

Disposable Spiral Mixers

Series 160AA Disposable Mixers for Quick Spray System



Designed for use with conventional meter/mix equipment or our two-component cartridge systems.

Nordson EFD's Series 160AA Quick Spray is a low-pressure air-assisted spray system for two-component coatings.

This disposable static mixer is designed for use with conventional meter/mix equipment or with Nordson EFD's two-component cartridge system. The reactive coating is mixed within the disposable static mixer. At the mixer outlet, air is introduced which atomizes the liquid stream. The degree of atomization can be adjusted by regulating the airflow rate. Since the reactive coating is contained completely within the mixer, cleanup is minimal.

For use with:

- u-TAH Universal Cartridges
- 380mL Coaxial Cartridges
- 200–1500mL Side x Side Cartridges

SERIES 160AA QUICK SPRAY SYSTEMS

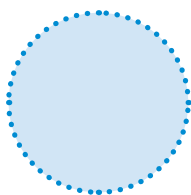
Element Diameter 0.366 / 9.30 (in/mm)

Part #	# Mixing Elements	Housing Length (in/cm)	Housing Inlet	Housing Outlet	Element / Housing
7700846	24	7.51 / 19.08	Bell*	Tapered	Acetal / PP
7700920	24	9.89 / 25.12	Bell*	Tapered	Acetal / PP

*Important: For any bell housing inlet mixer, order retaining nut: #7702595 for 0.189-0.366" ID; or #7702598 for 0.5" ID

Round Spray Pattern

The round air cap produces a full cone pattern, which is completely filled with spray drops. It is used on irregular surfaces, such as truck bed interiors.



EFD

For Nordson EFD sales and service in over 40 countries, contact Nordson EFD or go to www.nordsonefd.com.

Global

800-556-3484; +1-401-431-7000
info@nordsonefd.com

Europe

00800 7001 7001
infoefd.europe@nordsonefd.com

Asia

China: +86 (21) 3866 9006; china@nordsonefd.com
India: +91 80 4021 3600; india@nordsonefd.com
Japan: +81 03 5762 2760; japan@nordsonefd.com
Korea: +82-31-736-8321; korea@nordsonefd.com
SEAsia: +65 6796 9522; sin-mal@nordsonefd.com



more info