

# Spectra™ 30

## Control System

The next generation in pattern control technology – simple, accurate, reliable.

### Benefits

- Simple, visual Optix™ pattern programming interface minimizes operator training.
- Detailed diagnostics, advanced circuit protection, built-in self-test and on-screen troubleshooting tips help keep your line up and running.
- Fast and flexible installation and an automatic setup wizard get your system up and running quickly.
- System security is provided by password protection and system backups through the front-mounted USB port.

The innovative Spectra 30 control system reduces system complexity and downtime while improving production efficiency and product quality. Available as either a time- or a distance-based controller, Spectra 30 systems use Nordson's Optix graphical touch-screen interface to reduce the need for operator training.

A unique slide-on bracket with a flexible VESA standard mounting interface makes installation quick and easy, while a setup wizard guides technicians step-by-step through the setup process.

For integration into an electrical cabinet, the Spectra 30 control system is also available in a remote display version. In this version the touch screen is mounted separately from the controller board. Interconnecting cables are provided.

On-screen visual pattern programming allows operators to “see” the adhesive pattern prior to application, while complete system status is displayed in real-time right on the home screen. Your Spectra control system will display only the components installed on your line to minimize potential operator confusion.



Minimize product changeover by taking advantage of the 50-recipe memory storage capacity. Pattern flexibility supports a wide variety of applications, with up to four (4) trigger inputs, four (4) pattern channel outputs, 24 beads per channel and an array of pattern types including: dotted, EcoBead™ (stitch), random length and mirrored.

The built-in USB port provides a convenient method of backing up system settings for safe storage. Also use a flash drive to quickly and easily upgrade the software with new features as new releases become available.

Your Spectra 30 system has the ability to expand as your needs expand. Convert a time-based system to a distance-based system when variable line speeds become a requirement. Add other features like pressure run-up and remote recipe recall whenever they are needed without any hardware changes.



**Specifications**

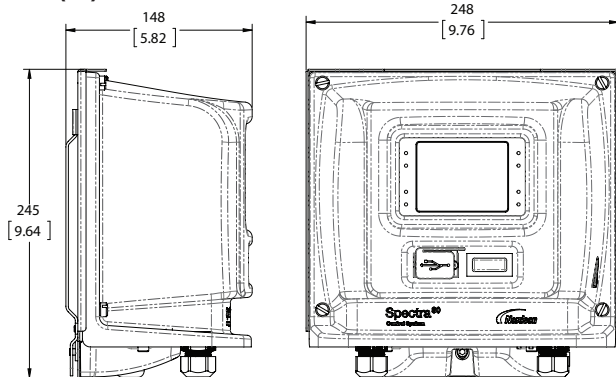
<b>Standard System Configurations</b>	Time Mode, standard (no license required) Encoder/Distance Mode, with encoder license Expanded I/O Option, with 2 pressure run-up outputs & remote program recall licenses Remote Display with encoder, 2 run-up outputs and remote program recall licenses
<b>Independent Pattern Channels</b>	4 channels, 24 beads per channel
<b>Independent Trigger Inputs</b>	4 independently assignable (NPN, PNP or line driver)
<b>Maximum Line Speed</b>	300 m/min (985 ft/min)
<b>Pattern Resolution/Accuracy</b>	1 mm or 0.1 inch
<b>Pattern Types</b>	Normal, dotted, EcoBead stitch, random length, mirror
<b>Encoders</b>	1 (quadrature or pulse, 24 VDC, 250 mA max.)
<b>Pressure Run-up Outputs</b>	2 (4-20 mA and 0-10 VDC)
<b>Digital Input/Outputs</b>	Ready & Alert Outputs (24 VDC) Fault Output (SPDT contact, 240 VAC, 2A max.) System Disable Input Remote Recipe Recall (5 inputs select one of 31 recipes)
<b>Recipe Memory</b>	Up to 50 recipes
<b>Input Voltage</b>	100-240 VAC 1 Phase 50/60Hz, 1.6 Amp Maximum
<b>Ambient Temperature Range<sup>1</sup></b>	0 to 40°C (0 to 104°F)
<b>Enclosure Rating</b>	IP44 <sup>2</sup>

<sup>1</sup>0-50°C (0-122°F) with optional fan kit

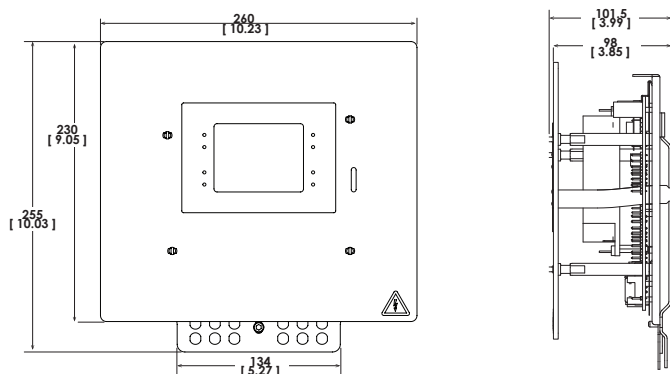
<sup>2</sup>IP54 with optional sealing kit

**Dimensions**

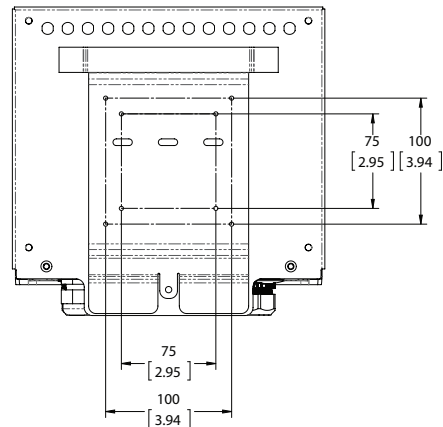
mm (in.)



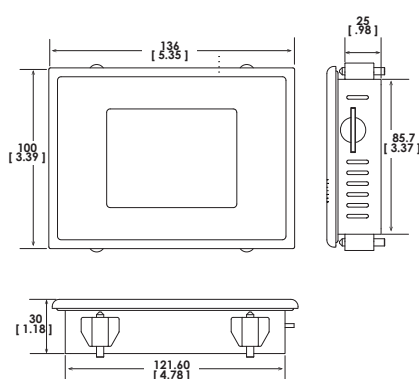
**Remote Display Version**



**Mounting Plate**



**Remote Display Mounting**



**For more information, speak with your Nordson representative or contact your Nordson regional office.**

**United States**

Duluth, Georgia  
(800)234-0506 **Phone**  
(866) 667-3329 **Fax**

**Canada**

Markham, Ontario  
(800) 463-3200 **Phone**  
(905) 475-8821 **Fax**

**Europe**

Erkrath, Germany  
(49) 211-9205-0 **Phone**  
(49) 211-254658 **Fax**

**Japan**

Tokyo, Japan  
(81) 3-5762-2700 **Phone**  
(81) 3-5762-2701 **Fax**

**Asia/Australia/  
Latin America**

Amherst, Ohio  
(440) 985-4797 **Phone**  
(440) 985-1096 **Fax**

Find us on:



PKL-14-5854  
Reissued 4/16  
© 2016 Nordson Corporation  
All Rights Reserved.  
Printed in U.S.A.  
Nordson reserves the right to make design changes between printings.

