

Tips and Tricks Series: Hidden Time Savers

Application Note

Did you know?

Paragon™ is a feature-rich program for bond testing. There are a few features you may have overlooked which can save you time and money. You will find our attention to detail from years of experience in the field means small tips and tricks could be valuable to your bondtest operators. To improve operation and streamline procedures we've highlighted just a few settings that can optimize your throughput.

1 Barcode scanning is integrated into Paragon

Data entry is one of those processes which detracts from the fun of bond testing: the science of breaking things every day. The data entry involved in preparing any test needs to be as fast as possible to maximize testing time. Hence, we have full barcode scanner integration to autofill these values rapidly for the all-important data tracking.



Barcode scanner with keyboard input to enter in your product ID.

2 The bondtester replaces your table-top microscopes

Considering the workflow of a production line, the training, time & cost spent using another microscope is eliminated as there is no need to take the part off our machine. State-of-the-art camera systems with Paragon make imaging simple and fast. The keypad can be customized with 'move to tool' and 'move to camera' functions. This allows switching between a test point and the microscope effortlessly. These commanded moves are faster and more precise than the user could ever achieve. It has autofocus, composite stacked imaging (CSI), drawing and measurement features.

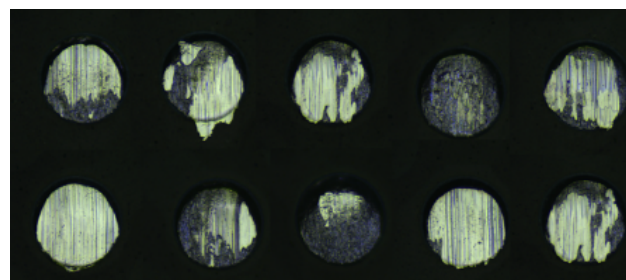


Image capture solder ball shear failure examples taken using Paragon.

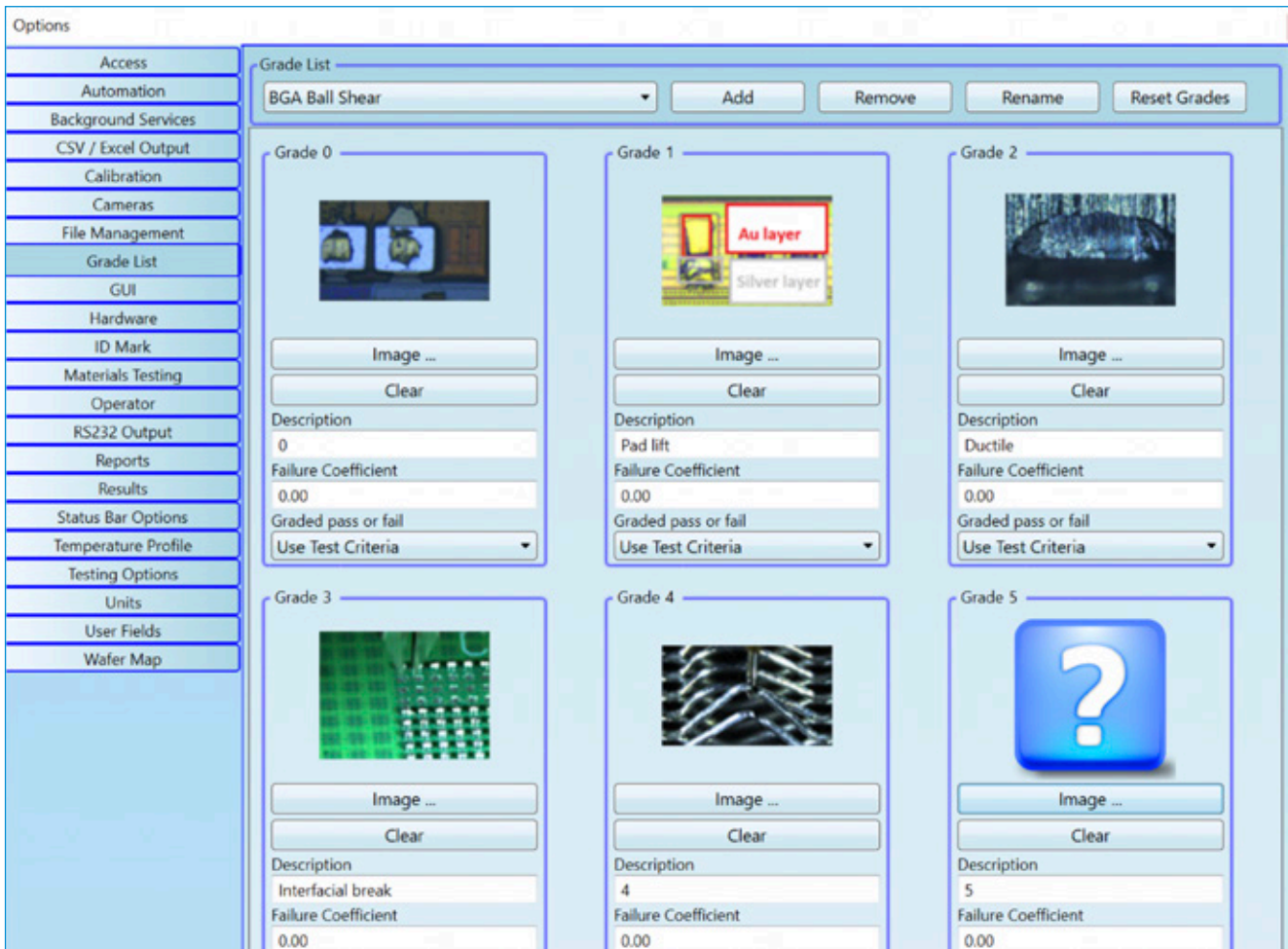


Tips and Tricks Series: Hidden Time Savers

Application Note

3 You can use real microscope images for your grade lists

In the Setup/Options menu under 'Grade List' you can modify your profiles for any number of test types. To make it easier for your operators to spot those tricky grades or rarer failure modes, you can use a real image of the failure in the grade list. You will end up with a series of easy to spot tiles. Simply click on the 'Image ...' button and upload your custom image in any standard image format.



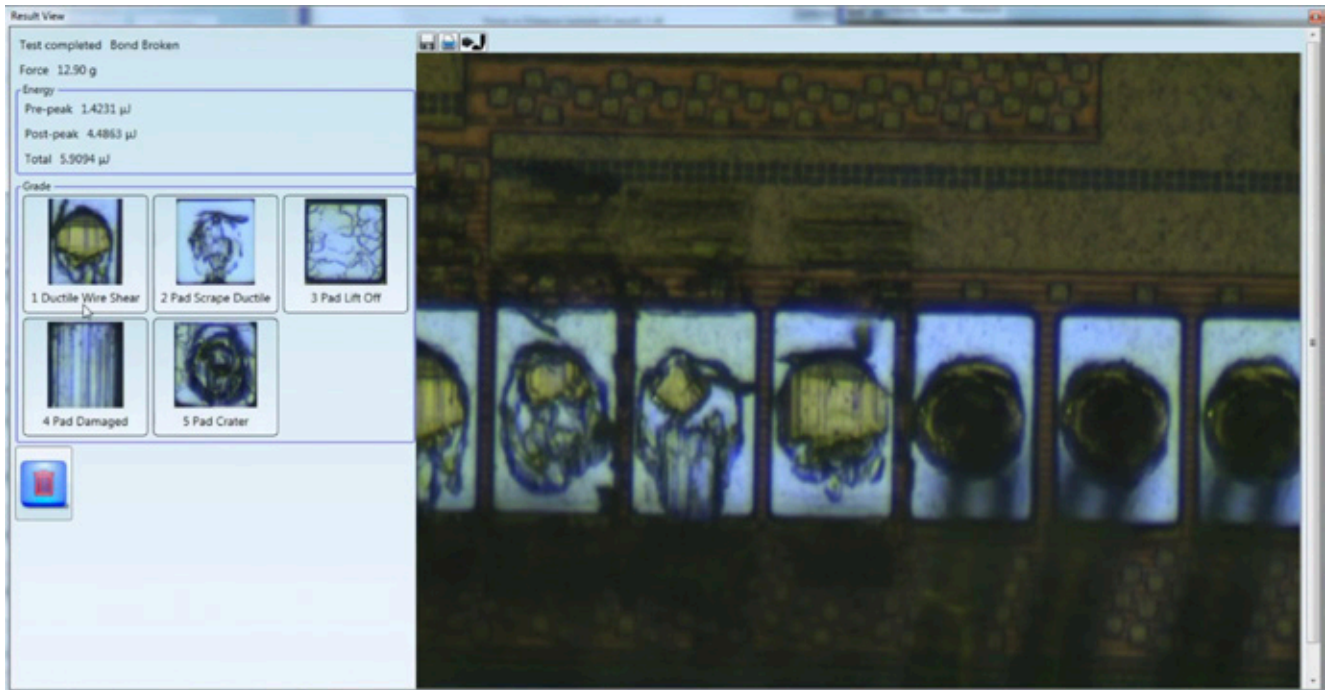
Ball shear grade list with a selection of custom images uploaded for grading.

Tips and Tricks Series: Hidden Time Savers

Application Note

4 Never misclassify a grade again with 'Results View'

The most-overlooked feature is the 'Results View' which can be configured to appear after each test. Custom microscope images tiled in a convenient panel are perfect for touch screens. The side-by-side view of the real image and examples is the real advantage for fast identification of failure modes. This visual method makes the grading process significantly faster and user friendly.



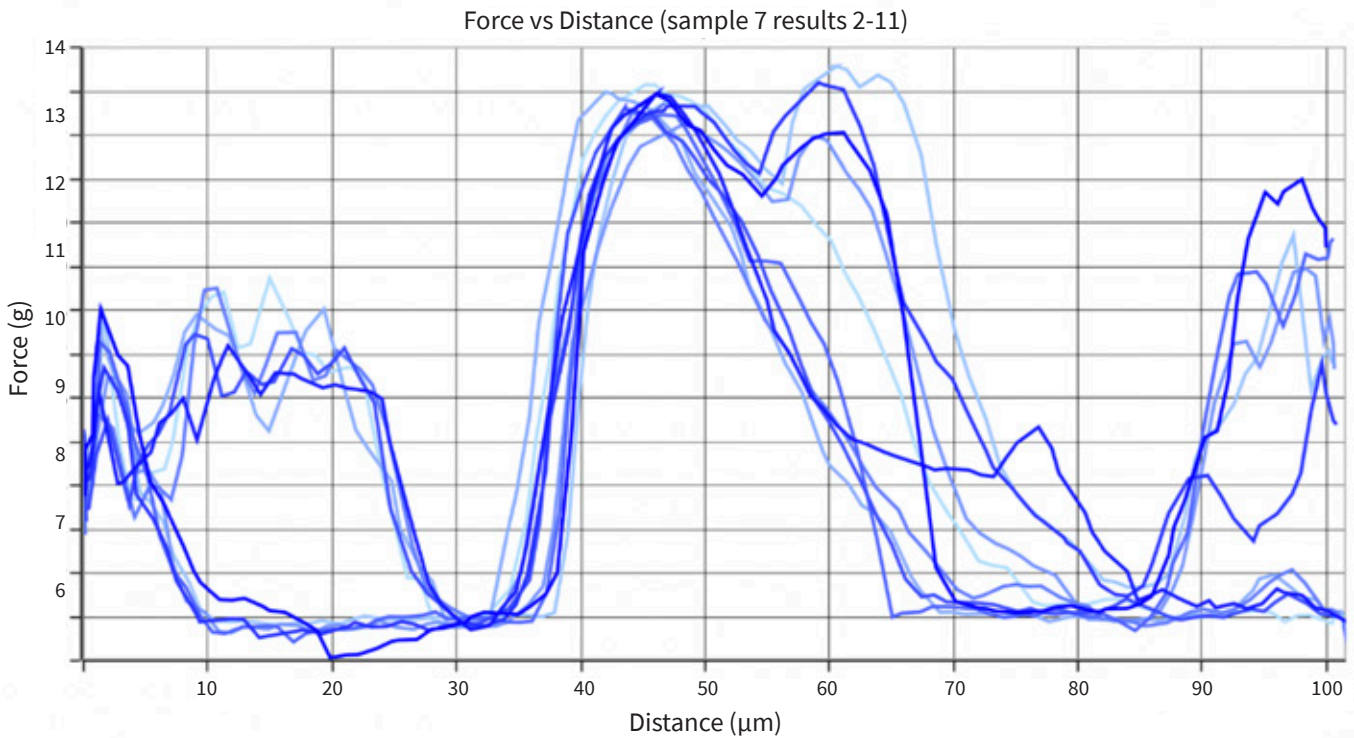
The result popup window shows the peak force & energy values alongside the captured image ready for quick keypad or touchscreen grading.

Tips and Tricks Series: Hidden Time Savers

Application Note

5 Smart Passivation does all the hard work for you

Our tests are becoming more intelligent as we evolve the software, the latest SMART passivation shear feature allows positioning the tool tip behind the bond, pressing the test key and sitting back to watch. The system automatically finds the device, moves to the camera position for inspection, and pauses to offer up the results to the user. An operator's hands do not need to leave the keypads saving both time and effort. Letting the machine do all the work makes graph profiles become even-more consistent and reliable. Try automating the process using the powerful features of Paragon software.

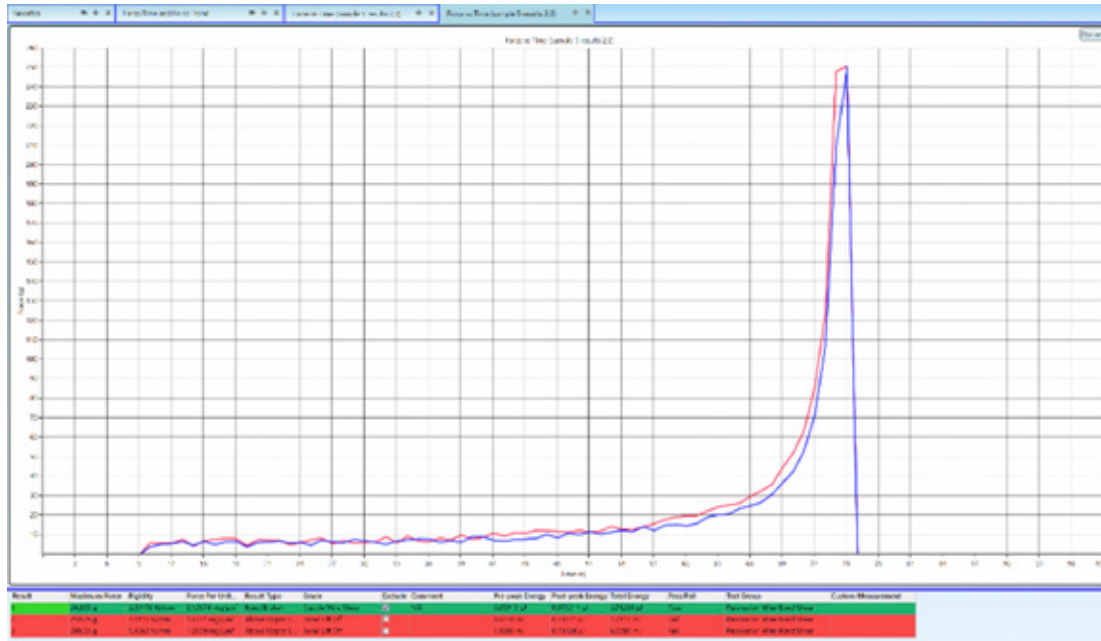


The notoriously messy passivation testing days are gone as you can see the SMART passivation shear graph profiles are aligned ready for analysis & export to your SPC.

Tips and Tricks Series: Hidden Time Savers

Application Note

Don't forget that both the graph profile and results grid can be colored to attract immediate attention to out-of-spec or failed tests.



A colorful results grid and graph profile for quicker analysis on-the-fly.

We would like your feedback

Paragon is here to enhance the user experience of the Nordson Bondtester. Smoothing the test operation for your users will streamline your production testing. Paragon is here to improve your production workflow, if there's a feature you think we haven't thought of and you'd like us to improve please get in touch.

For more information, speak with your Nordson representative or contact your Nordson regional office

Nordson Test & Inspection Europe, SEA, Africa

ti-sales-eu@nordson.com

Nordson Test & Inspection Americas

ti-sales-us@nordson.com

Nordson Test & Inspection China

ti-sales-cn@nordson.com

Nordson Test & Inspection Japan

ti-sales-jp@nordson.com

Nordson Test & Inspection Singapore

ti-sales-eu@nordson.com

Nordson Test & Inspection Taiwan

ti-sales-tw@nordson.com

Nordson Test & Inspection Korea

ti-sales-korea@nordson.com