

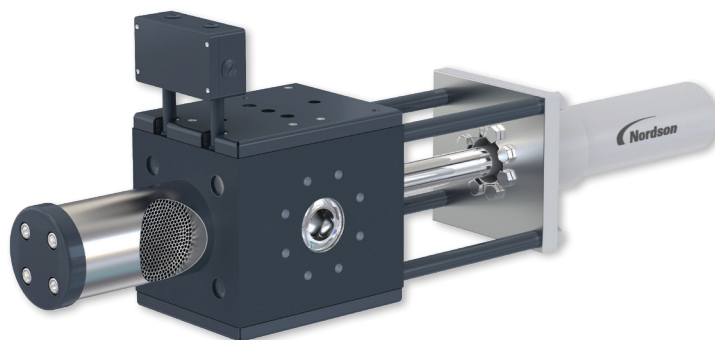
BKG[®] NorCon[™] D-SWE

Single Piston Screen Changer for Discontinuous Operation

- Normal operation:** 1 screen cavity (100%) in the process
- Backflush:** Not applicable
- Screen change:** During a screen change, a screen cavity is not in position to continue operating the machine

Applications

Suitable for all polyolefins and a variety of other temperature stable polymers. This system can be used for protection filtration, batch processes, compounding, and masterbatches, as well as for quality filtration of virgin materials.



Benefits

- Easy adjustment of the hydraulic device via the hand control valves
- Quick and easy cleaning allows for rapid material and color changes

Features

- The melt flow is temporarily interrupted during the screen change
- Special designs (e.g. screw threading, starting position) possible

Technical Information

Machine Type/Size	D-SWE-30 – D-SWE-380
Screen Dimensions	Ø30 – Ø340 mm (1.18 – 13.39 in)
Throughput	5 – 7,000 kg/h (11.02 – 15,432 lb/hr)
Screen Area	7 – 908 cm ² (1.1 – 140.7 in ²)
Temperature	Up to 450°C (842°F)
Heating	Electric, Fluid, or Steam
Max. Operating Pressure	From size 30 to size 200: Max. 400 bar (5,802 psi) Size 250 and up: Max. 300 bar (4,351 psi)
Differential Pressure	Max. 150 bar (2,176 psi)

*These throughput values are only estimates. The actual rates are dependent upon the viscosity of the material, filtration fineness, application, and the contamination level of the material; therefore, the values may differ depending on the actual process parameters.

BKG[®] NorCon[™] D-SWE

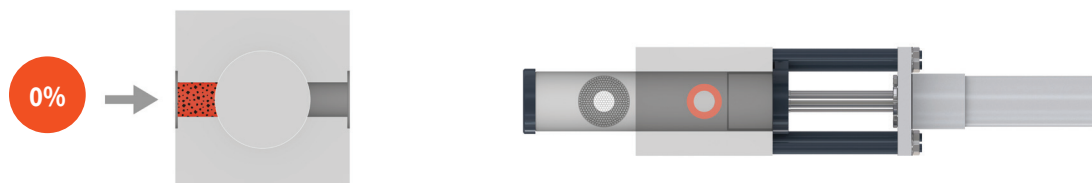
Single Piston Screen Changer for Discontinuous Operation

Normal operation



The heated steel housing allows for one screen bearing piston, which contains one screen cavity. The melt flow is led through the screen cavity.

Screen change



The exchange of the screens is triggered when reaching a chosen differential pressure (Δp). The screen bearing piston with the changeable filter element is moved out of the housing to allow the screen pack of the piston to be removed and replaced with a new filter element. A screen change is only possible during a system shutdown.

Nordson BKG GmbH
Hessenweg 3-5
48157 Münster / Germany
Phone +49.251.26501.0

USA
Phone +1.828.326.9888

China
Phone +86.21.5785.091.8

Japan
Phone +81.3.5762.2770



nordsonpolymerprocessing.com | info@nordsonpolymerprocessing.com

BKG is a trademark of Nordson Corporation,
registered in the United States and other countries.

© 2024 Nordson BKG GmbH
Printed in Germany
11/2024