

Powder  
Coating Systems



Improve production performance and extend equipment life

# TrueBlue™ Preventative Maintenance Service Plans

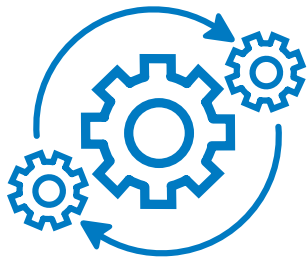
*Performance by design*





# Maximize productivity and protect your investment with a Nordson TrueBlue Service Plan

Nordson TrueBlue Service Plan improves equipment reliability and productivity, minimizing unexpected downtime for the production assurance you need.



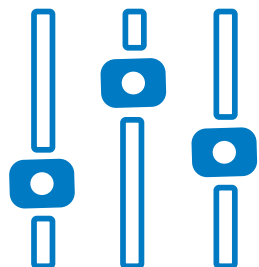
### Lower lifecycle cost

- Recommendations from an experienced and on-site Nordson engineer for timely replacement of wear items improves performance and reduces total cost of ownership
- Nordson parts will fit precisely, perform properly and preserve your system integrity and warranty



### Maximize uptime

- Consistently deliver production results – reducing unnecessary surprises, product quality loss, special adjustments or costly downtime
- Scheduled Service Plan routines ensure maintenance is carried out at the optimum production time for you, further maximizing uptime



### System optimization

- All mechanical, electrical and pneumatic functions and features are precisely tuned to your individual system
- Ensure best practice coating procedures and standard work are in place
- Receive a checklist inspection report for your records, to benchmark production and for ISO compliance



### Boost employee proficiency

- On-the-job employee training, by skilled Nordson staff, increases operator job satisfaction and morale reducing staff turnover
- Increased employee motivation and skills delivers efficiencies in the production process and prolongs equipment life
- Improve safety

## TrueBlue Service Plan for powder coating installations

Included in your plan :

### System health assessment

Powder spray guns	<input checked="" type="checkbox"/>	KV test, nozzle and electrode condition, diagnostics
Powder pumps	<input checked="" type="checkbox"/>	Venturi throats, pinch valves, o-rings, powder hoses
Automatic spray gun controller	<input checked="" type="checkbox"/>	Application, alarm screens and faults, configuration settings
Powder spray booth(s)	<input checked="" type="checkbox"/>	Pneumatics, booth opening air velocity, equipment summary, and general booth review
Gun movers	<input checked="" type="checkbox"/>	Automation, configuration, application
Equipment safety	<input checked="" type="checkbox"/>	Operating safety analysis, system grounding
Spare parts	Quoted	Inventory review and recommended spare parts list
Software	<input checked="" type="checkbox"/>	Software upgrade (3.4 or higher) and data-backup

### Training

On-the-job	<input checked="" type="checkbox"/>	Equipment operation, powder application and troubleshooting
Nordson University	Quoted	20% discount per class attendee - up to four attendees

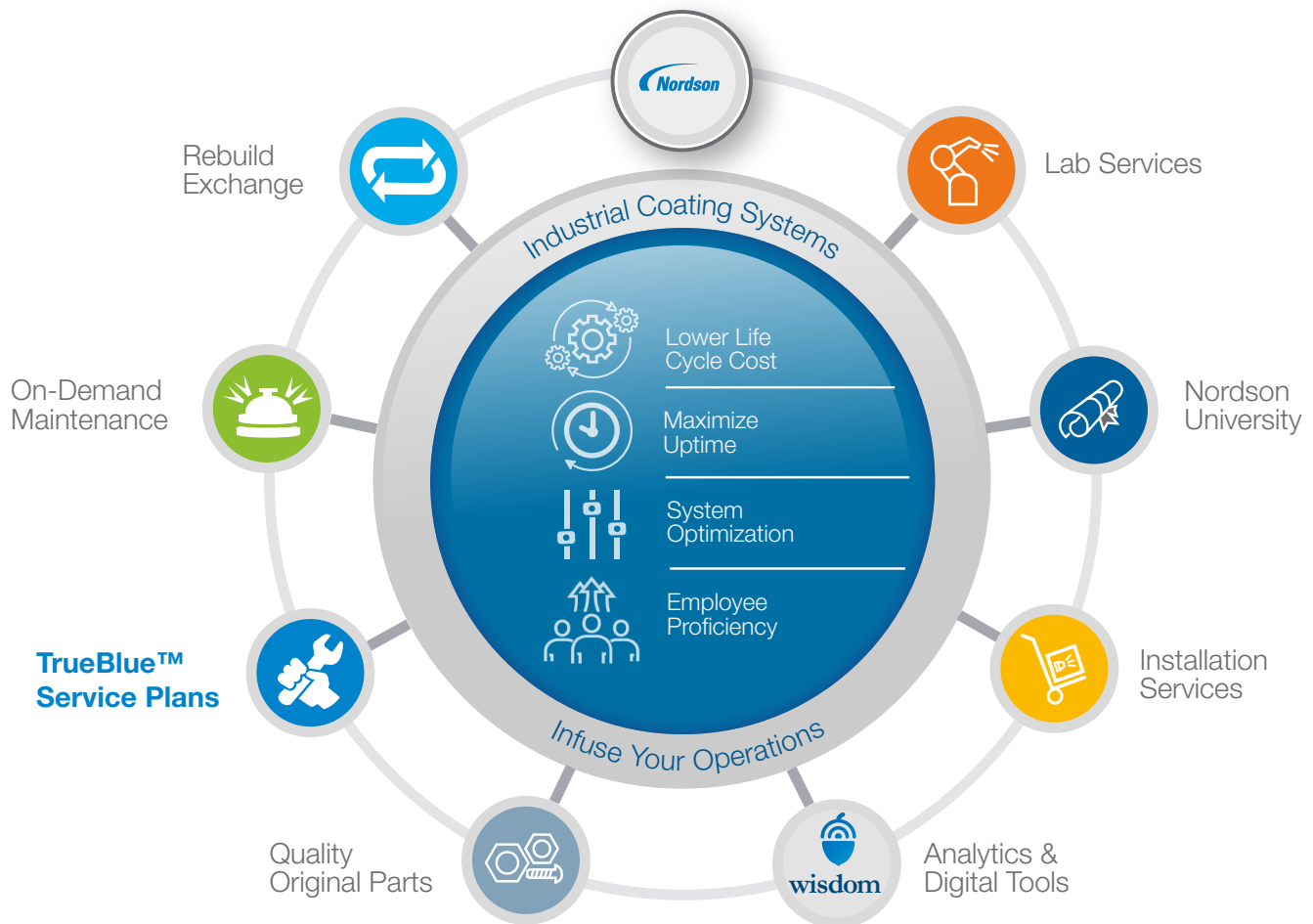
### Maintenance

Labor	Quoted	Repair or installation support
Preventative Maintenance (PM) Plan	<input checked="" type="checkbox"/>	Detailed maintenance plans provided

To discuss a Service Plan for your Nordson installation, contact your Nordson representative or email: [trueblue.powder@nordson.com](mailto:trueblue.powder@nordson.com)

## TrueBlue Preventative Maintenance Service Plans

Our full range of comprehensive customer support packages:



© 2019 Nordson Corporation | All Rights Reserved | PWL-19-6096 | Issued 09/19

Terms & Conditions apply, services may differ regionally

### Why choose Nordson

In highly competitive manufacturing markets, productivity is vital and performance is essential. That's why we apply both to everything we do, whether it's our products, expertise or outstanding customer service. We'll always be there to help maintain the new standards you've set, with expert service and support delivered through our teams working across the globe.

This unique Nordson approach helps you reach new levels of production, while working more accurately, efficiently and competitively than ever. Precisely why manufacturers who demand quality, can rely on Nordson.

### Nordson Industrial Coating Systems

100 Nordson Drive  
Amherst, OH, 44001  
USA

**Phone:** +1.440.985.4000  
**[www.nordson.com/ics](http://www.nordson.com/ics)**



[/Nordson\\_Coating](https://twitter.com/Nordson_Coating)



[/NordsonICS](https://www.youtube.com/NordsonICS)



[/company/nordson-industrial-coating-systems](https://www.linkedin.com/company/nordson-industrial-coating-systems)

Find your local Nordson office:

**[www.nordson.com/icslocations](http://www.nordson.com/icslocations)**

*Performance by design*

