

OptiStroke™ Generation 2

Needle Stroke Detection System

Reduce product waste and confirm hot melt adhesive dispensing performance.



The patented OptiStroke system verifies valve actuation and fatigue in demanding manufacturing operations that subject hot melt adhesive applicators to performance limits. Online process control monitors needle stroke in the applicator valve to assure correct adhesive placement in applications where product-yield loss is critical. OptiStroke generation 2 system is higher performing and includes Fieldbus interfaces instead of serial interfaces.

Features and Benefits

- **Optical needle stroke detection** verifies needle travel, detecting adhesive presence and accurate pattern placement.
- **Measurement of compensation times** tracks valve performance, alerting operators to no-stroke or slow-stroke action.
- **Automatic alarm** alerts operator or stops line during a stroke fault, preventing manufacture of scrap product.
- **High performance fieldbus interface** (Modbus TCP and EtherNet/IP) for parameter settings, analysis, diagnostic tracks and performance trends to identify potential valve fatigue before it may affect production.
- **Continuous sensor calibration and separation of electronic components** from high temperature applicators provide reliable stability.
- **Plug-and-play installation** maximizes uptime.
- **PC software in combination with Modbus TCP** provides parameter adjustment capability to meet production requirements in standalone mode.
- **Modular design** allows up to 32 channels and accepts multiple configurations with master/slave controls.
- **Compatibility** with many Nordson hot melt adhesive module designs reduces inventory requirements.

OptiStroke™ Generation 2 Needle Stroke Detection System

Specifications

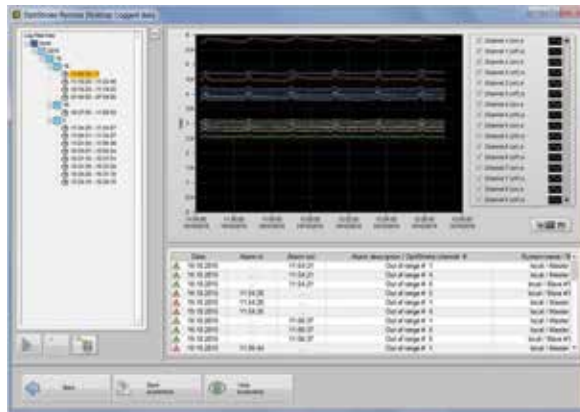
Compatible Equipment¹	Universal™ modules, Speed-Coat™ modules
Inputs²	Up to 32 channels for optical sensors Up to 32 channels for triggers
Outputs	Up to 32 channels for kickout alarms 1 collective fault relay
Enclosure Rating	IP54
Enclosure Dimensions	
Height	240 mm (9.45 in.)
Width	200 mm (7.87 in.)
Depth	90 mm (3.54 in.)
Electrical Service	24 VDC

¹Contact your Nordson representative for additional module compatibility.

²Based on one master control and seven slave units.



Continuous sensor calibration and light-to-dark reference avoid errors.



Online data logging with OptiStroke remote software.



For more information, speak with your Nordson representative or contact your Nordson regional office.

United States

Duluth, Georgia
(800) 683-2314 **Phone**
(866) 667-3329 **Fax**

Europe

Luneburg, Germany
(49) 4131-894-0 **Phone**
(49) 4131-894-149 **Fax**

Japan

Tokyo, Japan
(81) 3-5762-2700 **Phone**
(81) 3-5762-2701 **Fax**

Asia/Australia/

Latin America

Amherst, Ohio
(440) 985-4496 **Phone**
(440) 985-1096 **Fax**

Find us on:

