

# UltimusPlus Dispenser Network Connection Instructions

## Introduction

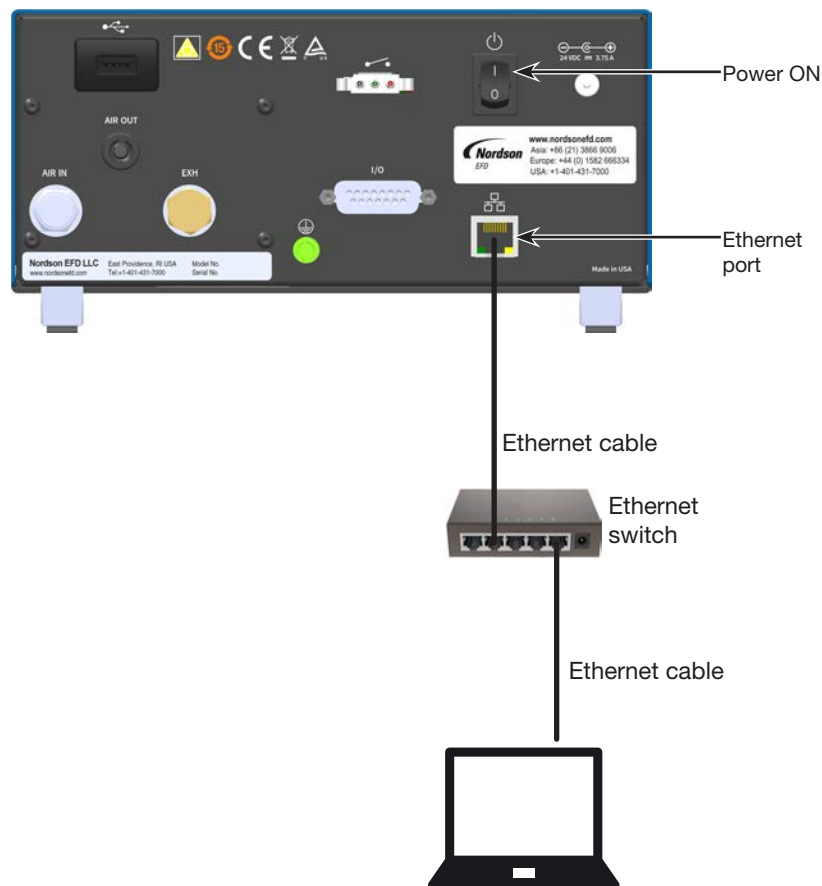
This document provides procedures for connecting the UltimusPlus™ fluid dispenser to a network and then sending commands to the dispenser, including commands to remotely switch dispense programs.

## Connecting the Dispenser to a Computer

1. Switch ON the dispenser power.
2. Using standard Ethernet cables and an Ethernet switch, connect a personal computer with a static IP address to the Ethernet port on the back of the UltimusPlus dispenser.

### NOTES:


- The Ethernet port allows only one socket connection.
  - The dispenser will continue to accept commands until the socket is closed.
  - Once the socket is closed, the dispenser must be rebooted for the connection to work again.
3. To set up your computer with the correct IP settings, continue to “Setting the IP Address of a Computer” on page 2.



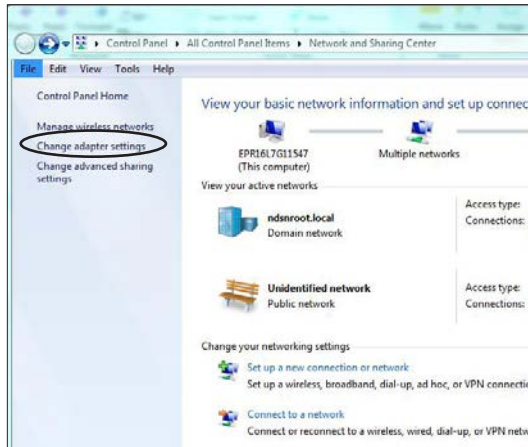
*Making the Ethernet connection between the UltimusPlus dispenser and a computer*

# Setting the IP Address of a Computer

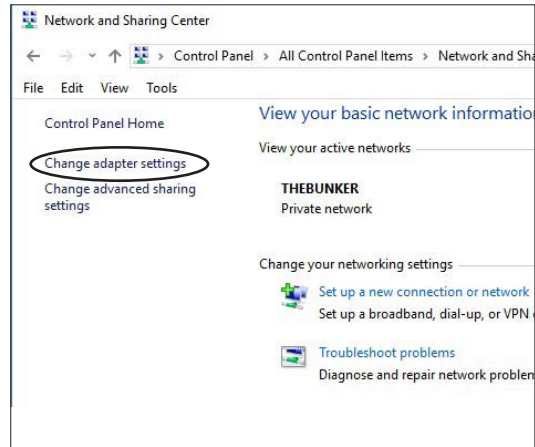
Each computer in a networked system must have a unique IP address. Follow this procedure to change the IP address of a computer.

**NOTE:** To change the IP address of the dispenser: Press Settings  > Ethernet, enter the desired IP address, then press Activate & Reboot.

1. On your computer, navigate to the “Network and Sharing Center.”
2. Click “Change Adapter Settings.”

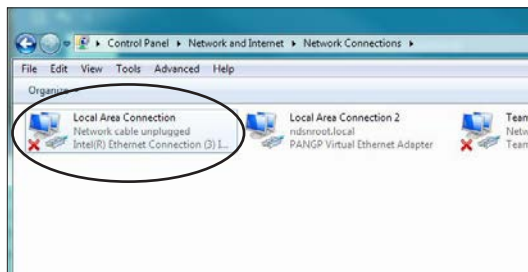


Windows® 7

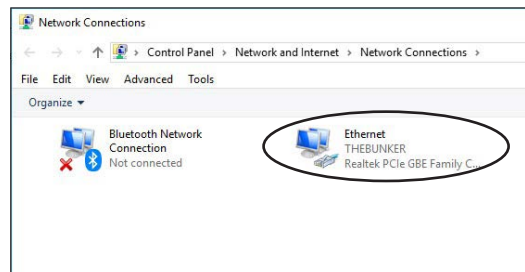


Windows 10

3. Select “Local Area Connection” (Windows 7) or “Ethernet” (Windows 10).

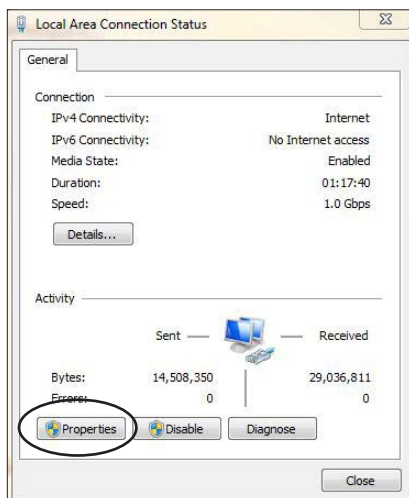


Windows 7

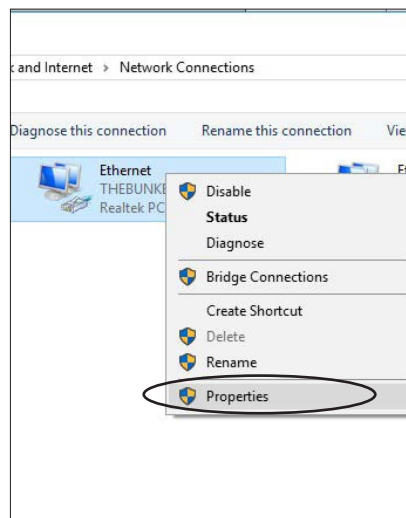


Windows 10

4. Double-click (Windows 7) or right-click (Windows 10) to select “Properties.”



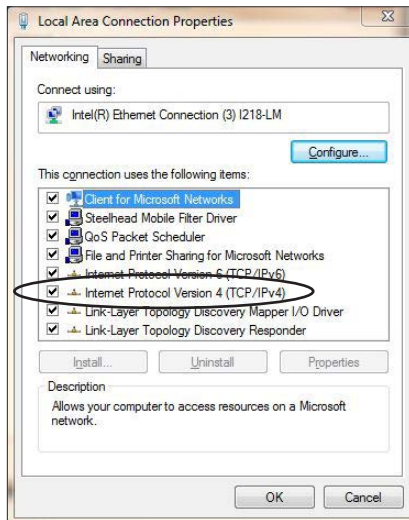
Windows 7



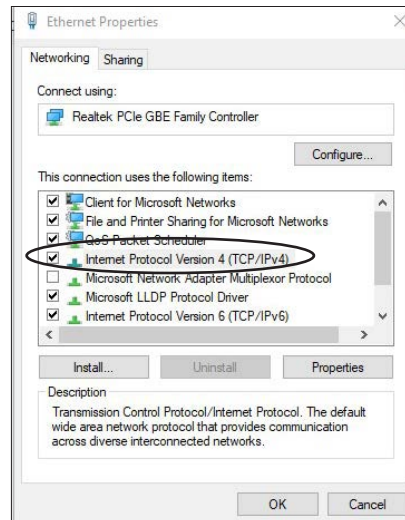
Windows 10

## Setting the IP Address of a Computer (continued)

5. Double-click “Internet Protocol Version 4 (TCP/IPv4).”



Windows 7

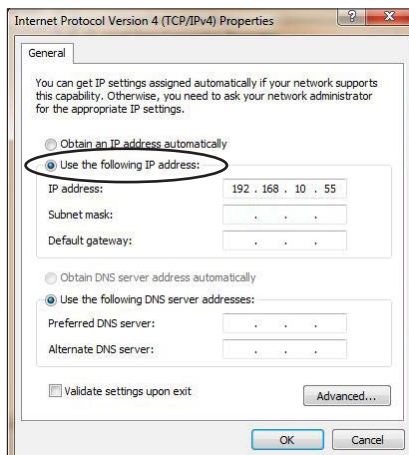


Windows 10

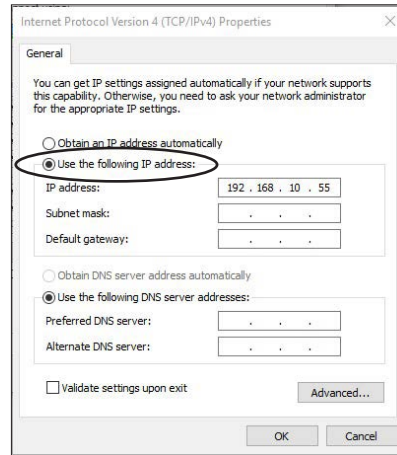
6. Click “Use the following IP address” and then enter the desired IP address.

**NOTE:** The digit range for each field is 1–255.

7. Click OK > OK to save the new IP address.



Windows 7



Windows 10

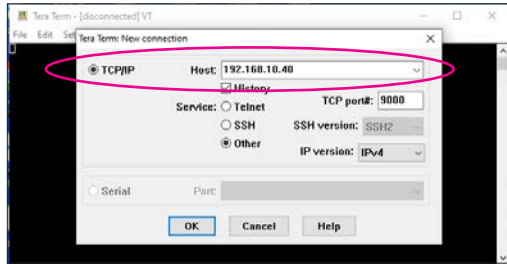
8. Click OK in the Local Area Connection properties window (Windows 7) or the Ethernet properties window (Windows 10).
9. Depending on the networking tool you will be using, continue to one of the following sections to set up the computer to send commands to the dispenser:
- “Using Tera Term to Communicate with the Dispenser” on page 4
  - “Using PuTTY to Communicate with the Dispenser” on page 5

## Using Tera Term to Communicate with the Dispenser

1. Once the computer is connected to the UltimusPlus dispenser, open a command prompt (or a terminal) and ping the IP address of the UltimusPlus dispenser. The default IP address of the dispenser is 192.168.10.40.

If the ping is successful, continue with the next steps to create a TCP connection to port 9000 of the dispenser. This section provides instructions for using the Tera Term networking tool.

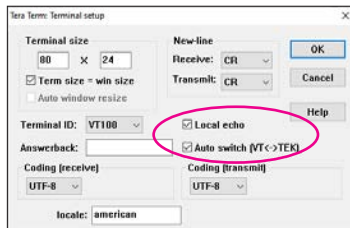
2. Open Tera Term and begin with the New Connection screen (shown below).
3. Select **TCP/IP** and, next for **Host**, enter the IP address of the UltimusPlus dispenser (**192.168.10.40**).



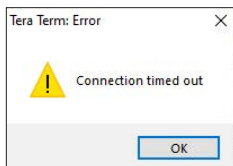
4. Click **Setup > Terminal**.



5. Select **Local echo** and **Auto switch [VT<->TEK]**.



- If the error shown below appears, you are not connected to the dispenser and there is a network issue. Contact your network administrator for assistance.



- If the command window shown below appears, then the TCP/IP connection is created and you can send commands to the UltimusPlus dispenser. Refer to "UltimusPlus Dispenser Remote Commands" on page 6 for the command list.

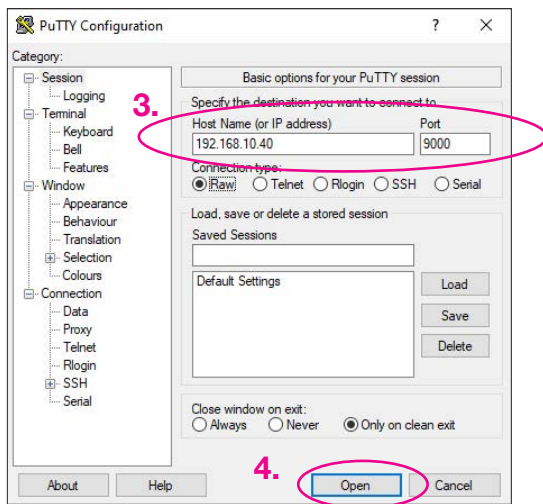


## Using PuTTY to Communicate with the Dispenser

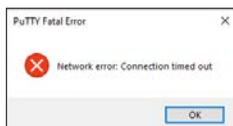
1. Once the computer is connected to the UltimusPlus dispenser, open a command prompt (or a terminal) and ping the IP address of the UltimusPlus dispenser. The default IP address of the dispenser is 192.168.10.40.

If the ping is successful, continue with the next steps to create a TCP connection to port 9000 of the dispenser. This section provides instructions for using the PuTTY networking tool.

2. Open PuTTY and begin with the PuTTY Configuration screen (shown below).
3. Ensure that the **Host Name** shows IP address (**192.168.10.40**) and **Port** (**9000**) of the UltimusPlus dispenser.
4. Click **Open**.



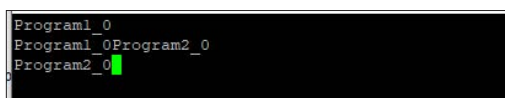
- If the error shown below appears, you are not on the same network or have entered the wrong IP address. Contact your network administrator for assistance.



- If the command window shown below appears, then the TCP/IP connection is created.



Now you can send commands to the UltimusPlus dispenser. For each command you enter, PuTTY responds with the same command, as shown below. Refer to "UltimusPlus Dispenser Remote Commands" on page 6 for the command list.



## UltimusPlus Dispenser Remote Commands

Command	Response	Result
Program1_0	Program1_0	Unit switches to program 1
Program2_0	Program2_0	Unit switches to program 2
Program3_0	Program3_0	Unit switches to program 3
Program4_0	Program4_0	Unit switches to program 4
Program5_0	Program5_0	Unit switches to program 5
Program6_0	Program6_0	Unit switches to program 6
Program7_0	Program7_0	Unit switches to program 7
Program8_0	Program8_0	Unit switches to program 8
Program9_0	Program9_0	Unit switches to program 9
Program10_0	Program10_0	Unit switches to program 10
Program11_0	Program11_0	Unit switches to program 11
Program12_0	Program12_0	Unit switches to program 12
Program13_0	Program13_0	Unit switches to program 13
Program14_0	Program14_0	Unit switches to program 14
Program15_0	Program15_0	Unit switches to program 15
Program16_0	Program16_0	Unit switches to program 16
DispenseTrigger_0	TriggeringDispense_0	If in timed mode, unit triggers a dispense



For Nordson EFD sales and service in over 40 countries, contact Nordson EFD or go to [www.nordsonefd.com](http://www.nordsonefd.com).

### Global

800-556-3484; +1-401-431-7000  
[info@nordsonefd.com](mailto:info@nordsonefd.com)

### Europe

00800 7001 7001  
[infoefd.europe@nordsonefd.com](mailto:infoefd.europe@nordsonefd.com)

### Asia

China: +86 (21) 3866 9006; [china@nordsonefd.com](mailto:china@nordsonefd.com)  
 India: +91 80 4021 3600; [india@nordsonefd.com](mailto:india@nordsonefd.com)  
 Japan: +81 03 5762 2760; [japan@nordsonefd.com](mailto:japan@nordsonefd.com)  
 Korea: +82-31-736-8321; [korea@nordsonefd.com](mailto:korea@nordsonefd.com)  
 SEAsia: +65 6796 9522; [sin-mal@nordsonefd.com](mailto:sin-mal@nordsonefd.com)