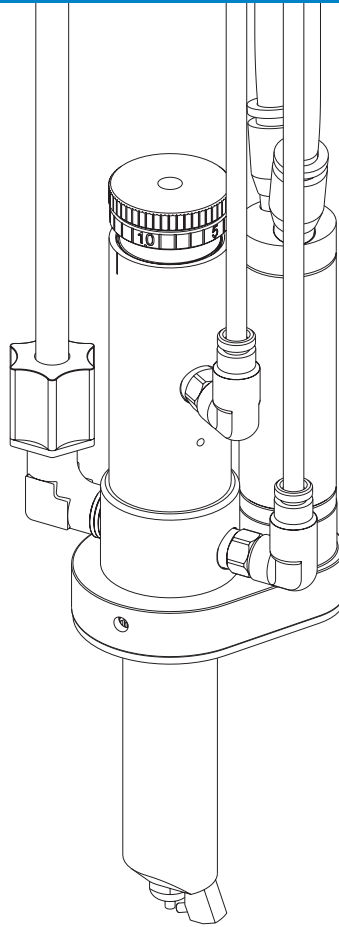


# 782RA Radial Spray Valve

## Maintenance & Parts Guide



**IMPORTANT!**  
Save this Sheet.

Forward to  
Maintenance or  
Tool Crib Supervisors

Electronic pdf files of Nordson EFD  
manuals are also available at  
[www.nordsonefd.com](http://www.nordsonefd.com)

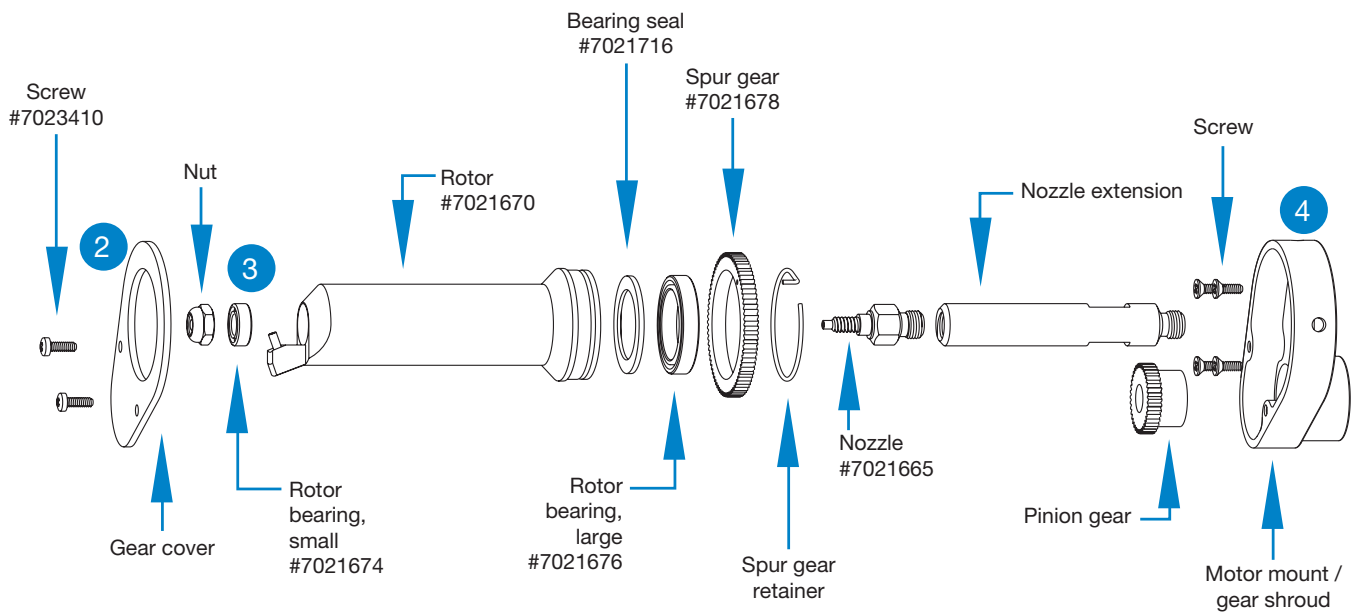
**Nordson**  
EFD

# Valve Disassembly and Reassembly Procedures

## Valve Maintenance

To thoroughly clean the fluid body and replace the needle packings:

1. Remove the needle stroke control knob and spring.
  2. Remove the gear cover.
  3. Remove the rotor retainer nut, then the rotor, nozzle, fittings, and motor from the fluid body.
  4. Remove the motor mount and motor assembly.
  5. Remove the fluid body from the air cylinder body. Remove the O-ring from the fluid body.
  6. Clean the fluid body, rotor and nozzle in appropriate solvent.
- NOTE:** Rotor bearings can be soaked in light oil for one hour to penetrate past the seals. Replace the bearings if the rotor does not rotate smoothly.
7. Use tool #7021552 to remove the needle packings from the fluid body.
  8. Remove any remaining packings and the spring from the needle.
- NOTE:** The lower cylinder needle O-ring (#7014686) is held in place by a flat retaining washer that also serves as the packing-spring seat. The washer may come out with the spring. Ensure that it is back in place before reinstalling the packing spring.
9. Clean the needle with a cloth dampened in solvent.
  10. Lubricate the needle with Nye Lubricant #865. Reinstall the needle packing spring and a new packing kit.
  11. Install a new O-ring (#7014686) on the fluid body.
  12. Reassemble the valve in reverse order.



# Valve Disassembly and Reassembly Procedures (continued)

## Replacing the Piston and Needle Assembly or the Piston O-Ring

13. Remove the needle stroke-control knob.
14. Remove the piston return spring and thrust washers.
15. Remove the snap ring.
16. With small pliers on the spring pilot, pull the piston and needle assembly out of the air cylinder. The piston and needle assembly is one unit and cannot be disassembled.
17. Clean the air cylinder body wall and lubricate it with Nye Lubricant #865.
18. Reassemble the valve in reverse order.

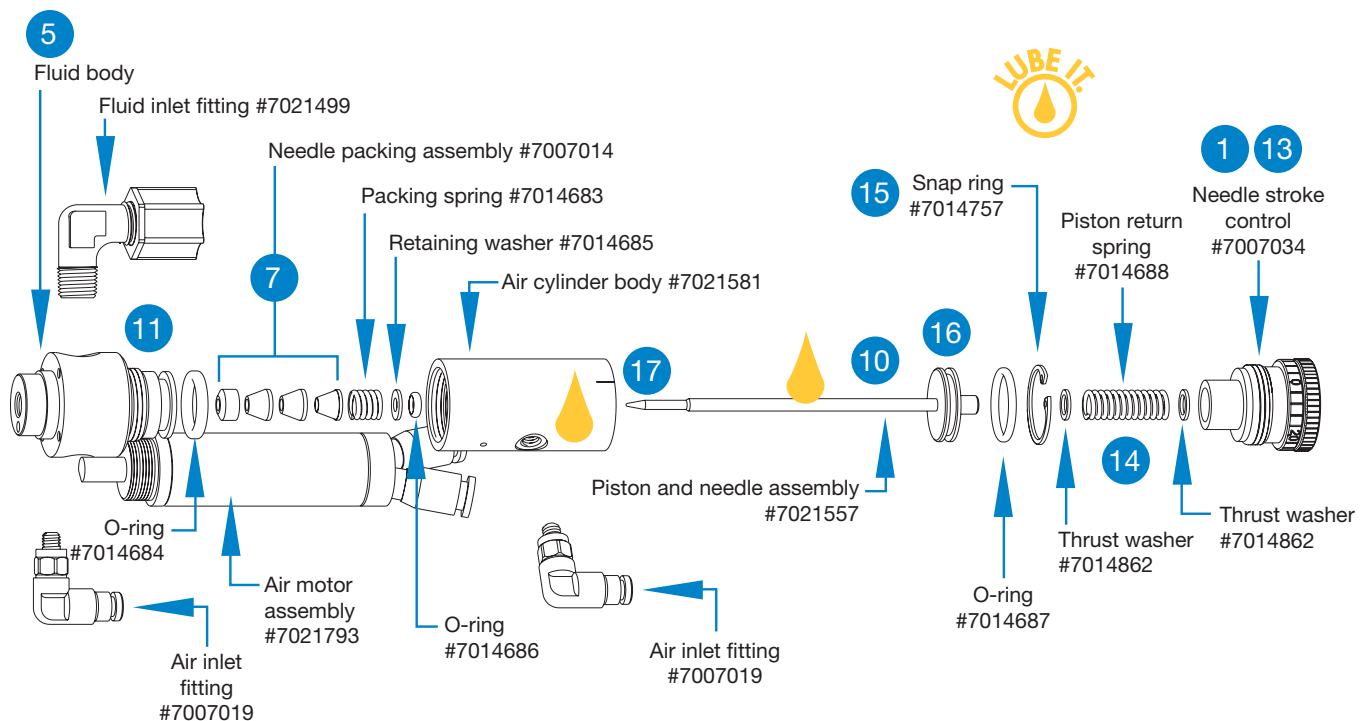
### General Maintenance Kit (#7021566)

Includes O-rings, needle-packing assembly and lubricant.

### Maintenance Tools:

6" adjustable wrench  
5/16" open-end wrench  
Wnap-ring pliers  
Packing extraction tool, #7021552

Part #	Description
7021649	782RA radial spray valve



# Troubleshooting Guide

## No fluid flow

- If the valve operating air pressure is too low, the valve will not open. Increase the air pressure to 4.8 bar (70 psi) minimum.
- The reservoir air pressure may not be high enough. Increase the pressure.
- The nozzle may be clogged. Clean the nozzle.
- The stroke adjustment control may be closed. If it is closed, open counterclockwise one turn.
- The control and the atomizing air lines may be reversed. Check for proper connection.

## Valve does not provide clean shut-off, leaving a buildup on the nozzle

- Atomizing air pressure may be too low. Increase the air pressure.
- Atomizing air delay setting may be too low. Increase the air delay setting.

## Fluid continuously drips from the nozzle after the valve shuts off

- A continuous drip can be caused by improper seating of the needle in the nozzle seat. Remove the nozzle, clean the needle and nozzle, and replace worn or damaged parts.
- If the fluid body has not been fully turned onto the air cylinder body during reassembly, the needle will not seat in the nozzle. Check the fluid body installation.
- Needle packings may be binding due to leakage, preventing the needle from fully closing. Disassemble the valve and replace the packings if there is evidence of leakage.

## Fluid flows from the nozzle but will not spray

- Atomizing air pressure may be too low. Increase the air pressure.
- If the fluid viscosity is too high, it will not atomize. Reduce the viscosity.
- Check atomizing hose connection "B" at the controller.



For Nordson EFD sales and service in over 40 countries, contact Nordson EFD or go to [www.nordsonefd.com](http://www.nordsonefd.com).

### Global

800-556-3484; +1-401-431-7000  
[info@nordsonefd.com](mailto:info@nordsonefd.com)

### Europe

00800 7001 7001  
[infoefd.europe@nordsonefd.com](mailto:infoefd.europe@nordsonefd.com)

### Asia

China: +86 (21) 3866 9006; [china@nordsonefd.com](mailto:china@nordsonefd.com)  
India: +91 80 4021 3600; [india@nordsonefd.com](mailto:india@nordsonefd.com)  
Japan: +81 03 5762 2760; [japan@nordsonefd.com](mailto:japan@nordsonefd.com)  
Korea: +82-31-736-8321; [korea@nordsonefd.com](mailto:korea@nordsonefd.com)  
SEAsia: +65 6796 9522; [sin-mal@nordsonefd.com](mailto:sin-mal@nordsonefd.com)

The Wave Design is a trademark of Nordson Corporation.  
©2024 Nordson Corporation 7026840 v031924