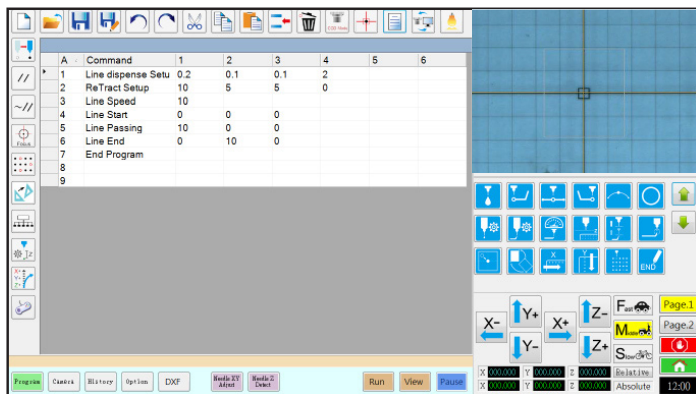


# EV Series Automated Dispensing Systems

Easy automation for precise fluid application with simple vision pencil camera



EV Series pencil camera vision makes programming patterns easier.



Vision-guided DispenseMotion software makes programming easy.



Pencil camera verifies product presence.

Nordson EFD's EV Series automated systems include simple vision for precise fluid dispensing using EFD syringe barrel and valve systems.

Specialized vision-guided DispenseMotion™ software and a simple pencil camera make EFD automated systems quick to set up and easy to program. True three-dimensional motion control allows easy programming of dots, lines, circles, arcs, and compound arcs.

Platforms range from 150 x 200 mm to 570 x 500 mm, making them an ideal solution for batching or critical dispensing applications.

The EV Series can work as a standalone system or as a key part of an automated solution and is easily integrated into in-line transfer systems, rotary tables, and pallet assembly lines.

## Features

- Simple camera and DispenseMotion software make setup and programming easy
- On-screen preview of the dispensing path facilitates programming
- Streamlined file import and conversion
- True three-dimensional motion control
- Wide range of work envelopes

## Benefits

- Faster cycle and batch times
- Easy integration into any manufacturing operation
- Reduced production, material, and ownership costs
- New manufacturing opportunities



more info

## Specifications

Item / Model	E2V	E3V	E4V	E5V	E6V
Part #	7360856	7360857	7360858	7360859	7362103
Part # Europe*	7361349	7361350	7361351	7361352	7362104
Number of axes	3 axes				
Maximum working area (X / Y / Z)	150 / 200 / 50 mm (6 / 8 / 2")	250 / 300 / 100 mm (10 / 12 / 4")	350 / 400 / 100 mm (14 / 16 / 4")	450 / 500 / 150 mm (18 / 20 / 6")	570 / 500 / 150 mm (22 / 20 / 6")
Workpiece payload	5.0 kg (11.0 lb)	10.0 kg (22.0 lb)	10.0 kg (22.0 lb)	10.0 kg (22.0 lb)	10.0 kg (22.0 lb)
Tool payload	1.5 kg (3.3 lb)	3.0 kg (6.6 lb)	3.0 kg (6.6 lb)	3.0 kg (6.6 lb)	3.0 kg (6.6 lb)
Weight	29.0 kg (63.9 lb)	47.5 kg (104.7 lb)	52.5 kg (115.7 lb)	55.0 kg (121.3 lb)	58.0 kg (127.9 lb)
Dimensions	481w x 510h x 432d mm (19w x 20h x 17d")	596w x 644h x 543d mm (23w x 25h x 21d")	696w x 644h x 638d mm (27w x 25h x 25d")	796w x 814h x 718d mm (31w x 32h x 28d")	913w x 812h x 718d mm (36w x 32h x 28d")
Maximum speed (XY / Z)**	500 / 250 mm/s (20 / 10"/s)	800 / 320 mm/s (31 / 13"/s)	800 / 320 mm/s (31 / 13"/s)	800 / 320 mm/s (31 / 13"/s)	800 / 320 mm/s (31 / 13"/s)
Drive system	3 phase micro-stepping motor				
Memory capacity	PC storage				
General purpose I/O	8 inputs / 8 outputs (16 / 16 optional)				
Input AC (to power supply)	100–240 VAC, ±10%, 50/60Hz, 20 Amp maximum, 230 W	100–240 VAC, ±10%, 50/60Hz, 20 Amp maximum, 350 W	100–240 VAC, ±10%, 50/60Hz, 20 Amp maximum, 350 W	100–240 VAC, ±10%, 50/60Hz, 20 Amp maximum, 350 W	100–240 VAC, ±10%, 50/60Hz, 20 Amp maximum, 350 W
Repeatability***	±0.008 mm				
Vision	Pencil camera				
DispenseMotion software	Included				
Tip detection	Optional				
Height detection	Optional				
Approvals	CE, UKCA, RoHS, WEEE, China RoHS				
Warranty	1 year, limited				

\* Complies with European safety regulations.

\*\* Actual travel speed depends on the dispensing path and workpiece / tool payloads.

\*\*\* Repeatability results may vary depending on method of measurement.

## PROPlus / PRO Series

EFD's PROPlus / PRO Series includes smart vision CCD camera and laser height sensing capabilities for a fully integrated dispensing solution.



## Free Process Evaluation

Contact Nordson EFD to configure an automated dispensing system that meets your specific needs.

- A complimentary process evaluation by experienced fluid dispensing experts
- Samples processed for customer evaluation and approval prior to purchase



EFD

For Nordson EFD sales and service in over 40 countries, contact Nordson EFD or go to [www.nordsonefd.com](http://www.nordsonefd.com).

### Global

800-556-3484; +1-401-431-7000  
[info@nordsonefd.com](mailto:info@nordsonefd.com)

### Europe

00800 7001 7001  
[infoefd.europe@nordsonefd.com](mailto:infoefd.europe@nordsonefd.com)

### Asia

China: +86 (21) 3866 9006; [china@nordsonefd.com](mailto:china@nordsonefd.com)  
India: +91 80 4021 3600; [india@nordsonefd.com](mailto:india@nordsonefd.com)  
Japan: +81 03 5762 2760; [japan@nordsonefd.com](mailto:japan@nordsonefd.com)  
Korea: +82-31-736-8321; [korea@nordsonefd.com](mailto:korea@nordsonefd.com)  
SEAsia: +65 6796 9522; [sin-mal@nordsonefd.com](mailto:sin-mal@nordsonefd.com)

©2024 Nordson Corporation 110524