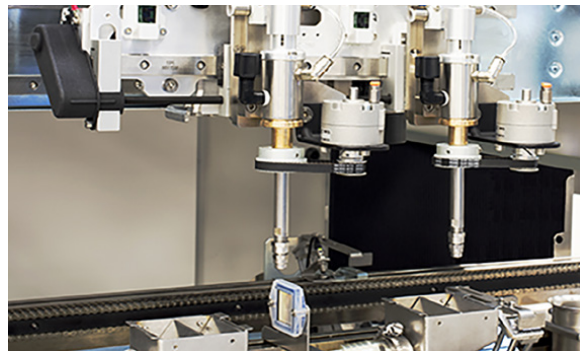


ASYMTEK Dual-Simultaneous Bracket

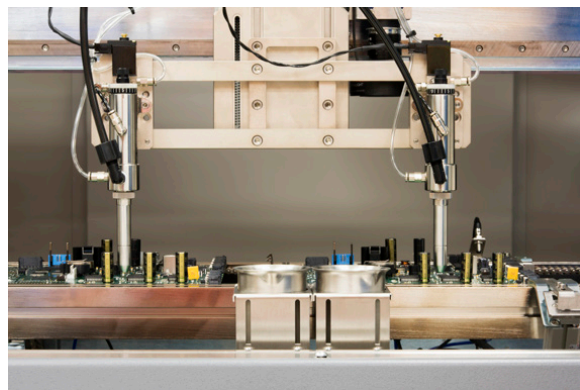
Improve Throughput by Running Two Identical Valves

Features and Options

- Delivers up to 50% faster processing without compromising precision
- Ideal for multi-up, panelized, or patterned parts with consistent spacing
- **Select Coat® SL-1040 Motorized, Programmable Pitch Bracket (Standard)**—Automatically adjusts valve positioning through EasyCoat® 6 software, minimizing setup time and enabling rapid changeovers for high-mix production
- **Select Coat® SL-940 Manual Bracket (Standard)**—Quickly adjust valve pitch with simple, reliable set-screw controls for consistent, repeatable performance



Select Coat SL-1040 — Motorized, Programmable Pitch Bracket (Standard)



Select Coat SL-940 — Manual Bracket (Standard)

Double Throughput. Cut Process Time in Half.

The ASYMTEK Dual-Simultaneous Bracket transforms conformal coating productivity by enabling two identical valves to operate simultaneously—delivering up to 50% faster processing without compromising precision.

Designed for high-efficiency manufacturing, this solution maximizes system utilization while maintaining the accuracy and repeatability required for today's demanding applications.

Switch seamlessly between dual- and single-valve operation directly within EasyCoat 6 software—giving you the flexibility to adapt instantly to changing production needs.

The Dual-Simultaneous Bracket supports all ASYMTEK conformal coating valves and seamlessly accommodates optional Fifth-Axis Tilt and Four-Position Tilt accessories, enabling precise coating of complex PCB geometries.

ASYMTEK Dual-Simultaneous Bracket

Select Coat SL-940 – Manual Bracket (Standard)

Dual Valve	Minimum Pitch	Maximum Pitch
SC-280 Select Coat® Film Coater (non-circulating and circulating)	96 mm (3.8 in.)	227 mm (8.93 in.)
SC-300 Multi-Mode	60 mm (2.36 in.)	255 mm (10.03 in.)
SC-350 Select Spray	60 mm (2.36 in.)	255 mm (10.03 in.)
SC-400 PreciseCoat® Jet	94 mm (3.7 in.)	216 mm (8.5 in.)
SC-450 PreciseCoat® Jet	46 mm (1.82 in.)	255 mm (10.03 in.)
DV-01	64 mm (2.52 in.)	255 mm (10.03 in.)
DV-05	51 mm (2.01 in.)	
DV-09	64 mm (2.52 in.)	

For more information, visit our website to find your local regional office or representative.

We have several global locations to serve you.

North America
Asia Pacific
EMEA

www.nordson.com/electronics
info-electronics@nordson.com

Select Coat SL-1040 – Motorized, Programmable Pitch Bracket (Standard)

Motion System

Speed	30 mm/s (1.18 in./s)
Positional resolution	0.15 mm (0.006 in.)
Positional repeatability (with 200 mm pitch)	X-Axis: 0.15 mm (0.006 in.) @ 3 σ Y-Axis: 0.60 mm (0.024 in.) @ 3 σ Z-Axis: 0.60 mm (0.024 in.) @ 3 σ

Pitch Requirements

Dual Valve	Minimum Pitch	Maximum Pitch
SC-280 Select Coat® Film Coater (non-circulating and circulating)	115 mm (4.53 in.)	200 mm (7.87 in.)
SC-300 Multi-Mode	60 mm (2.36 in.)	
SC-350 Select Spray		
SC-400 PreciseCoat® Jet		
SC-450 PreciseCoat® Jet		
DV-01		
DV-05		
DV-09		

Note: The SC-300 Multi-Mode and SC-350 Select Spray valves are part of the ASYMTEK Select Coat® Applicator Series.

North America Headquarters
2762 Loker Avenue West
Carlsbad, CA 92010-6603, USA

+1.760.431.1919

June 2026

 **Nordson** Electronics Solutions