

ASYMTEK Fifth-Axis Tilt Accessory

Expanded Coating Access and Precision for Complex PCB Assemblies

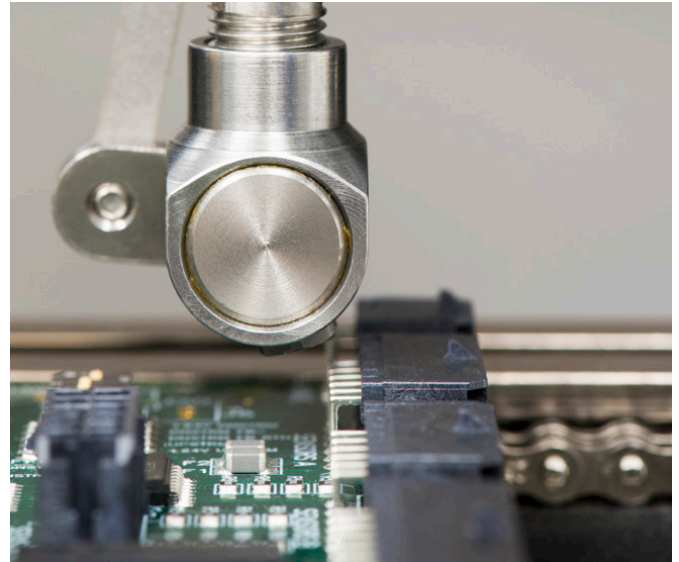
Features and Benefits

- Provides five-axis nozzle motion to reach hard-to-access areas and vertical surfaces
- Improves coating accuracy under components and inside narrow openings
- Enables fan and thin-line coating patterns at a 30° angle for precise material placement
- Easily program rotate and tilt settings within ASYMTEK EasyCoat® 6 software

Designed to expand the capabilities of the ASYMTEK SC-280 Select Coat® Film Coater, this advanced accessory adds tilt and rotation to the coating nozzle—opening up new possibilities for precision, coverage, and process flexibility.

The Fifth-Axis Tilt Accessory provides advanced tilt-and-rotate capability allowing the nozzle to be precisely positioned to coat challenging areas such as vertical surfaces, underneath components, and tight geometries that are difficult to access with conventional motion.

The nozzle can be tilted from 0° to 30° and rotated into four fixed positions—0°, 90°, 180°, and 270°—allowing access to all four sides of a component. When oriented perpendicular to the board, the valve can deliver a controlled fan pattern at a 30° angle. With the nozzle mounted parallel to the board, the valve applies thin, accurate coating lines into narrow openings with high repeatability.



Powered by dual pneumatic motors, the tilt and rotate accessory delivers smooth, fast, and quiet operation, with variable rotate speed controlled through flow controls.

All tilt and rotation parameters are easily set and adjusted within EasyCoat 6 software, making it simple to integrate the Fifth-Axis Tilt Accessory into existing programs or fine-tune new applications.

ASYMTEK Fifth-Axis Tilt Accessory

Specifications

Tilt Positions	0°, 30°
Rotate Positions	0°, 90°, 180°, 270°
Rotate Speed	~0.3 sec.
Control	EasyCoat 6 software
Weight	0.9 Kg (2.0 lbs.)
Nozzle End Footprint	27 x 23 mm (1.1 x 0.9 in.)

For more information, visit our website to find your local regional office or representative.

We have several global locations to serve you.

[North America](#)
[Asia Pacific](#)
[EMEA](#)

www.nordson.com/electronics
info-electronics@nordson.com

Mode	Configuration	X-Axis	Y-Axis
Standard	—	500 mm (19.7 inches)	440 mm (17.3 inches)
With tilt mode engaged (Approaching from the outside into each of the four sides of the board) No Camera Allowance	Without a nozzle extension (-2 mm per side)	496 mm (19.5 inches)	436 mm (17.2 inches)
	With a 13 mm nozzle extension (-6.5 mm per side)	487 mm (19.2 inches)	423 mm (16.7 inches)
	With a 25 mm nozzle extension (-12.5 mm per side)	475 mm (18.7 inches)	411 mm (16.2 inches)

Valves

- SC-280 Select Coat® Film Coater — circulating and non-circulating