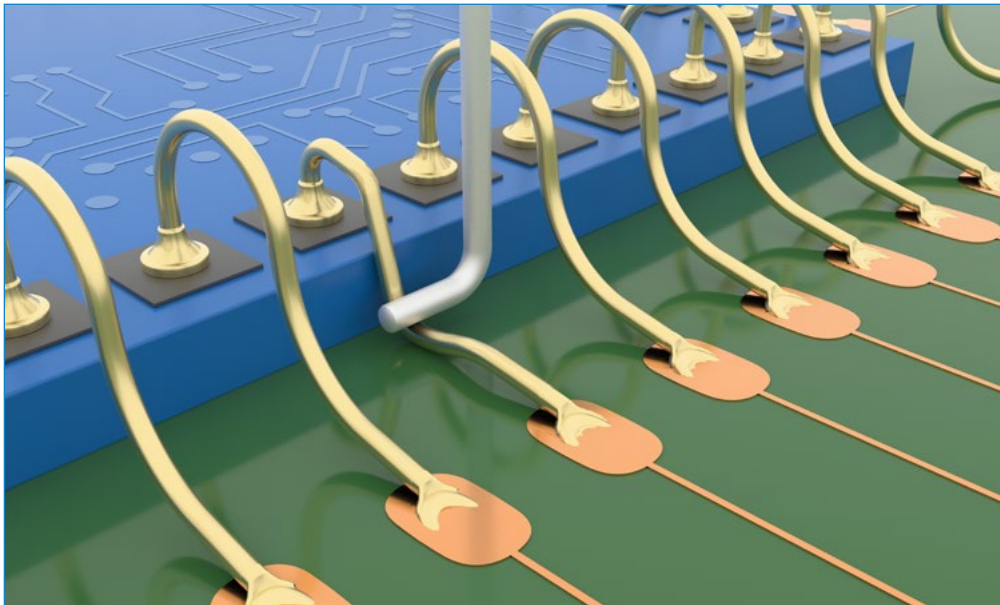
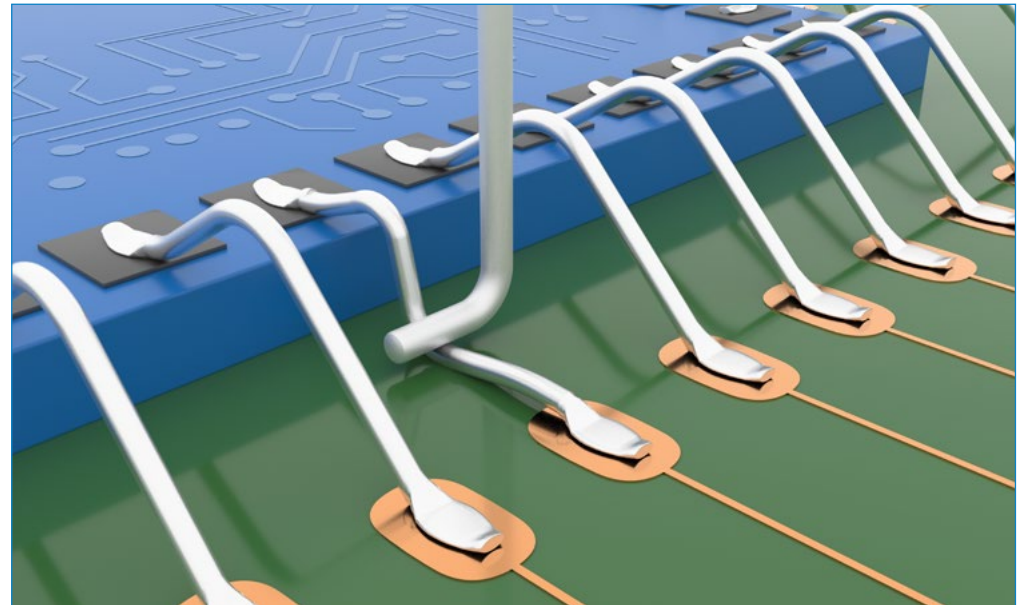


Fail codes

Gold wire

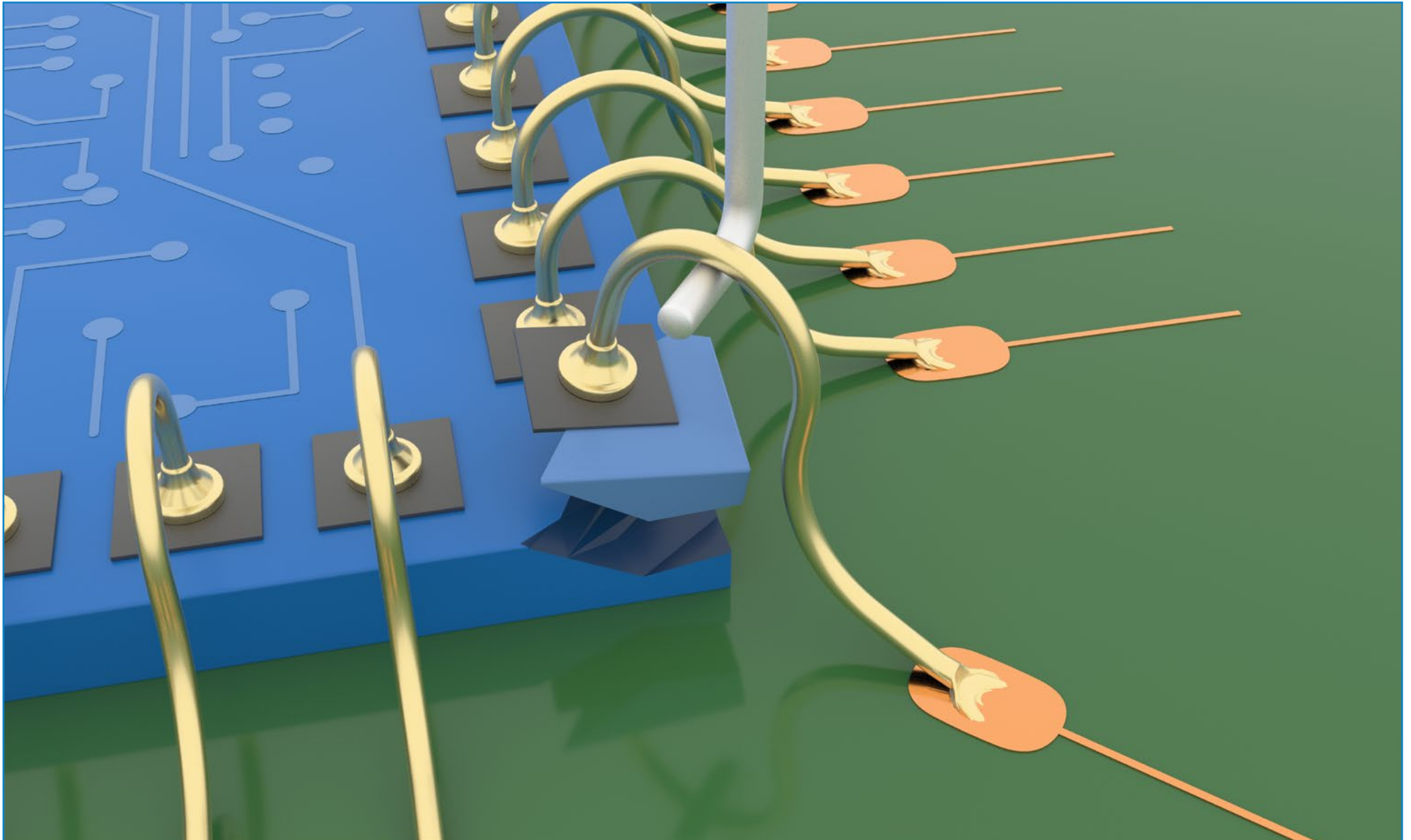


Aluminium wire



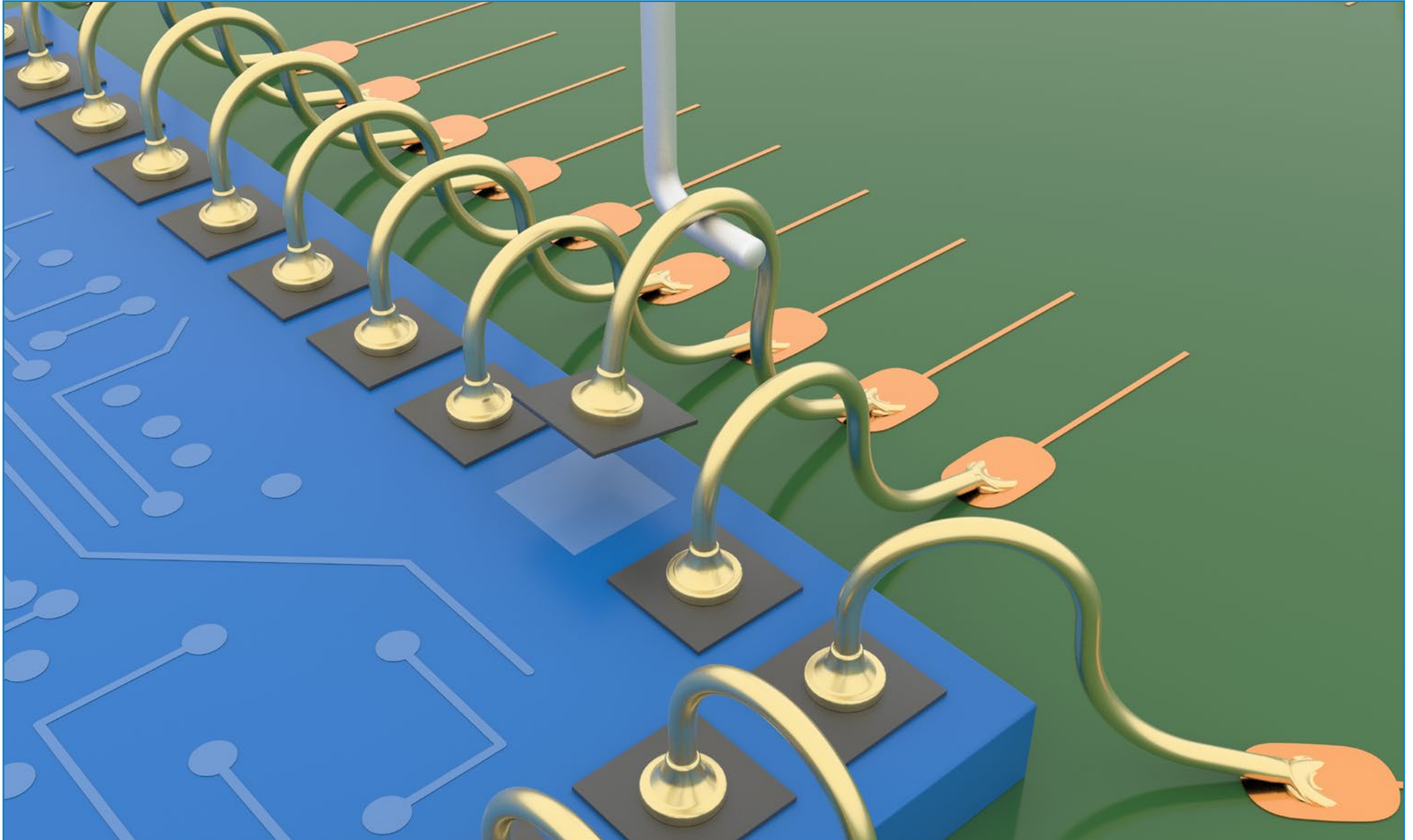
Gold wire - Fail code 1

Fracture or chip-out of die (includes cratering)



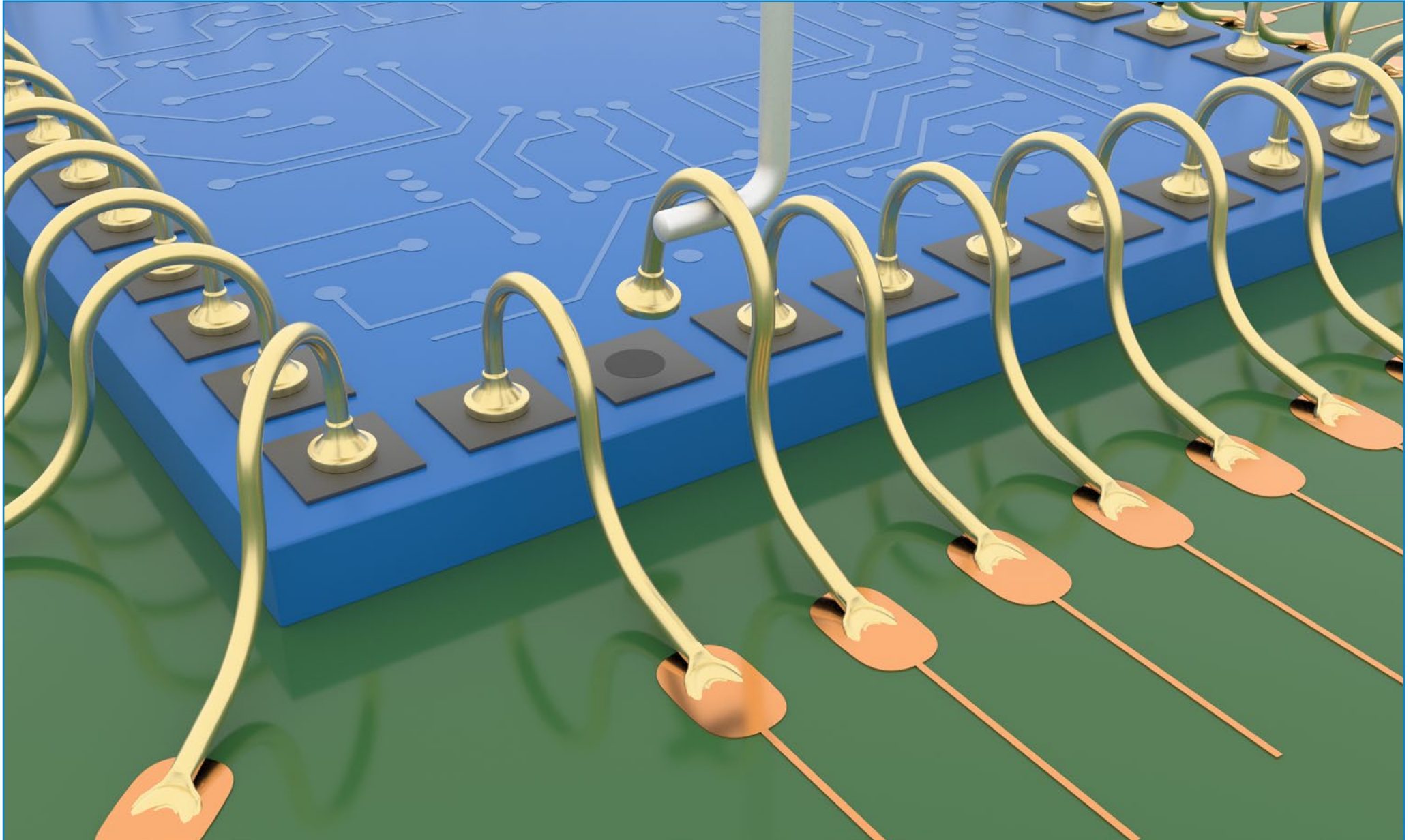
Gold wire - Fail code 2

Lift die metalization or failure within metalization



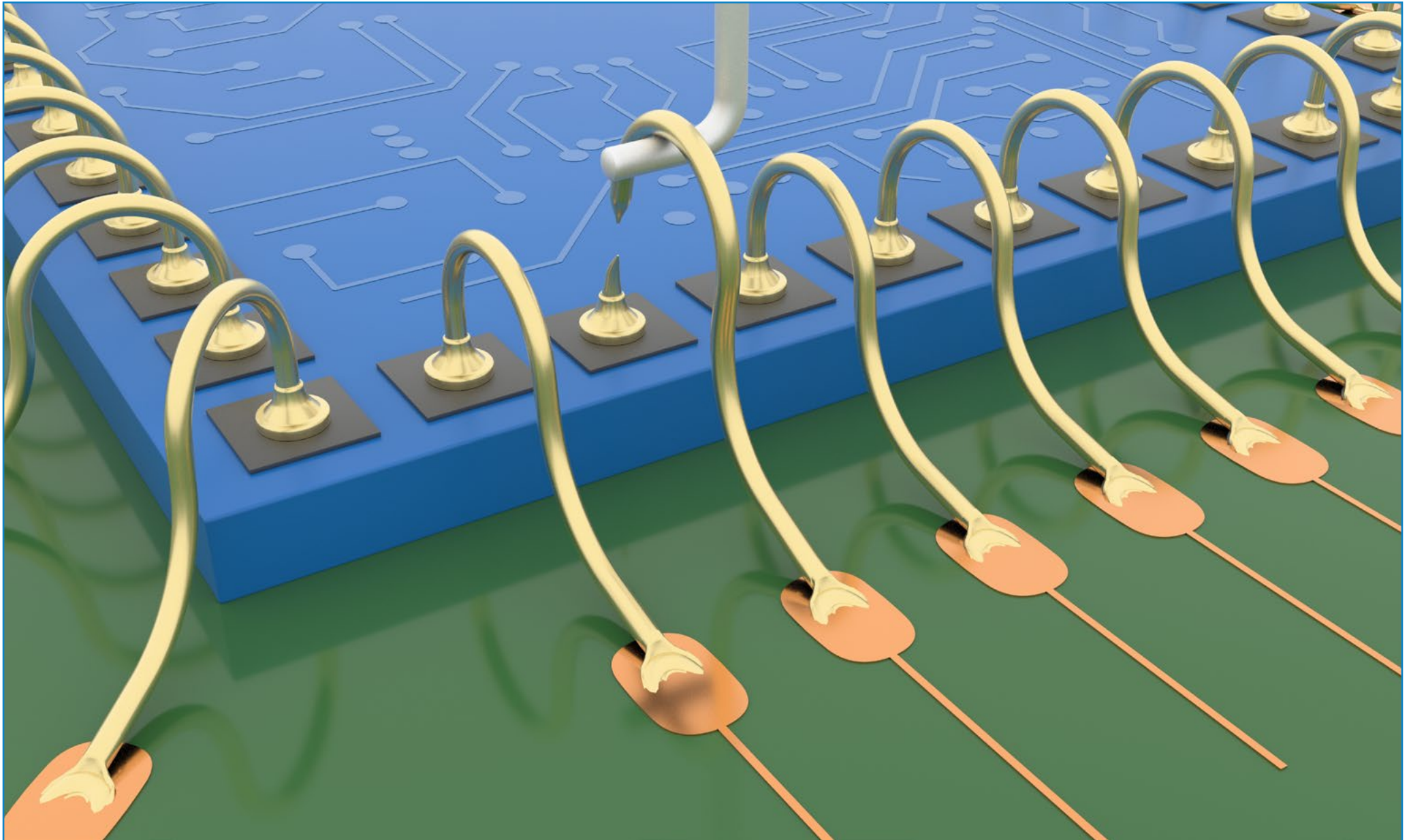
Gold wire - Fail code 3

Lift of bond from die metalization



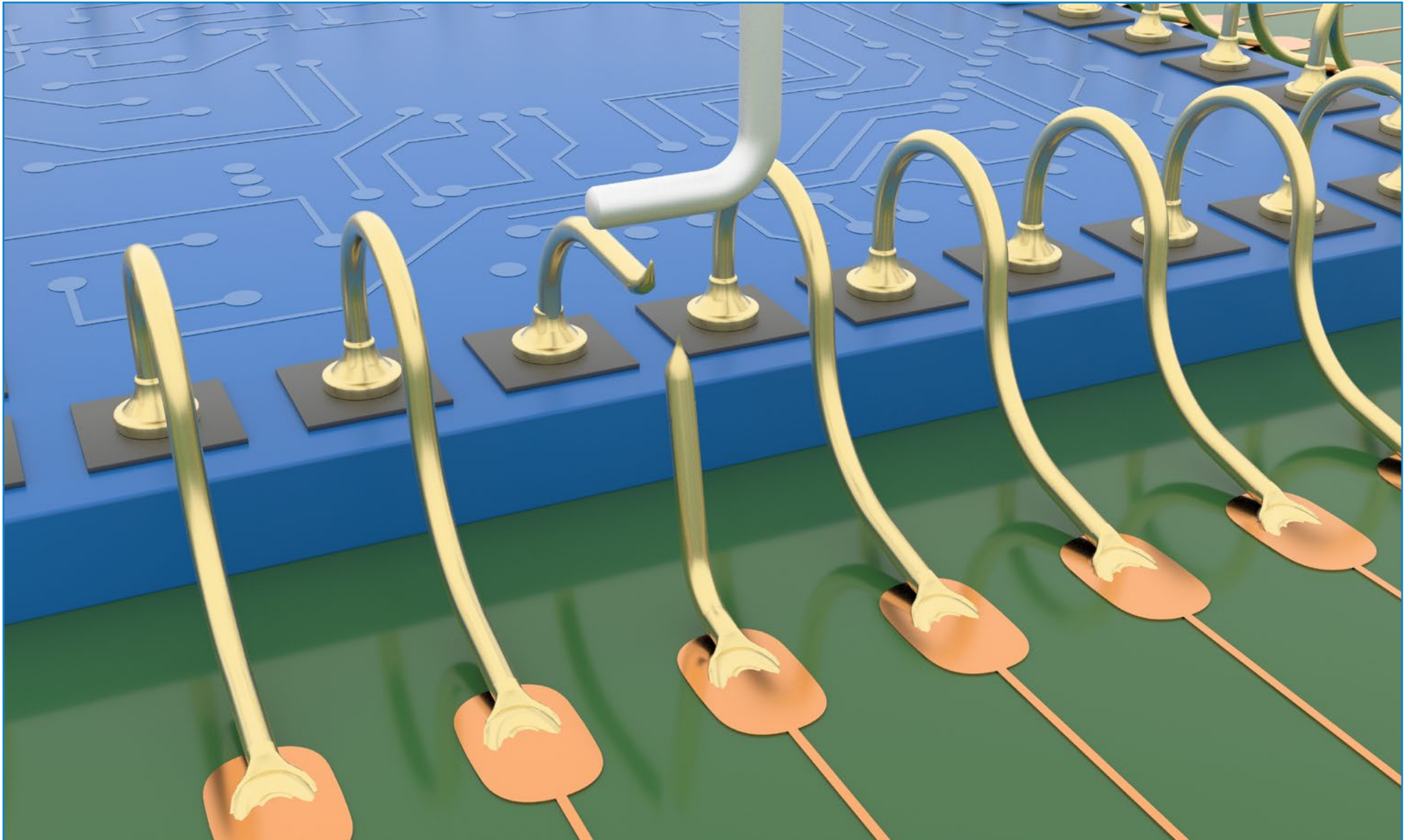
Gold wire - Fail code 4

Break in wire at the 'neckdown point' of the first bond



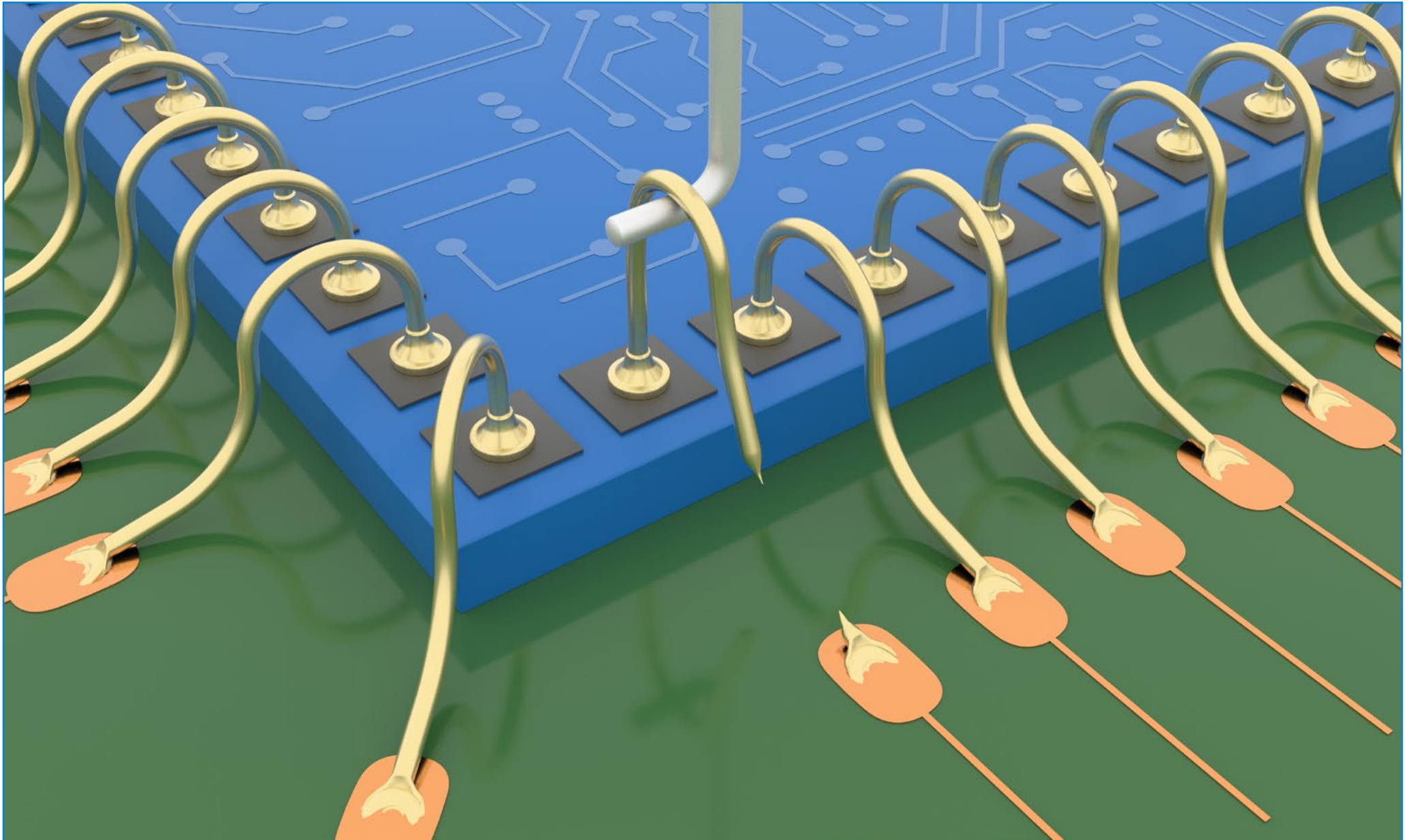
Gold wire - Fail code 5

Break in span of the wire



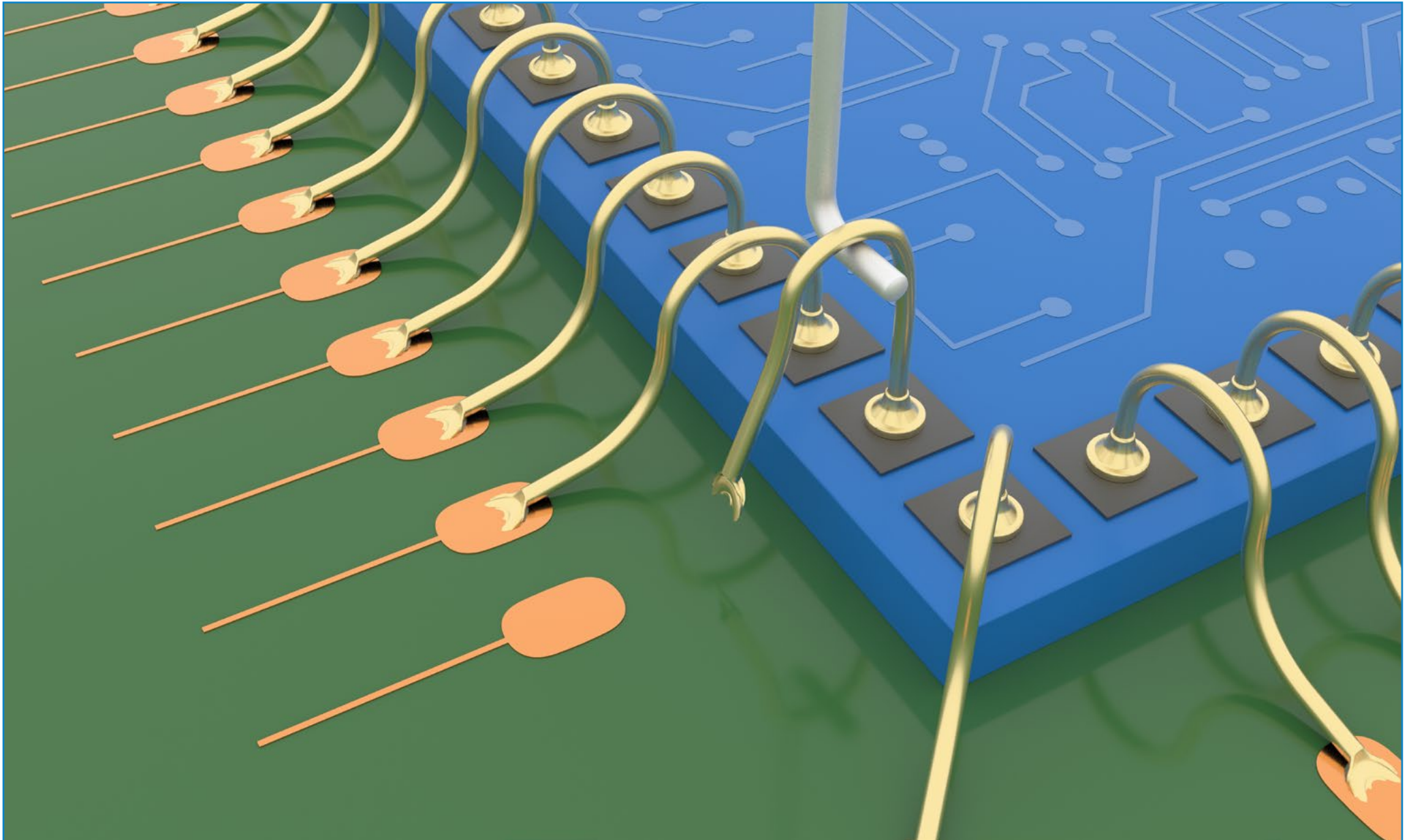
Gold wire - Fail code 6

Break in wire at the 'neckdown point' of the second bond



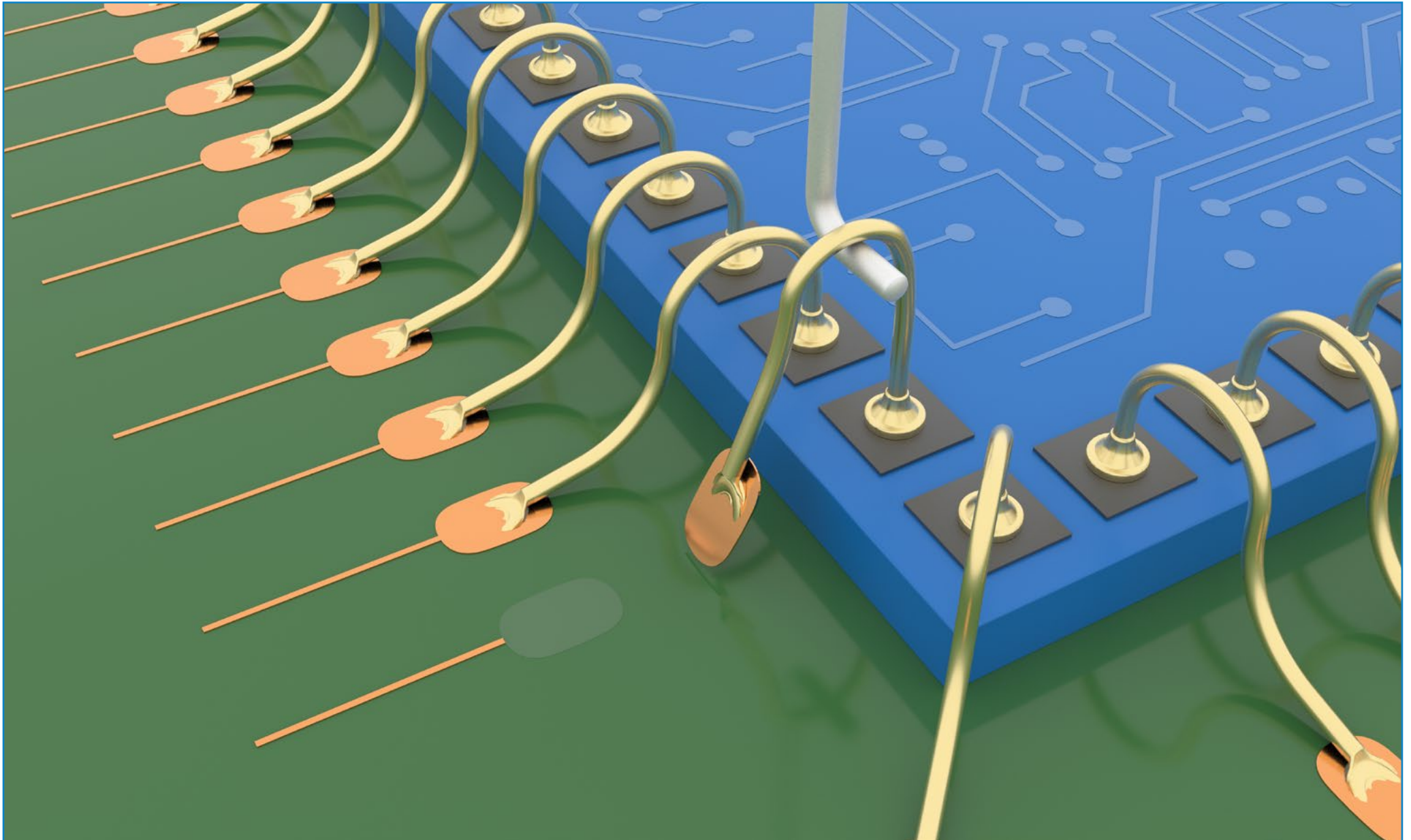
Gold wire - Fail code 7

Lift of bond from substrate / leadframe / post metalization



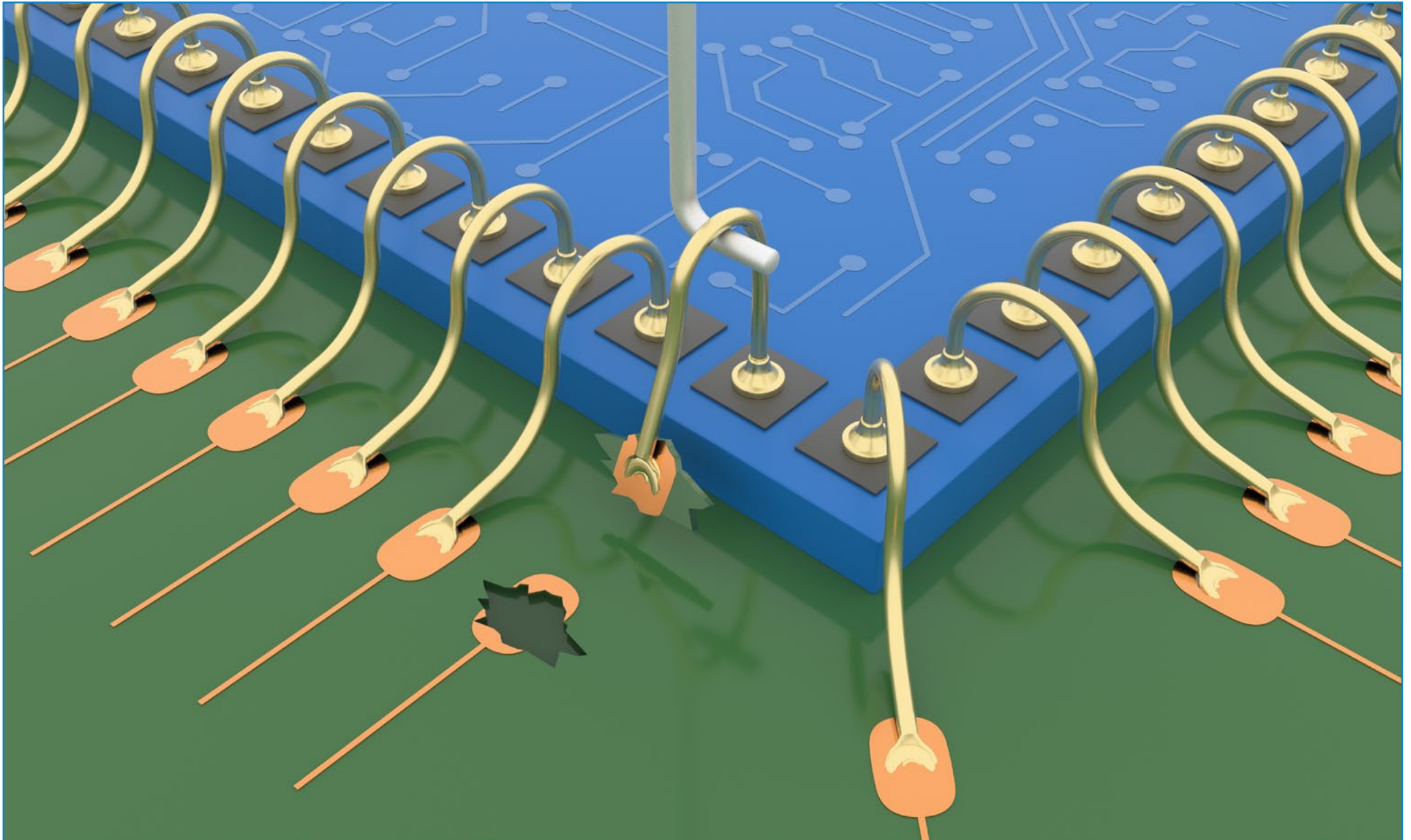
Gold wire - Fail code 8

Lifted substrate / leadframe / post metalization



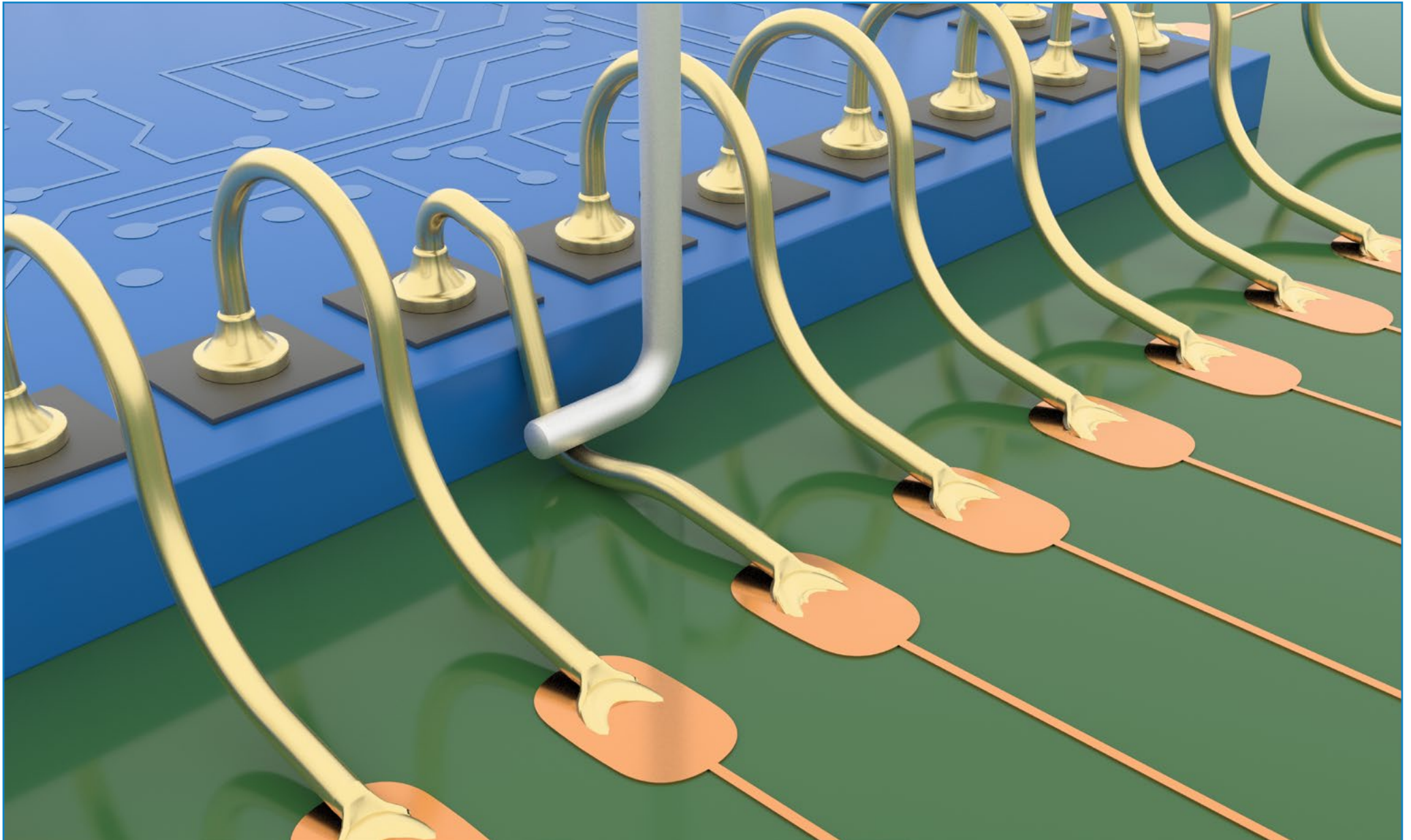
Gold wire - Fail code 9

Fracture or lift of substrate / leadframe / post



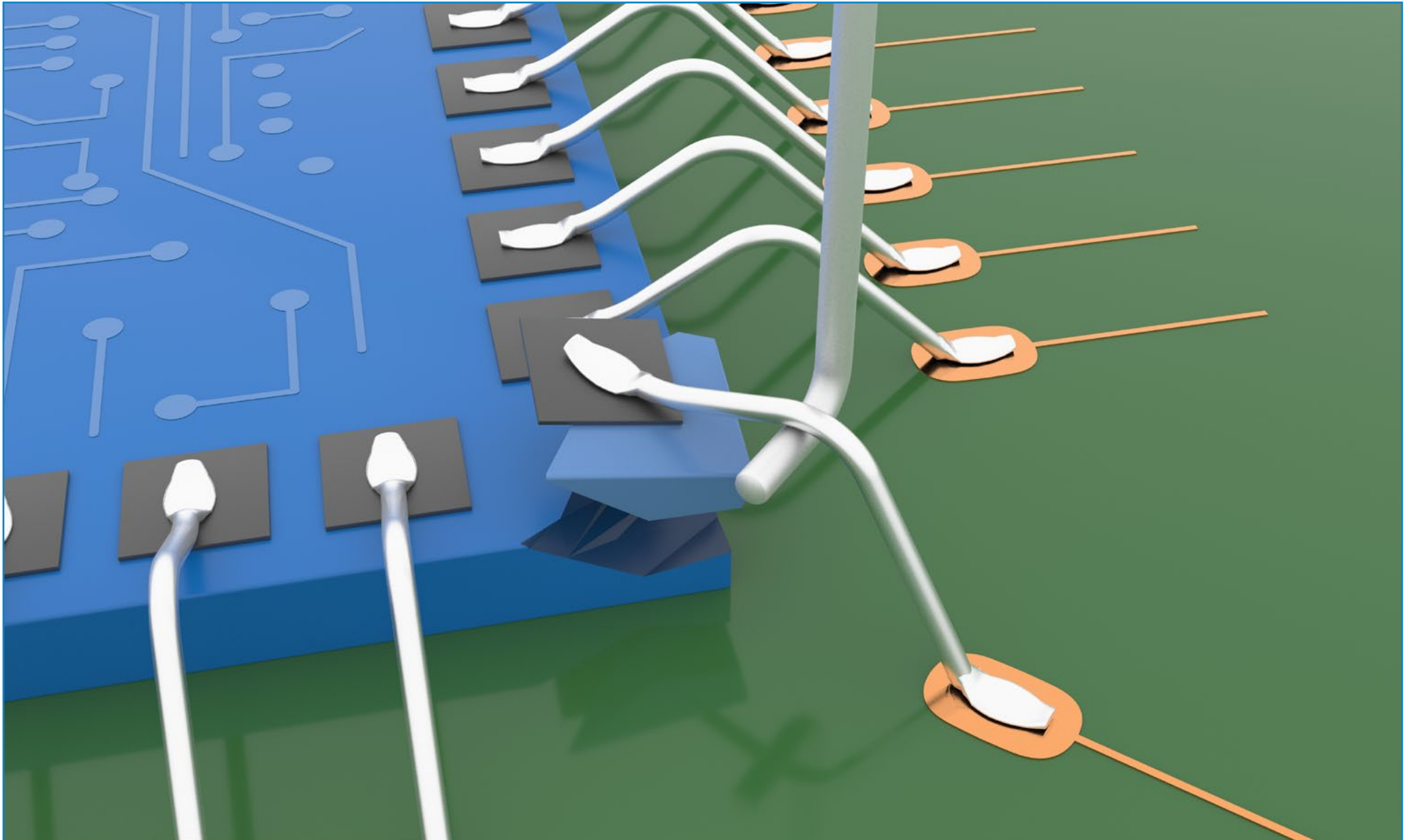
Gold wire - Fail code 10

Operator error or wire damaged / missing prior to test



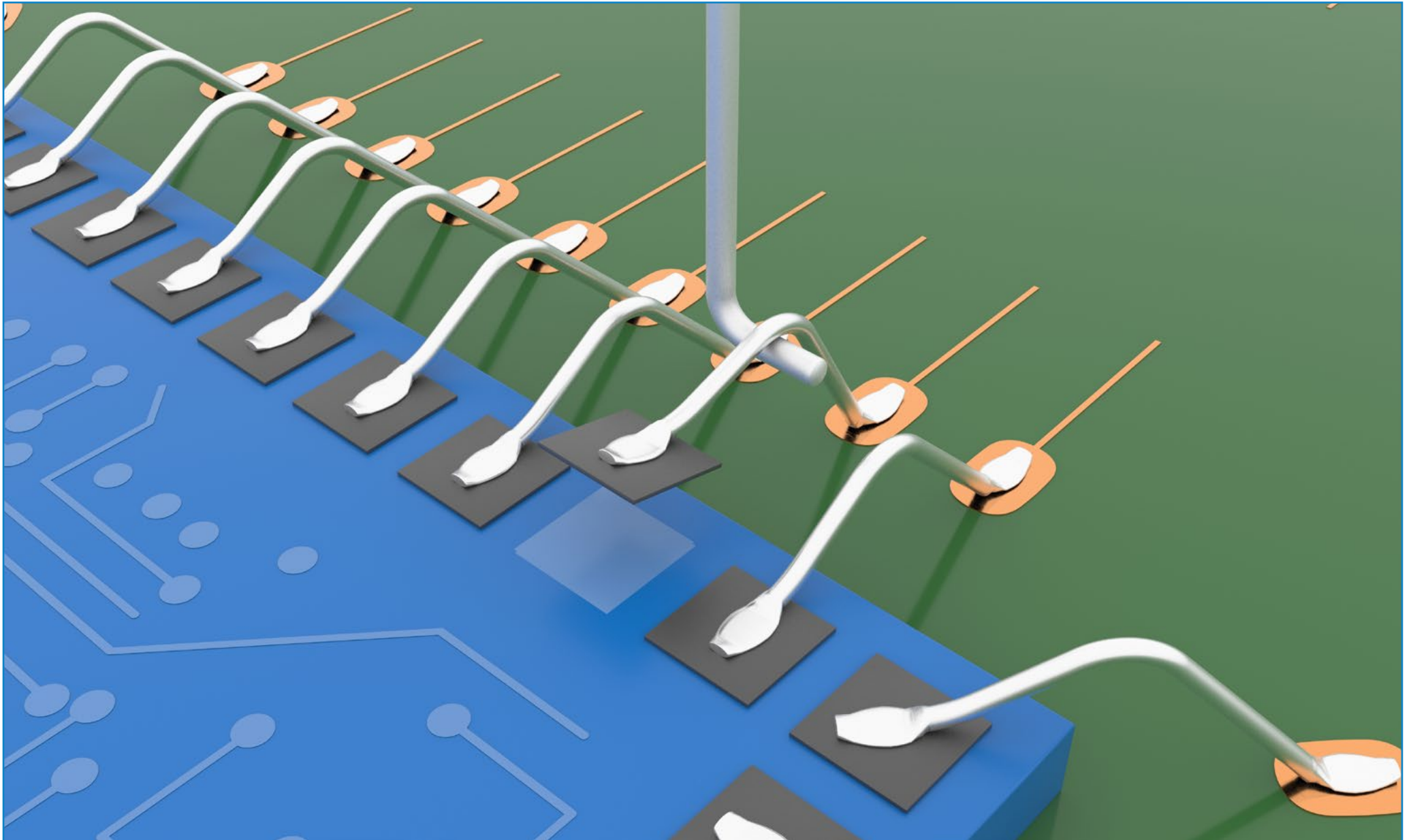
Aluminium wire - Fail code 1

Fracture or chip-out of die (includes cratering)



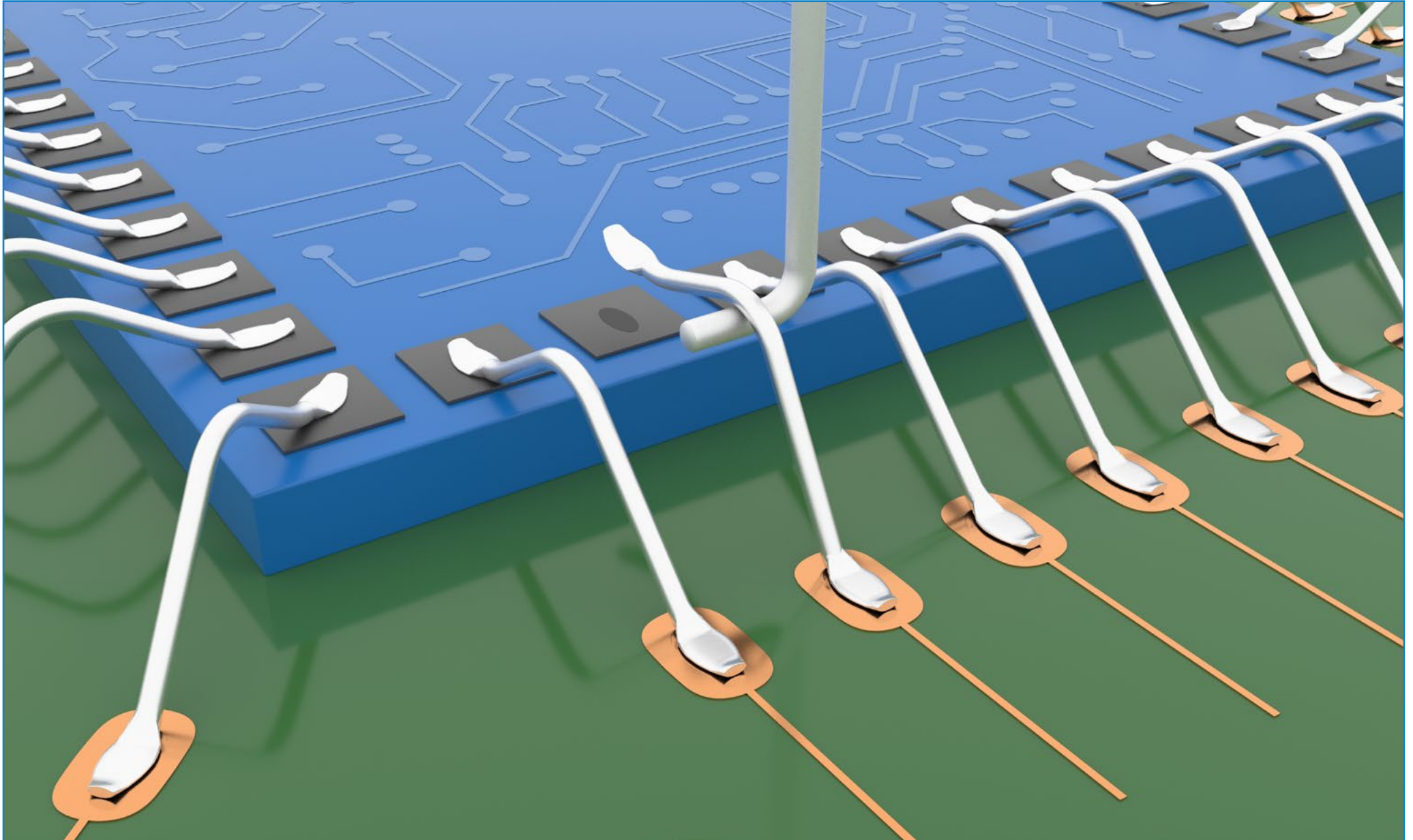
Aluminium wire - Fail code 2

Lift die metalization or failure within metalization



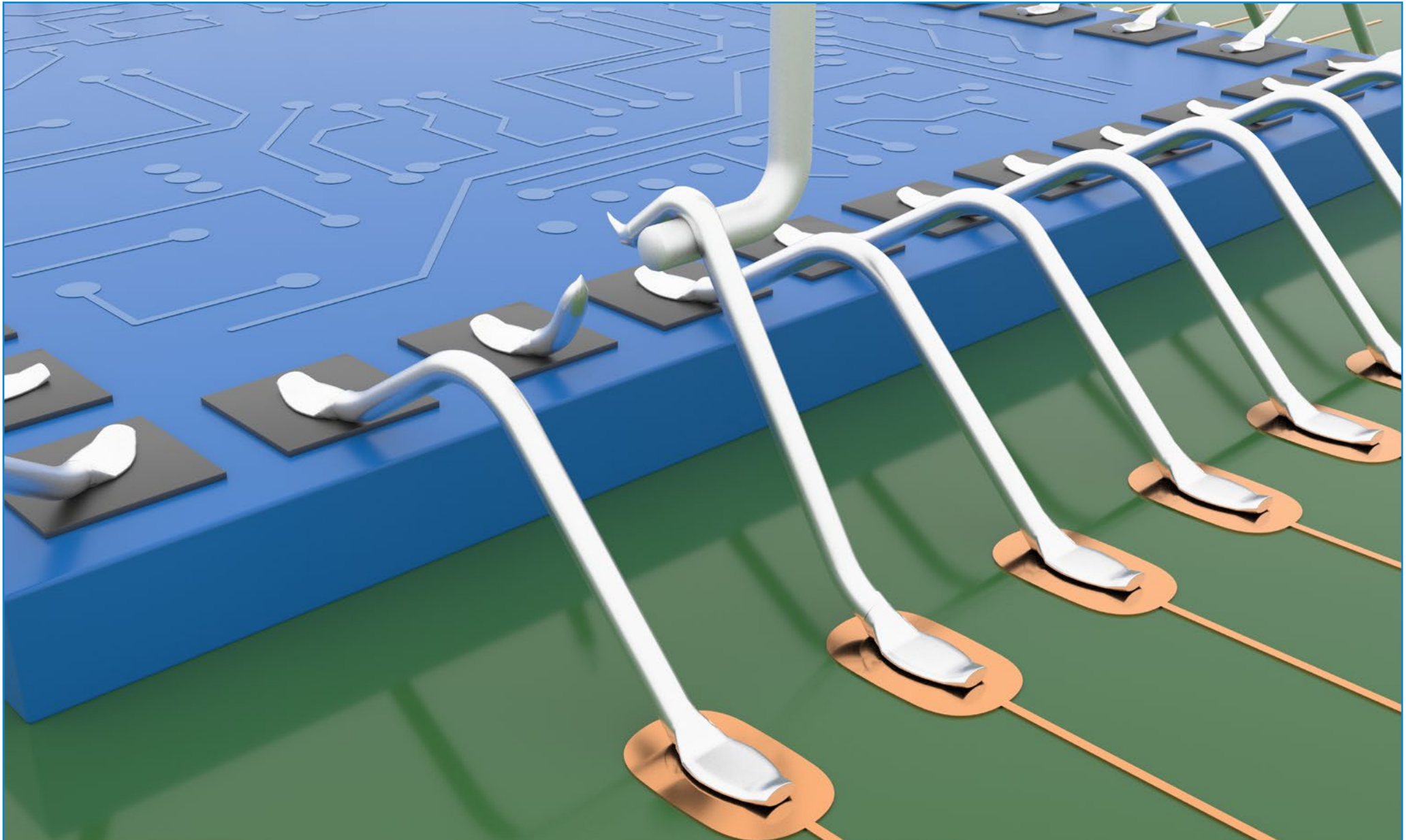
Aluminium wire - Fail code 3

Lift of bond from die metalization



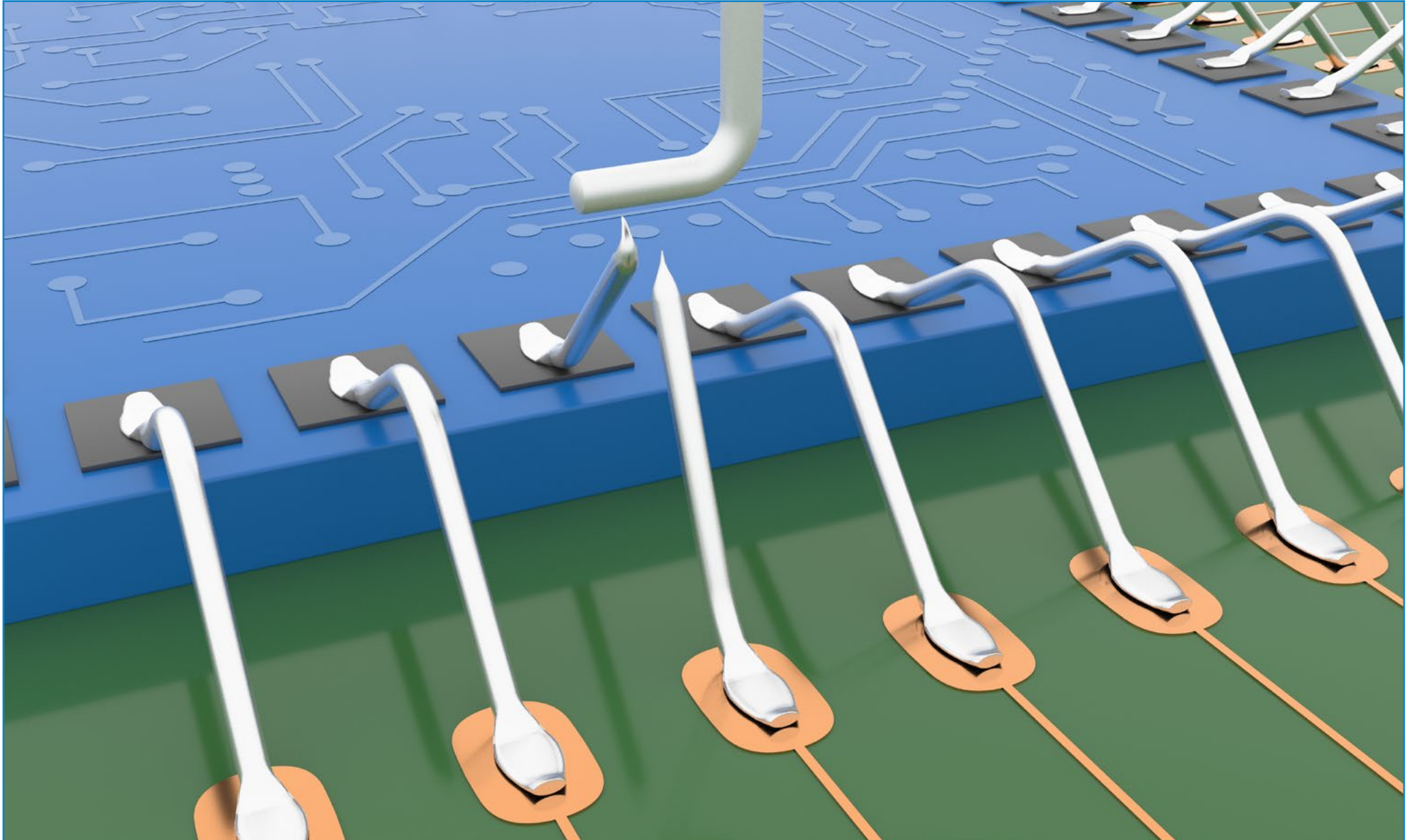
Aluminium wire - Fail code 4

Break in wire at the 'neckdown point' of the first bond



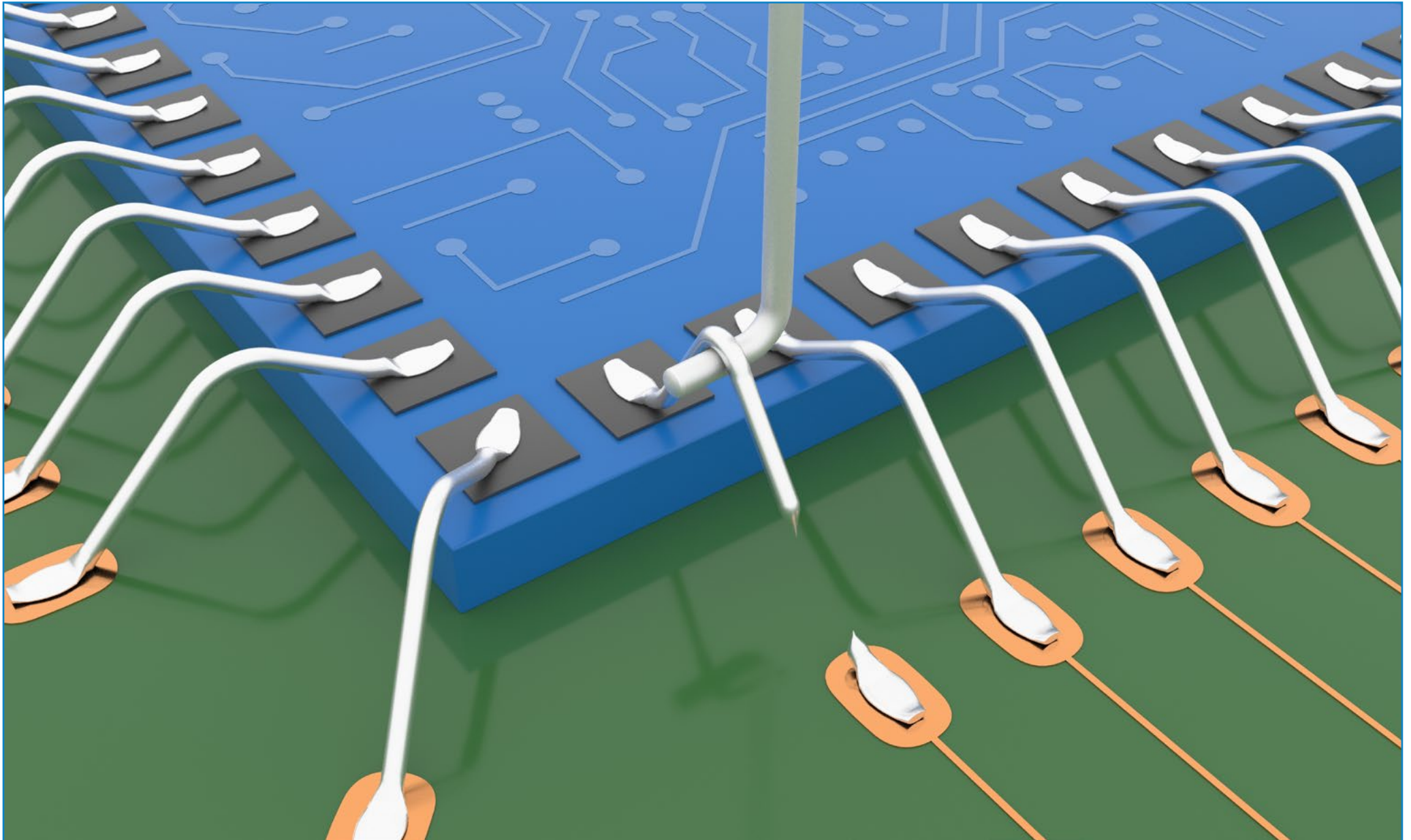
Aluminium wire - Fail code 5

Break in span of the wire



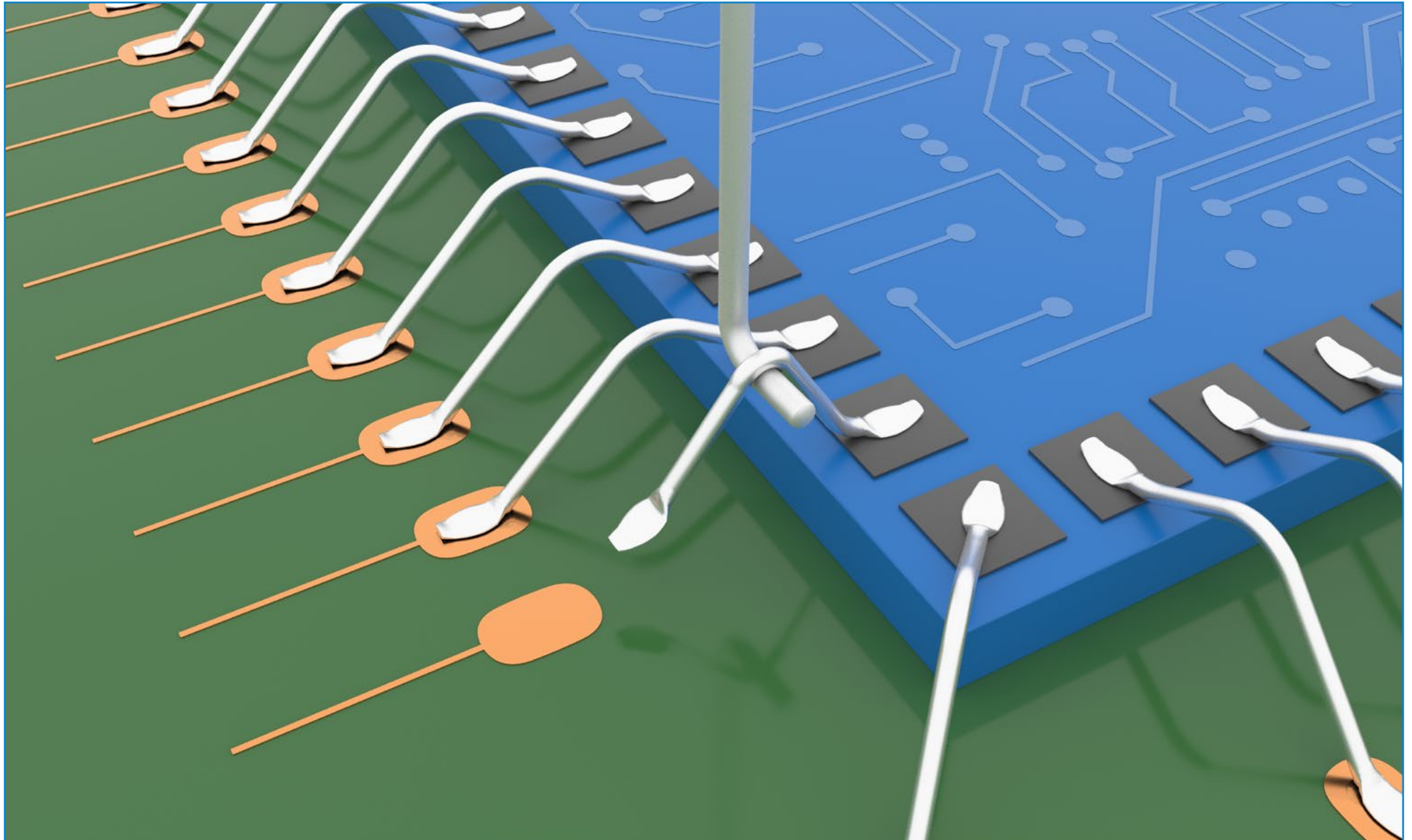
Aluminium wire - Fail code 6

Break in wire at the 'neckdown point' of the second bond



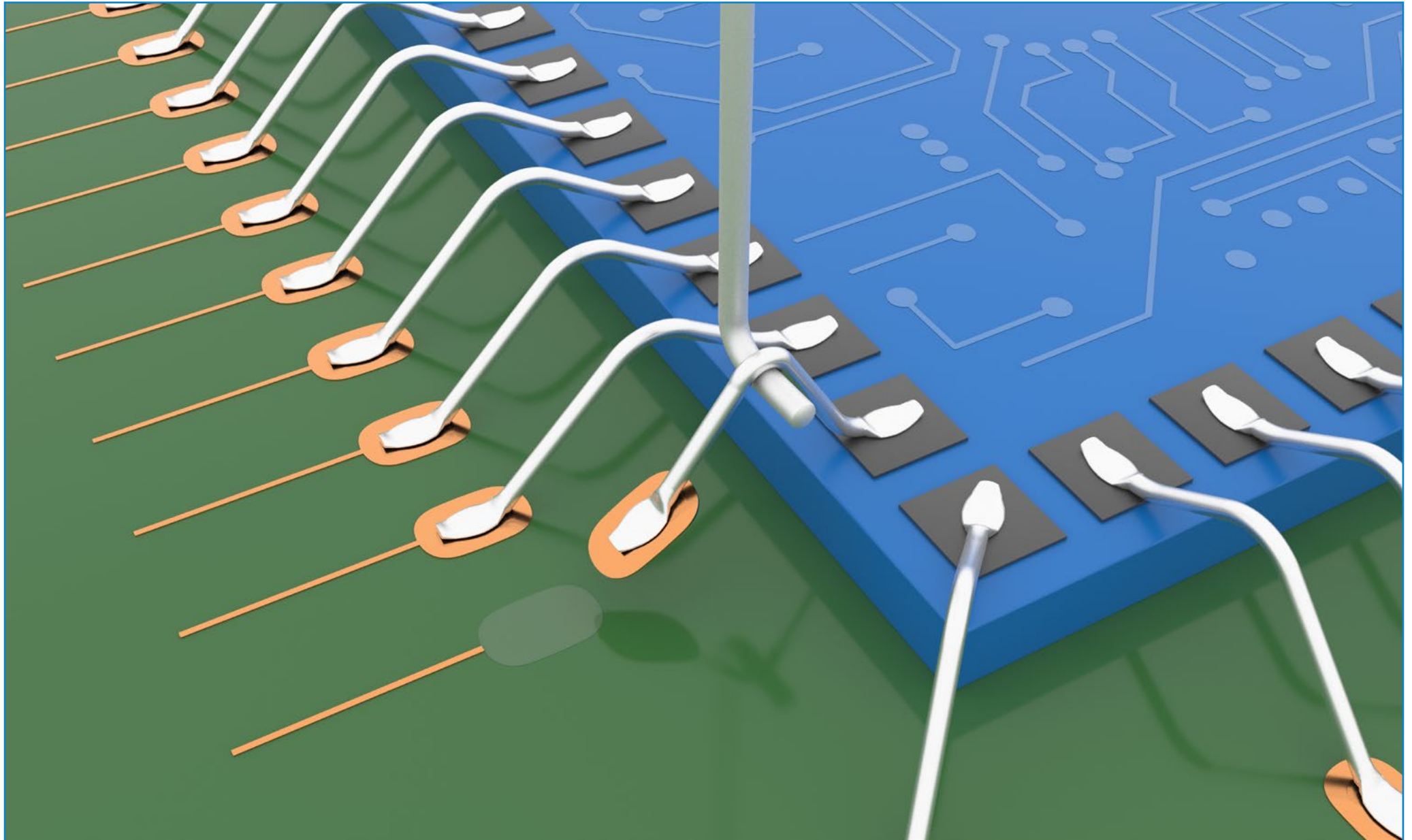
Aluminium wire - Fail code 7

Lift of bond from substrate / leadframe / post metalization



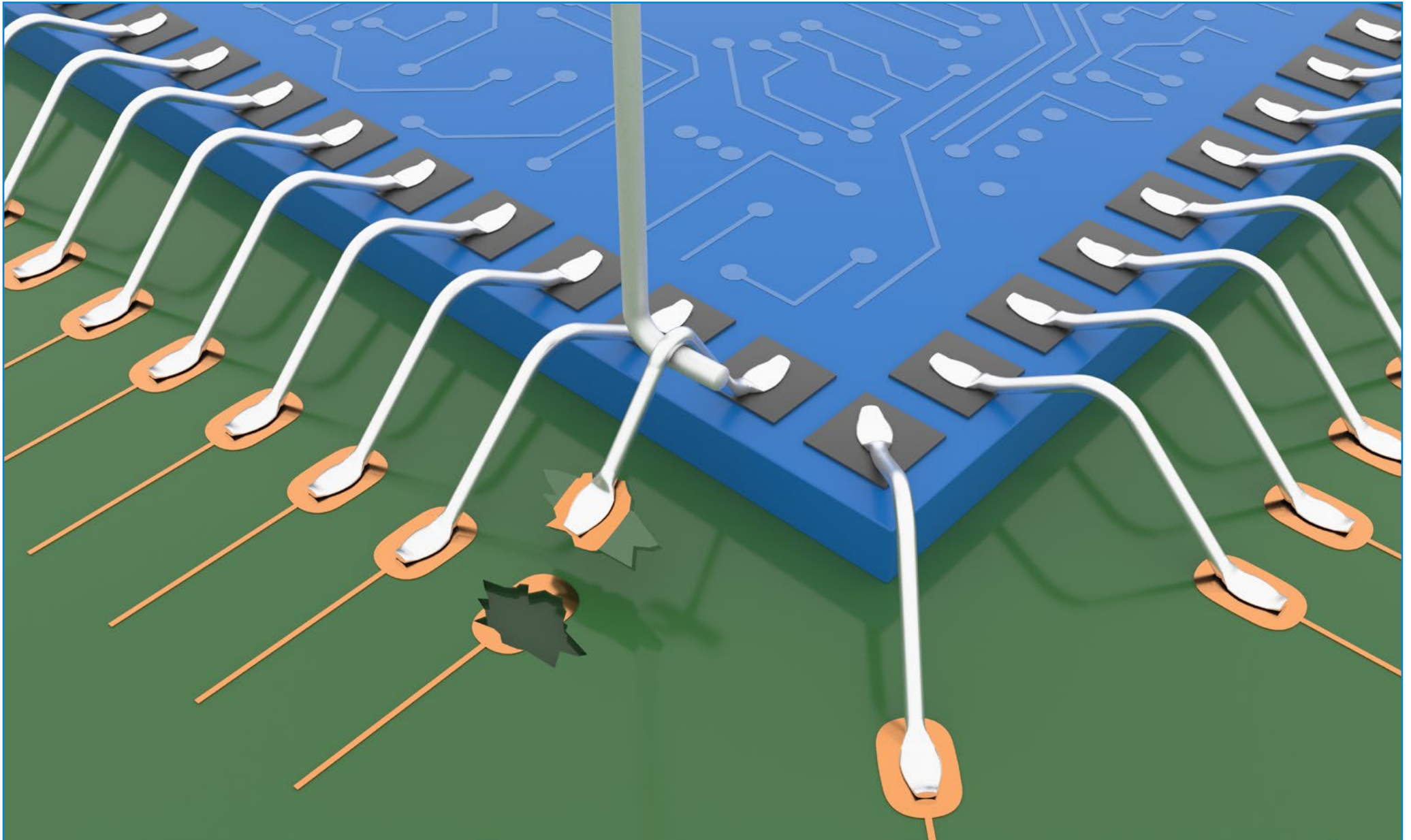
Aluminium wire - Fail code 8

Lifted substrate / leadframe / post metalization



Aluminium wire - Fail code 9

Fracture or lift of substrate / leadframe / post



Aluminium wire - Fail code 10

Operator error or wire damaged / missing prior to test

