

Dial-A-Dose and Other Animal Health Syringes

Single and multi-dose products for large and small animals



Dial-A-Dose and Posi-Dose syringes allow users to select exact dosing amount.



Available in single and multi-dose options.



Range of nozzles for different animals.

Nordson EFD offers a comprehensive selection of dosing syringes used in the treatment of horses, cows, and many other animals.

Available in single or multi-dose options, EFD disposable animal health syringes are used to package medications, supplements, and a variety of other creams, gels, and pastes.

For multi-dose use, EFD Dial-A-Dose® syringes offer an innovative, customizable solution to tailor doses based on animal size, treatment schedule, and other requirements. The system's integrated ring allows users to "dial in" and administer the correct dose, and then securely reseal the syringe until its next use.

EFD's Posi-Dose® system is designed for equine oral deworming treatments. Its unique twist-lock ring snaps into position to set the specific dosing volume. And its nozzle-free design ensures positive confirmation that each dose is completely dispensed. Posi-Dose syringes can also be capped for multi-dose use.

Other one-piece and two-piece plungers without the locking mechanism are also available. In addition, many EFD Do-It-Yourself (DIY) dual syringes can be used for small animals. Ask your EFD application specialist for details.

Dial-A-Dose and Posi-Dose syringes safely package veterinary pharmaceuticals, nutritional supplements, and other products. They are available in 6cc to 100cc volumes.

Features

- Range of sizes, colors, and nozzles
- Self-venting barrels with "lead-in" aid for easy fill

Benefits

- Dial-A-Dose allows veterinarians or owners to dose the animal, cap the syringe, and save for next dose
- Locking ring ensures exact amount is dispensed
- Faster and easier to repeat dose than other syringes
- Different nozzles to easily dispense any material viscosity for oral, topical, intramammary, or rectal applications



more info




Dial-A-Dose and Other Animal Health Syringe Systems


ANIMAL HEALTH SYRINGE SYSTEMS

Syringes include integrated molded nozzle. Order plungers and caps separately. White caps molded in LDPE.


Nozzle Style: Thin Taper 1/16" ID x 1-1/18" Length

|  | Syringe | Size | Material | Color | Cap | Dial-A-Dose | One-Piece | Two-Piece |
|---|---------|------|----------|-------|---------|-------------|-----------|-----------|
| | 7660277 | 6cc | PE | White | 7660194 | — | 7660292 | — |
| | 7022846 | 15cc | PE | White | 7660194 | 7660343 | 7660329 | 7660333 |


Nozzle Style: Luer Lock 1/16" ID x 1/4" Length

|  | Syringe | Size | Material | Color | Cap | Dial-A-Dose | One-Piece | Two-Piece |
|---|---------|------|----------|-------|---------|-------------|-----------|-----------|
| | 7660392 | 32cc | PP | Amber | 7660246 | 7660452 | — | 7660436 |
| | | | | | | | | |

Nozzle Style: Standard Oral 3/16" ID x 1-13/32" Length


|  | Syringe | Size | Material | Color | Cap | Dial-A-Dose | One-Piece | Two-Piece |
|---|---------|-------|----------|-------|---------|-------------|-----------|-----------|
| | 7660313 | 15cc | PE | White | 7660198 | 7660343 | 7660329 | 7660333 |
| | 7660369 | 30cc | PE | Black | 7660198 | — | 7660380 | — |
| | 7660399 | 32cc | PE | White | 7660198 | 7660452 | — | 7660436 |
| | 7660571 | 100cc | PP | Clear | 7660198 | 7660580 | — | 7660581 |

Nozzle Style: Posi-Dose 25/64" ID


|  | Syringe | Size | Material | Color | Cap | Dial-A-Dose | One-Piece | Two-Piece |
|---|----------|------|----------|-------|---------|-------------|-----------|-----------|
| | 7660282* | 6cc | PE | White | 7660206 | — | — | — |
| | | | | | | | | |

*Note: Posi-Dose plunger included with syringe.


Nozzle Style: Medium Oral 9/32" ID x 1-13/32" Length

|  | | | | | | Multi-Dose Plunger Options | Single-Dose Plunger Options | |
|---|---------|------|----------|-------|---------|----------------------------|-----------------------------|-----------|
| | Syringe | Size | Material | Color | Cap | Dial-A-Dose | One-Piece | Two-Piece |
| | 7660419 | 32cc | PE | White | 7660207 | 7660452 | — | 7660436 |
| | 7660482 | 34cc | PE | White | 7660207 | 7660452 | — | 7660436 |


Nozzle Style: Cone 3/32" ID x 1-1/2" Length

|  | Syringe | Size | Material | Color | Cap | Dial-A-Dose | One-Piece | Two-Piece |
|---|---------|------|----------|-------|---------|-------------|-----------|-----------|
| | 7660371 | 30cc | PE | White | 7660201 | — | 7660380 | — |
| | | | | | | | | |

Nozzle Style: Medium Oral 1/4" ID x 1-23/64" Length

|  | Syringe | Size | Material | Color | Cap | Dial-A-Dose | One-Piece | Two-Piece |
|---|---------|------|----------|-------|---------|-------------|-----------|-----------|
| | 7660552 | 80cc | PE | White | 7660207 | 7660557 | — | 7660938 |
| | | | | | | | | |

Nozzle Style: Wide Oral 13/32" ID x 1-5/16" Length

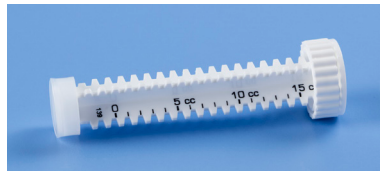
|  | Syringe | Size | Material | Color | Cap | Dial-A-Dose | One-Piece | Two-Piece |
|---|---------|-------|----------|-------|---------|-------------|-----------|-----------|
| | 7660522 | 60cc | PE | White | 7660191 | 7660538 | — | 7660528 |
| | 7660553 | 80cc | PE | White | 7660191 | 7660557 | — | 7660938 |
| | 7660572 | 100cc | PE | White | 7660191 | 7660580 | — | 7660581 |

Standard Multi-Dose Plungers

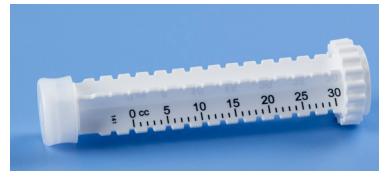
Choose a Dial-A-Dose or Posi-Dose plunger for measured multi-dose use. Sample plunger calibration marks shown below. Custom colors and calibrations available.



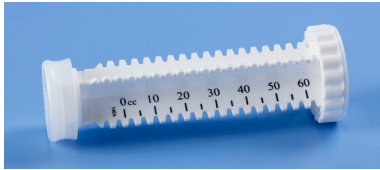
6cc Posi-Dose plunger



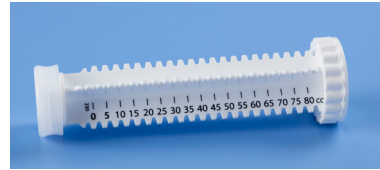
15cc Dial-A-Dose plunger



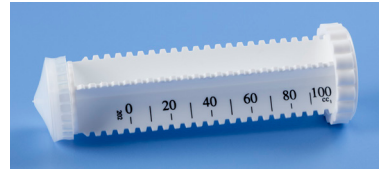
30cc Dial-A-Dose plunger



60cc Dial-A-Dose plunger



80cc Dial-A-Dose plunger



100cc Dial-A-Dose plunger

Standard One- and Two-Piece Plungers

Choose a one-piece or two-piece plunger when measured doses aren't required. One-piece plungers feature integrally-molded seals, while two-piece plungers allow more flexibility for different fluids. Both styles retract easily to eliminate drip and drool, and maximize product use.



One-piece plunger



Two-piece plunger



For Nordson EFD sales and service in over 40 countries, contact Nordson EFD or go to www.nordsonefd.com.

Global

800-556-3484; +1-401-431-7000
info@nordsonefd.com

Europe

008007001 7001
infoefd.europe@nordsonefd.com

Asia

China: +86 (21) 3866 9006; china@nordsonefd.com
India: +91 80 4021 3600; india@nordsonefd.com
Japan: +81 03 5762 2760; japan@nordsonefd.com
Korea: +82-31-736-8321; korea@nordsonefd.com
SEAsia: +65 6796 9522; sin-mal@nordsonefd.com