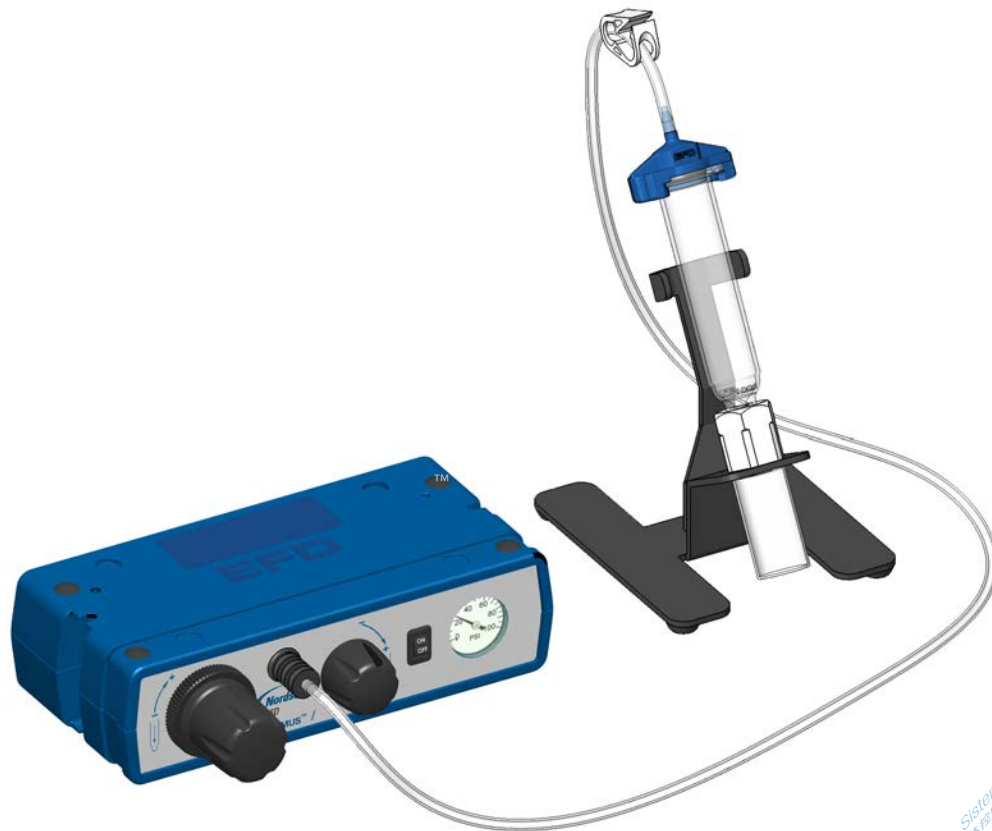


# Performus I Series Fluid Dispensers

## Quick Start Guide



Unpack the unit. Now is a good time to activate the warranty online at [www.nordsonefd.com/warranty/dispensers/one](http://www.nordsonefd.com/warranty/dispensers/one).

- 1.** **NOTE:** Clean, dry filtered air is required to meet warranty. If your air supply is not filtered, order the 5-micron filter / regulator (P/N 7002002).

Turn the air regulator adjustment knob to zero (0).

Connect one end of the air input hose to the Performus™; connect the other end to the plant air supply. Set the plant air supply between 5.5–7.0 bar (80–100 psi).

- 2.** Attach the plug that matches the local power outlet to the power pack.

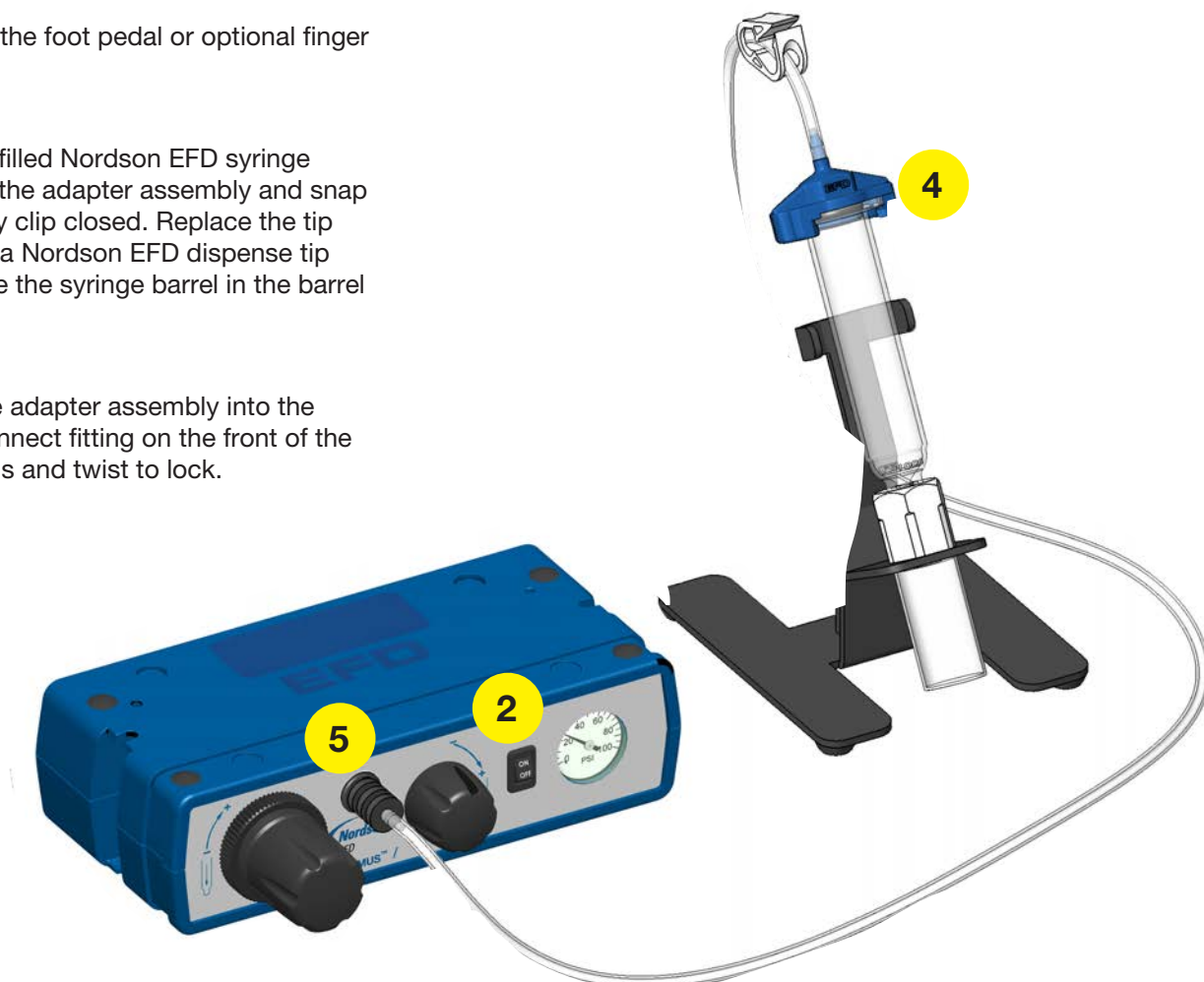
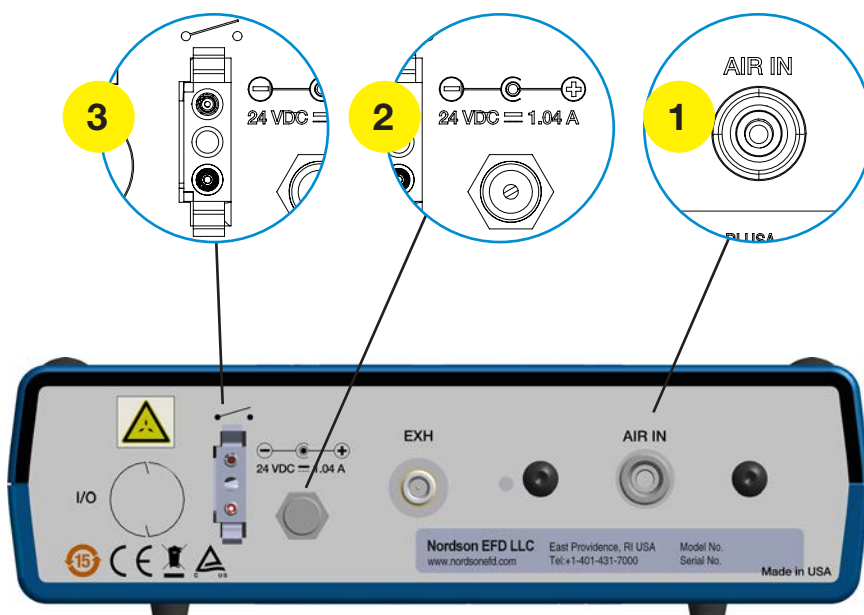
Connect the power cord to the Performus and insert the plug into the local power source.

Press the power button on the front panel.

- 3.** Connect the foot pedal or optional finger switch.

- 4.** Attach a filled Nordson EFD syringe barrel to the adapter assembly and snap the safety clip closed. Replace the tip cap with a Nordson EFD dispense tip and place the syringe barrel in the barrel stand.

- 5.** Insert the adapter assembly into the quick-connect fitting on the front of the Performus and twist to lock.



6. Unsnap the safety clip. Depress and hold the foot pedal for the remainder of this setup.
7. While resting the tip on the paper (test surface), SLOWLY turn the air pressure regulator clockwise until fluid starts to exit from the tip.
8. Keep increasing the air pressure until you have reached the desired fluid dispensing flow rate.  
**NOTE:** Always use the lowest possible pressure and the largest possible tip size. The combination of the lowest possible output pressure + largest possible tip size + longest possible dispense duration = most consistent and accurate deposits.
9. Release the foot pedal.
10. Retest the dispensing rate a few more times. Fine-tune as required by making small changes in pressure.
11. Push the air regulator adjustment knob in to lock the setting.





For Nordson EFD sales and service in over 40 countries, contact Nordson EFD or go to [www.nordsonefd.com](http://www.nordsonefd.com).

**Global**

800-556-3484; +1-401-431-7000  
[info@nordsonefd.com](mailto:info@nordsonefd.com)

**Europe**

00800 7001 7001  
[infoefd.europe@nordsonefd.com](mailto:infoefd.europe@nordsonefd.com)

**Asia**

China: +86 (21) 3866 9006; [china@nordsonefd.com](mailto:china@nordsonefd.com)  
India: +91 80 4021 3600; [india@nordsonefd.com](mailto:india@nordsonefd.com)  
Japan: +81 03 5762 2760; [japan@nordsonefd.com](mailto:japan@nordsonefd.com)  
Korea: +82-31-736-8321; [korea@nordsonefd.com](mailto:korea@nordsonefd.com)  
SEAsia: +65 6796 9522; [sin-mal@nordsonefd.com](mailto:sin-mal@nordsonefd.com)

The Wave Design is a trademark of Nordson Corporation.  
©2021 Nordson Corporation 7363460 v012521