

Worldwide Service and Support

Nordson helps protect your investment with exceptional people, programs and service to keep your equipment in peak operating condition. For your satisfaction, Nordson solutions are backed by a Package of Values® that include:

- Locally-available service network
- Service & preventive maintenance plans
- Global service and distribution centers
- Repair and exchange programs



1. Plastic Bonding
Assembly
TWS Earbuds
AR/VR
Laptop

2. Automotive
EV Battery
Auto Lamp
Headliner
Trim

3. Fabric bonding
Dots Jetting
Line Dispensing
Strip Coating

4. Appliance
Component Bonding
Foaming
Other Appliance

ADHESIVE DISPENSING SYSTEMS



Precision Adhesive Dispensing for Plastic Bonding Applications

We offer dependable and innovative solutions

For more information, speak with your Nordson representative or contact your Nordson regional office.

United States

Duluth, Georgia
(800) 683-2314 Phone
(866) 667-3329 Fax

China

Shanghai, China
(86) 21-38669166 Phone
(86) 21-38669199 Fax

Europe

Erkrath, Germany
(49) 211-9205-0 Phone
(49) 211-254658 Fax

Japan

Tokyo, Japan
(81) 3-5762-2700 Phone
(81) 3-5762-2701 Fax

Korea

Gyeonggi, Korea
(82) 31-736-8321 Phone
(82) 31-736-8122 Fax

S.E. Asia

Singapore
(65) 65-6796-9500 Phone
(65) 65-6896-9631 Fax

South Asia

Bangalore, India
(91) 80-4021-3600 Phone
(91) 80-4021-3601 Fax

Australia

Sydney, Australia
(61) 2-8814-4695 Phone
(61) 2-9838-7394 Fax



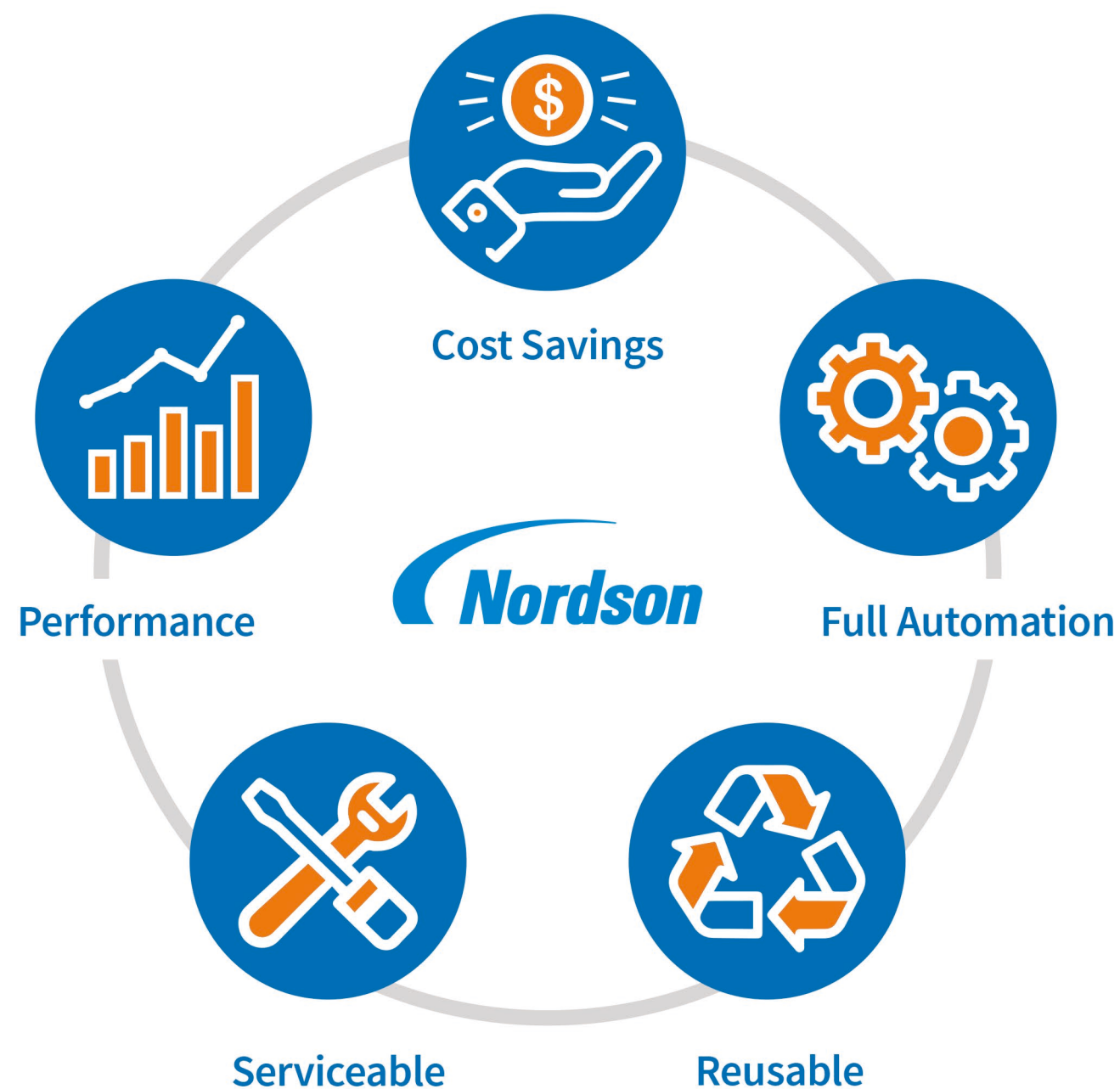
11475 Lakefield Drive
Duluth, GA 30097-1511

(800) 683-2314
nordsonadhesive.com



Why Nordson?

For more than 60 years, Nordson has been at the forefront of designing and producing adhesive dispensing systems for manufacturing operations worldwide. Nordson provides high-speed, precise and innovative adhesive dispensing solutions for Electronics Industry. Our precise dispensing systems provide a more complete solution for meeting consumer requirements for thinner, narrower, more convenient and water-resistant mobile devices, the stringent electronic industry standards for various processes in different production processes. Our Innovative Hot Melt Adhesive Solutions provide the following benefit to you:



\$2.6
billion in sales

7,500+
employees

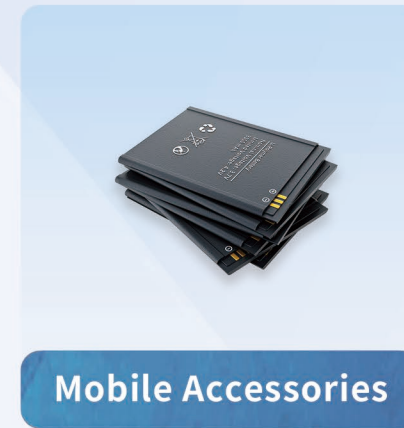
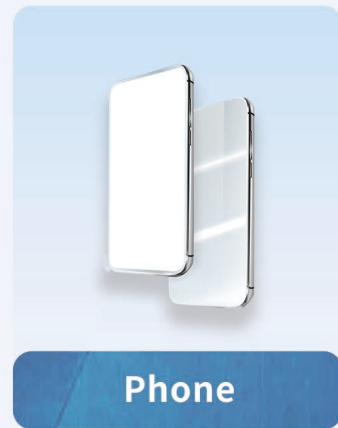
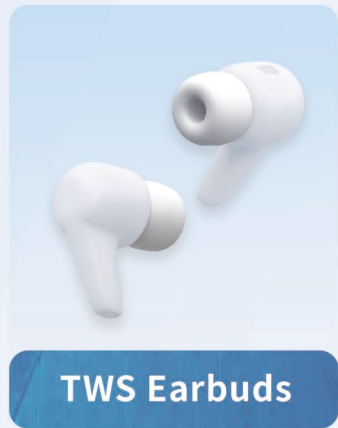
35+
countries

About Nordson Corporation

Nordson is a leading global manufacturer of adhesive dispensing equipment and hot melt machines, Nordson dispensing equipment applies adhesives, sealants and coatings in a variety of patterns to consumer and industrial products in packaging, product assembly and nonwovens applications. Our hot melt systems and glue applicators are made for precision, reliability and repeatability for a large number of applications.

Founded in 1954 and headquartered in Westlake, Ohio

Adhesive Dispensing Plastic Bonding Application



1 Vulan Jet™ II
Dispensing Systems



2 Pro - Meter Micro
Dispensing Systems



3 Unity PJ Series
Dispensing Systems



4 Unity™ IC Series
Dispensing Systems



5 Unity Controller
Systems



6 Unity™ Pre-warmer
Dispensing Systems



7 Unity™ Basic Series
Dispensing Systems



8 Unity™ Pro Series
Dispensing Systems

Vulcan Jet™ II Dispensing Systems

Replace traditional mechanical fasteners
and die-cut tape adhesives with advanced alternatives
to significantly enhance product designs

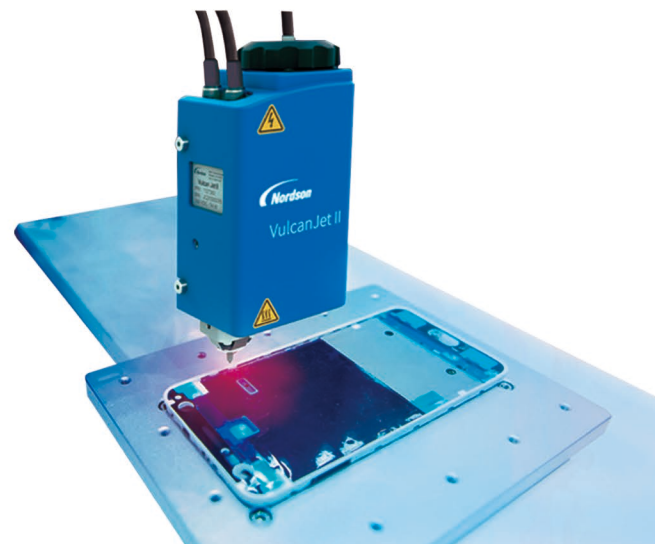
Features

- Consistent, low-variability small-dot dispensing**
 Replaces conventional fasteners and tapes
 Improves product designs, and reduces cost
- Extended seal life**
 Reduces maintenance & cost of ownership
 Increases production “up time”
- Smaller, with increased nozzle options**
 Simplifies production integration
 Dispenses in hard-to-reach areas



Advantages

- Advanced dispense management**
 Reduces adhesive stress
 Increases dispense and bond consistency
- Light-weight design**
 Supports rapid positioning
 Achieves “ready” status sooner
- Feature-rich, intuitive controls**
 Easy to use – reduces training needs
 Full production support



- At the heart of the Vulcan Jet™ II applicator is advanced piezo-based jetting technology, which enables ultra-high-speed jet dispensing of discrete, small adhesive dots with exceptionally low variability. The modular, easy-to-clean design features an innovative heating section combined with automatic pressure control to deliver consistent dispensing and bonding through precise temperature control and reduced adhesive heat stress.

Specifications

Vulcan Jet™ II Dispensing Systems

Weight (with bracket):	1.1 kg (2.4 lb)
Cabinet size:	10 in x 7.5 in x 8 in (254 mm x 191 mm x 203 mm)
Maximum fluid pressure:	3.45 bar (50 psi)
Heater output (setpoint range):	7.8° C to 170° C (100° F to 338° F)
Continuous cycle rate:	100Hz to 400Hz
Ambient temperature range:	0° C to 45° C (32° F to 113° F)

Electrical Specifications

Input voltage:	100-240 VAC, 1 phase, 50/60 Hz, 2.0 amps
Output voltage:	24VDC, 6.25 amps
Internal voltages:	150 VDC, 24 VDC, 3.3 VDC, 1.2 VDC
Nozzle body heater wattage:	40 watts
Syringe heater wattage:	43 watts
Nozzle and cartridge temperature sensing:	120 ohm nickel RTD

Available Options

- Syringe pre-warmer
- Variety of Unity™ tabletop automation systems
- Unity HiTemp™ disposable syringe barrels for PUR and other high temperature materials



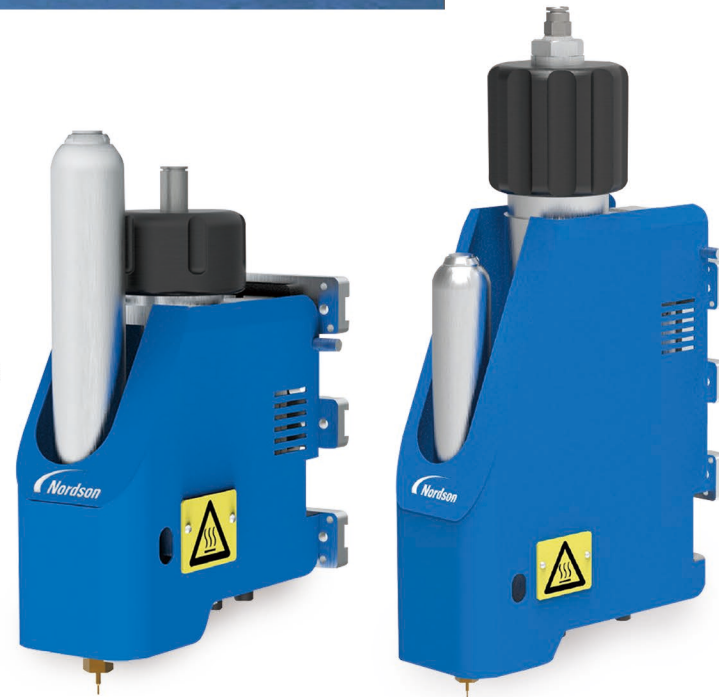
Specialized tools facilitate Vulcan Jet™ II maintenance

Pro-Meter® Micro Pump Dispensing Systems

Volumetric dispensing for industry-leading process control

Features

- Metering chamber provides market-leading deposit volume assurance for improved process control with minimal fluid waste
- Continuous volumetric dispensing independent of viscosity variation
- High precision fluid volume accuracy and repeatability



Advantages

- Versatility to continuously dispense any fluid viscosity with low pulsation and shear allows for use in a wide range of applications
- Modular design allows for easy disassembly and cleaning to reduce production downtime required for maintenance
- Suck-back feature provides clean cut-off for more accurate dispensing without dripping or drooling

Available Options

- Pre-warmers
- Variety of tabletop automation systems
- Variety of Saturn and nozzles from 25 gauge and larger



Specifications

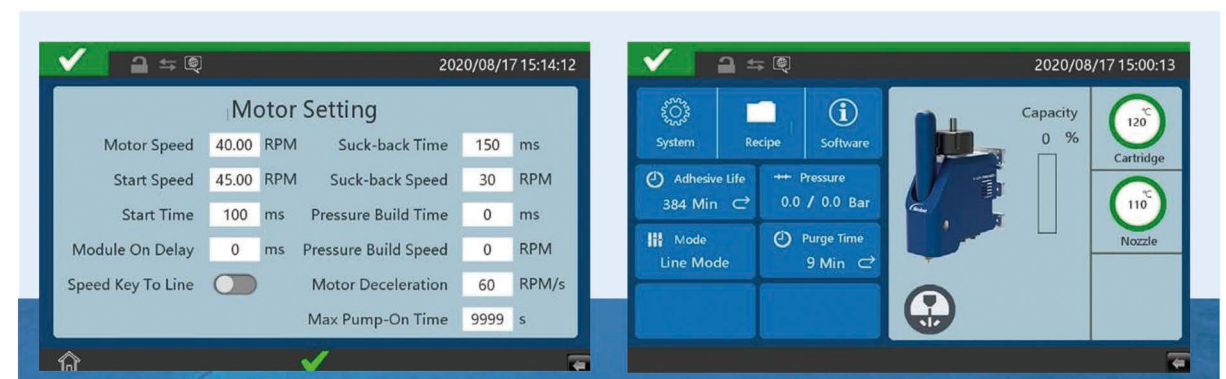
Pro-Meter® Micro Pump

Weight:	Pro-Meter Micro-30	2.7 kg (5.9 lb)
	Pro-Meter Micro-300	3.8 kg (8.4 lb)
Dimensions (WxDxH):	Pro-Meter Micro-30	88x148x217mm
	Pro-Meter Micro-300	95x175x338mm
Rotor Speed:	5-90 RPM	
Flow Rate:	Pro-Meter Micro-0.09	0.45-8.1 mL/min
	Pro-Meter Micro-0.12	0.6-12 mL/min
Dispensing Volume Per Revolution:	Pro-Meter Micro-0.09	0.09 mL
	Pro-Meter Micro-0.12	0.12 mL
Operating Temperature:	40°C-210°C (100F-410F)	

Pro-Meter® Micro Controller

Weight:	Controller: 5 kg (11 lb)
Dimensions (WxHxD):	Controller: 290x127x352mm
Communications:	Ethernet
Supply Voltage:	200-240 VAC, 1 phase, 50/60 Hz

PMM Dispensing Systems



Unity PJ30XT & PJ300XT Dispensing Systems

Precise, non-contact dispensing of heated materials from syringes

Features

- Patented jetting technology allows for consistent and accurate placement of adhesive without the need to adjust for change in the height of the substrate
- Accommodates a wide variety of hot melt materials including polyurethane (PUR)
- Dispenses discrete dots of adhesive that can be overlapped to create a precise bead of material
 - Capable of continuous cycles at 167 Hz
 - Improved jetting performance by reduced adhesive accumulation
 - Increased application flexibility with adjustable stroke



Advantages

- Eliminating the need for a consistent dispense gap removes the requirement for height sensors and the associated time spent on height measurements
- The PURJet 300XT applicators feature dual heating zones with precise temperature controls, which help extend the life of the adhesive. By maintaining a lower temperature in the cartridge while achieving the necessary application temperature in the manifold and module, these applicators ensure optimal performance and efficiency
- Long-life PJ30XT and PJ300XT applicators offer an affordable solution with fewer parts and less required maintenance, reducing long-term costs



Specifications

Unity PJ30XT & PJ300XT Dispensing Systems

Model:	Unity PJ30XT applicator	Unity PJ300XT applicator
Weight:	1.6 kg (3.4 lb)	3.36 kg (7.4 lb)
Adhesive viscosity:	Varies depending on nozzle size and flow rate	Varies depending on nozzle size and flow rate
Solenoid valve air flow:	15 scfm minimum	15 scfm minimum

Electrical Specifications

Model:	Unity PJ30XT applicator	Unity PJ300XT applicator
Supply voltage:	200-240 VAC, 1 phase, 50/60 Hz, 250 W (supplied from controller)	
Sensor type:	120 ohm nickel	200-240 VAC, 1 phase, 50/60 Hz, 400W (supplied from controller)
Applicator heater block:		200-240 VAC, 1 phase, 50/60 Hz, 250W (supplied from controller)



Available Options

- Pre-warmers
- Variety of Unity tabletop automations
- Modules/nozzles: 0.004" and 0.007"

Unity™ IC Series Dispensing Systems

Efficient and precise adhesive application for
electronics assembly

Features

- Pneumatic modules deliver consistent dispensing down to a 0.25 mm width
- Capable of utilizing heated and ambient materials
- Interchangeable nozzles allow for customized dispensing
- Cartridges allow for quick changeover and start-up maximizing production times



Advantages

- Operating costs are reduced by prolonging syringe life and minimizing bead width variation
- Dual heating zones in the IC30 2HC and IC 300-E applicator provide accurate heat temperature control
- Unique snuff-back module on the IC 300-E applicator delivers ultra-clean cutoff with no stringing

Available Options

- Pre-warmers
- Variety of Unity tabletop automation systems
- Variety of Saturn and Unity nozzles from 25 gauge and larger



Unity IC 30 2HC

Specifications

Unity IC Series Dispensing Systems

Unity IC 30 applicator

Weight:	1.6 kg (3.4 lb)
Adhesive viscosity:	Varies depending on nozzle size and flow rate
Solenoid valve air flow:	15 scfm minimum

Unity IC 30 2HC applicator

Weight:	1.6 kg (3.4 lb)
Adhesive viscosity:	Varies depending on nozzle size and flow rate
Solenoid valve air flow:	15 scfm minimum

Unity IC 300-E applicator

Weight:	3.28 kg (7.2 lb)
Adhesive viscosity:	Varies depending on nozzle size and flow rate
Solenoid valve air flow:	15 scfm minimum

Electrical Specifications

Unity IC 30 applicator

Supply voltage:	200-240 VAC, 1 phase, 50/60 Hz, 250 W (supplied from controller)
Sensor type:	120 ohm nickel or 100 ohm platinum

Unity IC 30 2HC applicator

Supply voltage:	200-240 VAC, 1 phase, 50/60 Hz, 250 W (supplied from controller)
Sensor type:	120 ohm nickel or 100 ohm platinum

Unity IC300 applicators

Supply voltage:	200-240 VAC, 1 phase, 50/60 Hz, 700 W (supplied from controller)
Sensor type:	120 ohm nickel

Unity™ C & Unity™ Touch S Control Systems

Multifunction controllers facilitate seamless system integration and ensure high precision in operations

Features

- Both controllers allow users to integrate fully with the parent machine to control parameters like temperature, pressure and applicator on/off time
- Both controllers enable users to gather data on the adhesive life of products and the quantity of dots jetted
- Low-level detection functionality (Unity Touch S only)
Standard ethernet communication (Unity Touch S only)
Inside air tank provides stable air supply (Unity Touch S only)
3 heating channels (Unity Touch S only)

Advantages

- Increase productivity and product quality with precise control of the adhesive dispensing process
- Higher yields and production quality lead to reduced production cost, material waste and total cost of ownership
- Analyze system data to reduce waste and maximize operation
- Consistent volume output of changing viscosity materials



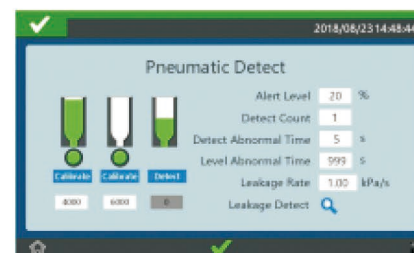
Unity C Controller



Unity Touch S Controller



Unity Touch S Controller UI



Specifications

Unity™ C & Unity™ Touch S Control Systems

Storage temperature:	-13° F (-25° C) to 158° F (70° C)
Temperature Sensor:	Ni 120
Max. input pressure:	8 bar
Degree of protection:	IP 43
Noise emission:	50 dBA

Min. ambient temperature:	0° C (32° F)
Max. ambient temperature:	35° C (95° F)
Humidity:	10 to 95%, not condensing
Min. operating temperature: (setpoint)	40° C (100° F)
Max. operating temperature:	230° C (446° F)

Unity™ C Controller

Communication:	12 pin I/O, RS232
Dimensions (W x D x H):	310 mm (W) x 245 mm (D) x 215 mm (H)
Weight:	6.5 kg (14.3 lb)

Unity™ Touch S Controller

Communication:	Ethernet
Dimensions (W x D x H):	Controller : 338.8 mm (W) x 214.75 mm (D) x 157.1 mm (H) Pneumatic box: 237 mm (W) x 62 mm (D) x 149.5 mm (H) Display: 211 mm (W) x 114 mm (D) x 188.35 mm (H)
Weight:	Pneumatic box: 1.6 kg (3.53 lb) Display: 1.9 kg (4.2 lb) Controller: 5.0 kg (11 lb)
Heating zone:	2 heating zones + 1 pre-warmer channel

Electrical Specifications

Available operating voltage:	200-240 VAC, 1 phase
Max power requirements:	6A
Operating voltage frequency:	50/60 Hz

Unity™ Pre-Warmer Automated Dispensing Systems

Hotmelt transitions from solid to liquid instantly while maintaining consistent performance

Features

- Precise temperature control up to ±0.2% accuracy
- Cartridges heat automatically when fluid levels are low (PW30-M and PW300-M)
- Auto-lock: prevents halfway heating (PW30-M and PW300-M)
- Touch-safe cover that helps prevent operator burns



Advantages

- Easily integrated into the automation system (PW30-M and PW300-M)
- Extends adhesive lifetime
- Efficient use of time enhances productivity



PW30-IV



PW300-II



PW30-M



PW300-M

Specifications

Unity™ Pre-Warmer Automated Dispensing Systems

Model	PW30-IV	PW300-II
Cartridge Size	30cc	300cc
Cartridge Pockets	4	2
Temperature Control Mode	Pt100	
Temperature Controller	Omron EE-SX670P	
Temperature Accuracy	±0.2%	
Pre-warmer Ready Time	15min	
Cartridge Temperature Ready Time	20min	40min
Weight	4.5kg	5kg
Dimension	340 x185 x 120 mm (13.4 x 7.3 x 4.7 in.)	
Power	200W	400W
Power Supply	110V or 220V	

Model	PW30-M	PW300-M
Cartridge Pockets	30cc	300cc
Temperature Control Mode	1	
Temperature Controller	Ni120	
Temperature Accuracy	Unity Touch S controller	
Pre-warmer Ready Time	15min	
Cartridge Temperature Ready Time	±0.2%	
Mechanical Locking System	20min	40min
Weight	3.1kg	5kg
Dimension	245 x 210 x 100 mm (9.6 x 8.26 x 3.9 in.)	340 x185 x 120 mm (13.4 x 7.3 x 4.7 in.)
Power	100W	200W
Power Supply	Unity Touch S controller	Unity Touch S controller

Unity™ Basic Series

Automated Dispensing Systems

Redefining tabletop automation

Features

- Simplified setup and programming via intuitive icon-based Teach Pendant**
 On-screen preview of the dispensing path facilitates programming
 Optional simple camera and UNITYMotion™ software make setup and programming intuitive
- Reinforced X axis (on Unity 4X) increases system rigidity and improved accuracy**
 X/Y/Z tip location alignment sensor available
 Upgradable to enhanced CCD vision camera with vision based bead compensation
- Easy-to-use .dxf file conversion to program path**
 Wide range of work envelopes
 Available in platforms ranging from 200 x 200 mm to 620 x 500 mm



Advantages

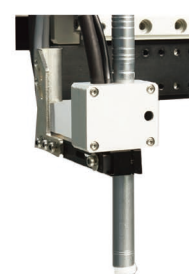
- The output of adhesive volume remains consistent even when dealing with materials of varying viscosity**
 (with enhanced CCD vision option)
- Easy-to-use visual programming means operators learn quickly**
 Easy integration into any manufacturing operation
 Faster cycle and batch times
- Automated tip alignment saves reprogramming time**

Available Options

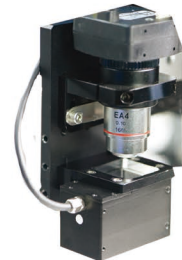
- Teach Pendant
- Simple Vision Kit
- CCD Vision Kit
- Tip Alignment Kit
- Tip Height Detection Kit



Optional Teach Pendant



Optional Simple Vision Kit



Optional CCD Vision Kit

Specifications

Model	Unity™ 3	Unity™ 4	Unity™ 4X	Unity™ 5	Unity™ 6
Number of Axes	3axes				
Maximum Working Area (X/Y/Z)	300/300/100mm (12/12/4 in.)	400/400/100mm (16/16/4 in.)	400/400/100mm (16/16/4 in.)	500/500/150mm (20/20/6 in.)	620/500/150mm (24/20/6 in.)
Workpiece Payload	10kg(21lb)	10kg(21lb)	10kg(21lb)	8kg(18lb)	10kg(21lb)
Tool Payload	5kg(11lb)	5kg(11lb)	8kg(11lb)	3.5kg(7.7lb)	5kg(11lb)
Maximum Speed (per second)	800/300mm (31/13 in.)	800/320mm (31/13 in.)	800/320mm (31/13 in.)	500/320mm (2/13 in.)	800/320mm (31/13 in.)
Unit Weight	39.5kg(87lb)	44.5kg(98lb)	45.5kg (100.3 lb)	47kg(107lb)	50kg(110.2lb)
Dimensions WxHxD	490x517x645mm (19x20x25 in.)	590x617x645mm (23x24x25 in.)	590x617x705mm (23x24x28 in.)	690x717x815mm (27x28x32 in.)	810x717x815mm (32x28x32 in.)

Electrical Specifications

Drive System	3-phase micro stepping motor
Memory	100 programs
Capacity	500~50,000 points/program
Data Storage	CF card, USB
General Purpose I/O	8 inputs/8 outputs (16/16 optional)
Drive Method	PTP and CP
Dispensing Controller	External
Power Supply	Auto-switching, 100-240 VAC, 200-320 W
Interpolation	3 axes (3D space)
Repeatability	±0.02 mm
Working Temperature	10-40 °C (50-104 °F)

Unity™ Pro Series Automated Dispensing Systems

A complete, vision-guided automation solution

Features

- UNITYMotion icon-based software simplifies setup and programming with advanced vision features
- Vision based bead compensation adjusts for changing viscosity materials
- On-screen preview of the dispensing path facilitates programming



Advantages

- Smart vision allows programming paths not possible with pendant based systems
- Better dispensing due to precise control over tip to substrate gap with laser height sensing capabilities
- The output of adhesive volume remains consistent even when dealing with materials of varying viscosity
- Higher yields and production quality lead to reduced production cost, material waste and cost of ownership

Available Options

- Laser Kits featuring clear and opaque surface reflective



Optional Laser Kit A

Specifications

Unity™ Pro Series Automated Dispensing Systems

Model	Unity U3XP PLUS	Unity 4XP	Unity U4XP PLUS	Unity U6XP PLUS
Number of Axes:	3axes	3axes	3axes	3axes
Max. Working Area (X/Y/Z):	250/300/100 mm (10/12/4 in.)	350/400/100 mm (14/16/4 in.)	350/400/100 mm (14/16/4 in.)	570/500/100 mm (22/20/4 in.)
Work piece payload:	25 kg(55 lb)	10 kg(22 lb)	25 kg(55lb)	25 kg(55 lb)
Tool Payload:	8 kg(18 lb)			
Maximum Speed:	500/300 mm/sec (20/12 in.)	500/250 mm/sec (20/10 in.)	500/250 mm/sec (20/10 in.)	500/250 mm/sec (20/10 in.)
Unit Weight:	55.5 kg(122 lb)	61 kg(134 lb)	66 kg(145 lb)	68 kg(150 lb)
Dimensions (WxDxH):	720x552x737.5 mm (28x22x29 in.)	820x652x737.5 mm (32x26x29 in.)	820x652x737.5 mm (32x26x29 in.)	860x752x737.5 mm (34x30x29 in.)

Electrical Specifications

Drive System:	5-Phase micro stepping motor
Memory Capacity:	PC storage
Data Storage:	PC storage
General Purpose I/O:	8 inputs/8 outputs (16/16 optional)
Drive Method:	PTP & CP
Power Supply:	Auto-switching, 100-240 V 380 W
Interpolation:	3 axes (3D space)
Repeatability:	±0.01 mm
Working Temperature:	10-40 °C
Teach Pendant:	---
Closed-loop Motor System:	Included
Tip Detection System:	Included
High-precision Vision:	Included
Laser Height Detection:	Optional

Versa Drum
Melter



VersaPUR
Melter



AltaPail
Melter



ProBlue Flex
Melter

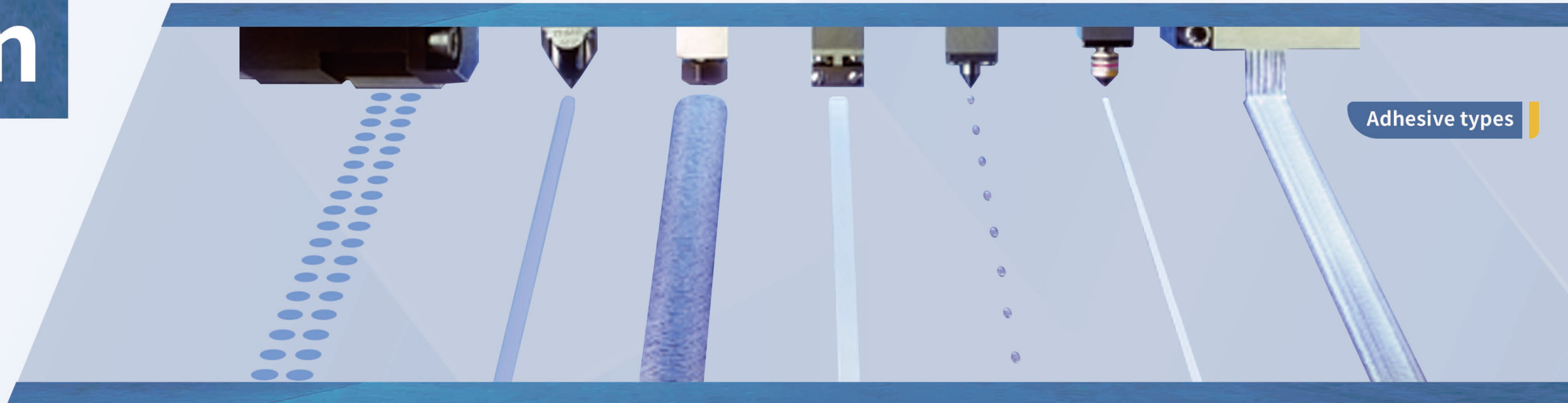


FoamMelt®
FIT25 Melter



Melter

Nordson Family More + Options



Adhesive types



TruFlow™ Flex
Flow Monitor Controller



PureFlow™
Hose



BluNet
Melter integration System



Fulfill®
Adhesive Storage Container

Accessories

