

## BKG® Cleaning Ovens JCP Type Jet Cleaner

### Summary

From 2006 to March of 2016, Siemens type TP 177A control panels were installed in the BKG® JCP Jet Cleaner cleaning ovens. Version TP177A was discontinued by the manufacturer on October 1, 2012, for the production process. On August 8, 2019 the product was discontinued by the manufacturer, i.e. the TP 177A is no longer available as a spare part.

However, the TP 177A can be replaced by the current KTP-700 version. The software of the old panel has been adapted to the new version and can therefore be exchanged 1-to-1.



We have compiled information on the two panels for you in the “Details and necessary steps” section.

This document informs you about the steps necessary to process spare parts orders for the new KTP-700 touch panel.

### Details and necessary steps

The new touch panel KTP-700 provides you with the following advantages:

- Larger 7-inch display with the same installation dimensions
- Higher image resolution of 800 x 480 pixels
- Larger internal memory up to 10 Mbytes
- External data storage via USB connection up to 16 GB
- Several languages preinstalled (German, English, Spanish and French)

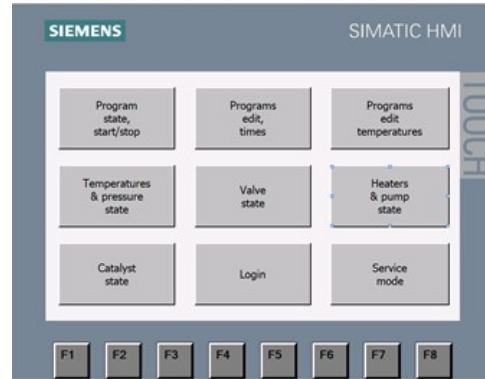
Technical Data	Old : TP 177A	New: KTP-700
Display diagonal	5.7 in	7 in
Display resolution	320 x 240 Pixel	800x480 Pixel
Interfaces / bus type	1x RS 422, 1x RS 485 (max. 1.5 Mbit/s)	1x RS 422/ RS 485 1x USB up to max. 16 GB
Ambient temperature in production	0 to 50°C (122°F)	0 to 50°C (122°F)
Relative air humidity	90%	90%
Number of online / run time languages	5	10
SIMATIC HMI MM memory card	no	USB up to max. 16 GB
Weight (without packaging)	0.75 kg (1.65 lb)	0.8 kg (1.76 lb)
Dimensions (width x height x length)	212 x 156 x 44 mm (8.35 x 6.14 x 1.73 in)	214 x 158 x 39 mm (8.43 x 6.22 x 1.54 in)
Installation section (width x height)	198 x 142 mm (7.8 x 5.6 in)	197 x 141 mm (7.76 x 5.55 in)

Table: Technical Data

View of the old TP 177A



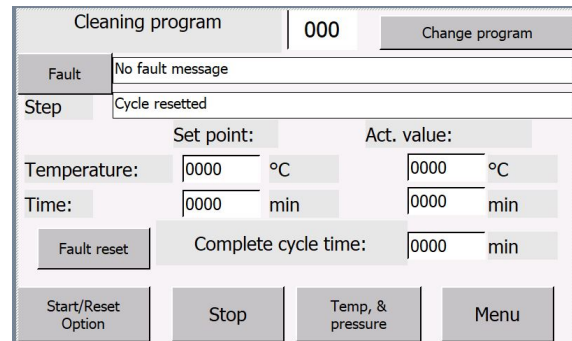
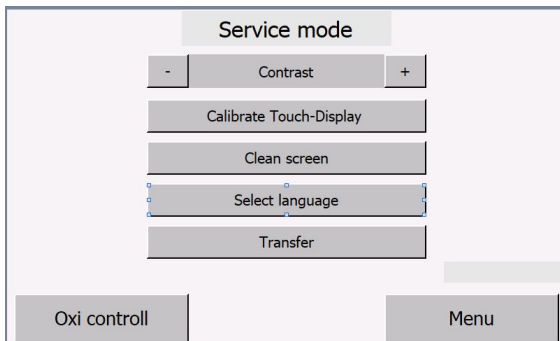
View of the new KTP-700



### Details on procurement of spare parts for the KTP-700 for existing systems

The article number XALEU300840 listed below includes the KTP-700 touch panel with the preinstalled software (see images below)

Article No.	Model Touch Panel	Spare Parts Delivery Status
<del>XALEU101071</del>	<del>TP-177A</del>	Product Discontinuation: Oct 1st, 2012 Product Obsolescence: Aug 8 <sup>th</sup> , 2018
<b>XALEU300840</b>	<b>KTP-700</b>	<b>Available as spare part</b>



### Execution of the necessary changes

The following options are available to you to make the necessary changes to your Jet Cleaner or to have them made:

1. Installation of the new KTP-700 touch panel and checking of the touch panel functions on your own
2. Exchange of the old TP 177A and installation of the new KTP-700, check the touch panel connection to the PLC function by a Nordson service technician at your site

#### NOTE!

Due to the different software versions of the TP 177A, it may be necessary to change the Profibus address to connect to the PLC control (S7-200) in the KTP-700. To do this, read chapter 5.17, page 67 in the Siemens KTP-700 manual (download link in the appendix)

### Your Nordson Contacts:

For any questions about this product:

Wolfgang Süß, Product Line Manager  
Email: [wolfgang.suess@nordson.com](mailto:wolfgang.suess@nordson.com)

For spare parts and services:

Nordson PPS Aftermarket Team  
Email: [aftermarket-pps@nordson.com](mailto:aftermarket-pps@nordson.com)

## Appendix

Download-Link Siemens KTP-700 Handbook:

English:

[https://support.industry.siemens.com/cs/attachments/90114350/HWBASICPanels2GenUS\\_en-US.pdf?download=true](https://support.industry.siemens.com/cs/attachments/90114350/HWBASICPanels2GenUS_en-US.pdf?download=true)

German

[https://support.industry.siemens.com/cs/attachments/90114350/HWBASICPanels2GdeDE\\_de-DE.pdf?download=true](https://support.industry.siemens.com/cs/attachments/90114350/HWBASICPanels2GdeDE_de-DE.pdf?download=true)

French

[https://support.industry.siemens.com/cs/attachments/90114350/HWBASICPanels2GfrFR\\_fr-FR.pdf?download=true](https://support.industry.siemens.com/cs/attachments/90114350/HWBASICPanels2GfrFR_fr-FR.pdf?download=true)

Spanish

[https://support.industry.siemens.com/cs/attachments/90114350/HWBASICPanels2GesES\\_es-ES.pdf?download=true](https://support.industry.siemens.com/cs/attachments/90114350/HWBASICPanels2GesES_es-ES.pdf?download=true)

Italian

[https://support.industry.siemens.com/cs/attachments/90114350/HWBASICPanels2GitIT\\_it-IT.pdf?download=true](https://support.industry.siemens.com/cs/attachments/90114350/HWBASICPanels2GitIT_it-IT.pdf?download=true)