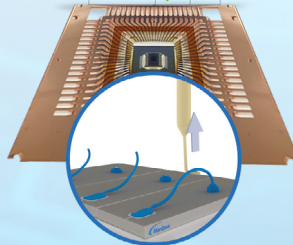
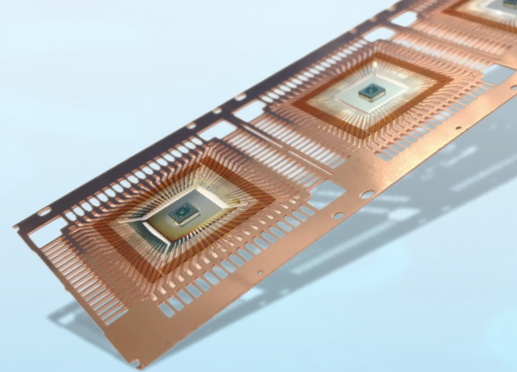


WIRE 7	✓	67
WIRE 2	✓	03
WIRE 5	✓	22



Test quality
Connects straight into your
factory network.



Electrostatic
Remove human & handling errors
from your production line.



Fast cycle times
No part indexing required.



4600-LF

Automated Lead Frame Bond Tester

Lead Frame Test Solution

Our automated handling lead frame indexer variant 4600 offers magazine mapping with strip load & unload capability. The 4600-LF is a completely automatic lead frame test solution that fits on a benchtop.

Automated Material Handling

Operator handled products introduce variability to the testing process. Strip placement is critical, without care it leads to damage or incorrect test results. The indexer of the 4600-LF accurately transfers the product safely to the bond tester, guaranteeing no human error. Simply place a magazine onto the handler, quick clamp it into place, and your product remains protected.

Maximum UPH

The 4600's rapid closed-loop XY axis reacts instantly. It moves to the test point faster than any operator. The large XY stage removes the need for product to be indexed. This needs a simple handling system to reduce maintenance and greatly increases product throughput!

Data Integrity

The future is big data and traceability, the 4600-LF is equipped with SECS/GEM. As standard it has automatic data upload to local area network servers powered by our Paragon™ software. Failure images, test videos and data are all linked back the instant a magazine is scanned & loaded.

Handling	
Lead frame / strip loading	Fully automatic, load from left
Magazine mapper	Detects cross-slotted strips or missing slots
Lead frame indexing	No indexing required, belt-fed
Magazine ID	Barcode / RFID option
Lead frame details	
Width	25 mm - 100 mm
Length	100 mm - 320 mm
Thickness	0.08 mm - 5 mm
Leadframe ID	Data matrix & manual input
Magazine dimensions	
No. of slots	1 - 40
Width	25 - 110 mm
Length	100 - 325 mm
Thickness	60 - 200 mm
Automation	
Automation modes	Dual camera-assisted automation
Strip map import	SINF, KLARF, G85 & ASCII format
Programming	Pattern transfer & file import
Light tower system	3 colour included as standard
Factory communication	Optional SECS / GEM, RS232
Axis Performance	
Step back accuracy (force dependent)	± 0.25 µm
System accuracy (force dependent)	± 0.10% - 0.05% FSL
Axis travel (X x Y x Z)	450 mm x 410 mm x 75 mm
XY speed and resolution	Up to 70 mm/s, 100 nm
Z speed and resolution	5 mm/s, 250 nm
Installation	
Footprint (W x D x H)	1075 mm x 920 mm x 1000 mm
Weight	140 kg
Power supply	90 - 264 V, AC single phase
Pneumatic supply	Min 4.0 Bar

For more information, speak with your Nordson representative or contact your Nordson regional office

Nordson Test & Inspection Europe, SEA, Africa
ti-sales-eu@nordson.com

Nordson Test & Inspection Americas
ti-sales-us@nordson.com

Nordson Test & Inspection China
ti-sales-cn@nordson.com

Nordson Test & Inspection Japan
ti-sales-jp@nordson.com

Nordson Test & Inspection Singapore
ti-sales-eu@nordson.com

Nordson Test & Inspection Taiwan
ti-sales-tw@nordson.com

Nordson Test & Inspection Korea
ti-sales-korea@nordson.com