

UltimusPlus Series Dispensers

Intuitive dispensing with NX protocol for Smart Factory integration



Experience market-leading usability with an intuitive touchscreen interface that simplifies setup and programming.



NX protocol via Ethernet allows programming from a personal computer or PLC.

Part #	Description
7364361	UltimusPlus I dispenser with NX, 0.7–7.0 bar (10–100 psi) pressure regulator
7364475	UltimusPlus I dispenser with NX, 0.7–7.0 bar (10–100 psi) pressure regulator, calibrated*
7364362	UltimusPlus II dispenser with NX, 0.02–1.0 bar (0.3–15 psi) pressure regulator
7364476	UltimusPlus II dispenser with NX, 0.02–1.0 bar (0.3–15 psi) pressure regulator, calibrated*
7014871	Kit, power cord**, American plug
7014872	Kit, power cord**, European plug

*Calibrated to EFD specifications based on NIST standards

**Order separately

Experience a new level of ease with Nordson EFD's UltimusPlus™ dispensers. Train operators in seconds with intuitive touchscreen control of dispensing parameters. Designed to simplify setup and operation, the UltimusPlus allows operators to focus on making accurate, controlled deposits. Improve process control with full operator lockout of time, pressure, and vacuum settings.

Boost productivity with an optional barcode scanner that allows you to alternate between 16 dispensing programs by scanning the barcode.

Automation-ready, the network-capable UltimusPlus dispenser allows direct communication with a Programmable Logic Controller (PLC) or other manufacturing plant controller using the NX (network connectivity) protocol via Ethernet. An internal Dispense Log automatically records dispense data and can be easily downloaded locally from a USB port or remotely from an FTP site for process verification to comply with regulatory approvals.

NX capability allows you to program and monitor all dispensing parameters directly from a PLC or computer, providing complete remote accessibility to save time and improve operational efficiency.

Features

- Electronic pressure regulation with full operator lockout
- MultiShot™ capability to dispense multiple shots from a single press of the foot pedal
- Web interface access from a tablet, PC, or mobile device
- Nordson NX Client Application included, Windows-based graphical user interface (GUI)

Benefits

- Improve process control with full operator lockout that prevents unauthorized changes
- Minimize cycle time and reduce operator fatigue by minimizing repetitive movements with MultiShot
- Improve operational efficiency and save time by programming and monitoring dispenser settings from a PLC or personal computer
- Support Smart Factory integration using Ethernet compatibility with NX protocol via TCP/IP
- Use client application for in-place troubleshooting and to simplify NX protocol implementation
- Reduce factory air consumption and operating costs with first-to-market Sleep Mode



more info



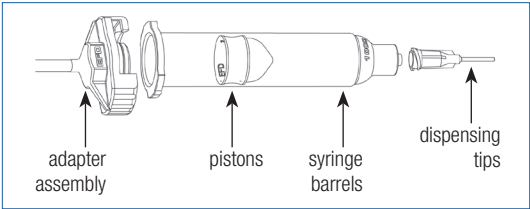
Specifications

Item	Specification
Cabinet size	21.2w x 10.8h x 19.2d cm (8.33w x 4.27h x 7.55d")
Weight	1.8 kg (4.0 lb)
Power adapter	AC input: 100–240 VAC (+/-10%), ~50/60 Hz, 0.6 Amp DC Output: 24 VDC @ 3.75 Amp
Cycle rate	Exceeds 600 cycles per minute
Time range	0.0001–999.9999 s
End-of-cycle feedback circuits	24 VDC; 100 mA maximum
Cycle initiate	Foot pedal, finger switch, 24 VDC signal, or mechanical contact closure
Input air pressure	UltimusPlus I: 5.5–7.0 bar (80–100 psi) UltimusPlus II: 1.7–2.4 bar (25–35 psi)
Air output	UltimusPlus I: 0.7–7.0 bar (10–100 psi) UltimusPlus II: 0.02–1.0 bar (0.3–15 psi)
Pressure readout accuracy	UltimusPlus I: ±0.14 bar (2.0 psi) UltimusPlus II: ±0.02 bar (0.3 psi)
Warranty	See manual
Approvals	CE, UKCA, TUV, RoHS, WEEE, China RoHS

Don't Forget to Order Your Components

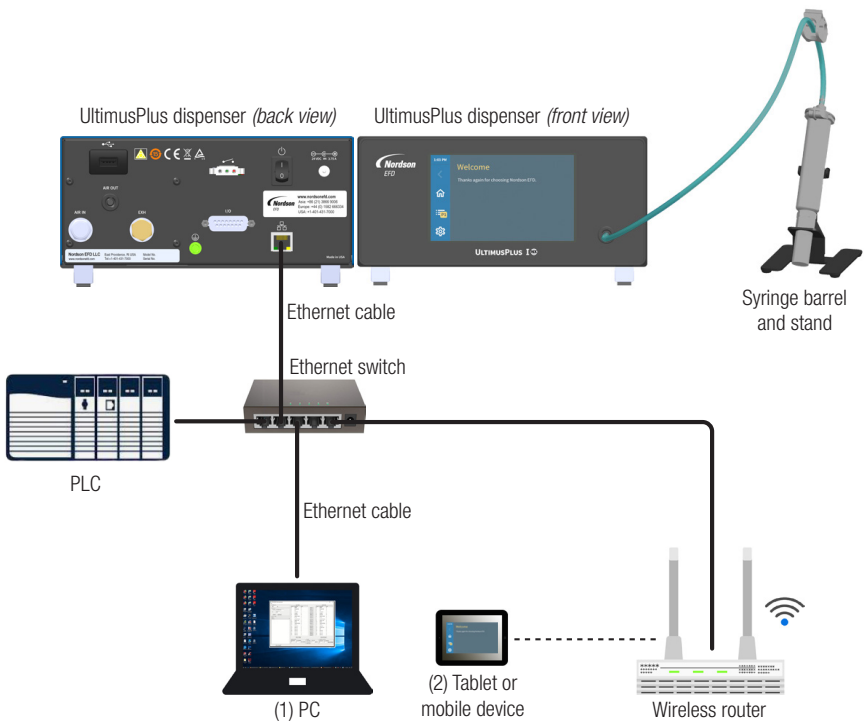
EFD Optimum® components are designed to work with your dispenser as part of a complete, integrated system that produces the most accurate, repeatable deposits possible.

- Adapter assembly
- Syringe barrels
- SmoothFlow™ pistons
- Dispensing tips
- Tip caps and end caps



Accessories

See the Dispenser Accessories data sheet for a complete list of optional accessories that will maximize the performance of your dispenser. Visit www.nordsonefd.com/DispenserAccessories for details.



Example setup for UltimusPlus dispenser connectivity:
(1) Nordson NX Client Application open on a PC
(2) NX web interface open on a tablet or mobile device



For Nordson EFD sales and service in over 40 countries, contact Nordson EFD or go to www.nordsonefd.com.

Global
800-556-3484; +1-401-431-7000, info@nordsonefd.com

Europe
00800 7001 7001, infoefd.europe@nordsonefd.com

Asia
China: +86 (21) 3866 9006; china@nordsonefd.com
India: +91 80 4021 3600; india@nordsonefd.com
Japan: +81 03 5762 2760; japan@nordsonefd.com
Korea: +82-31-736-8321; korea@nordsonefd.com
SEAsia: +65 6796 9522; sin-mal@nordsonefd.com