

Syringes for Equine Applications

Single and multi-dose packaging solutions



Dial-A-Dose and Posi-Dose syringes allow users to select exact dosing amount.



Posi-Dose is designed for oral dewormers.



Available in single and multi-dose options.

Nordson EFD offers a comprehensive selection of dosing syringes used in the treatment of horses and other animals.

Available in single or multi-dose options, EFD disposable animal health syringes are used to package medications, supplements, and a variety of other equine-related creams, gels, and pastes.

For multi-dose use, EFD Dial-A-Dose® syringes offer an innovative, customizable solution to tailor doses based on animal size, treatment schedule, and other requirements. The system's integrated ring allows users to "dial in" and administer the correct dose, and then securely reseal the syringe until its next use.

EFD's Posi-Dose® system is designed for oral deworming treatments. Its unique twist-lock ring snaps into position to set the specific dosing volume. And its nozzle-free design ensures positive confirmation that each dose is completely dispensed. Posi-Dose syringes can also be re-sealed for multi-dose use.

Other one-piece and two-piece plungers without the locking mechanism are also available.

Dial-A-Dose and Posi-Dose syringes safely package veterinary pharmaceuticals, nutritional supplements, and other equine products. Available in 6cc to 100cc volumes.

Features

- Range of sizes, colors, and nozzles
- Self-venting barrels with "lead-in" aid for easy fill

Benefits





- Dial-A-Dose and Posi-Dose allow veterinarians or owners to dose the horse, cap the syringe, and save for next dose
- Locking ring ensures exact amount is dispensed
- Faster and easier to repeat dose than other syringes
- Different nozzles to easily dispense any material viscosity for oral and topical applications



more info



Syringe Systems for Equine Applications

| EQUINE SYRINGE SYSTEMS | | | | | | | | |
|---|----------|-------|----------|-------|---------|----------------------------|-----------------------------|-----------|
| Syringes include integrated molded nozzle. Order plungers and caps separately. White caps molded in LDPE. | | | | | | | | |
| Nozzle Style: Standard Oral 3/16" ID x 1-13/32" Length | | | | | | | | |
|  | | | | | | Multi-Dose Plunger Options | Single-Dose Plunger Options | |
| | Syringe | Size | Material | Color | Cap | Dial-A-Dose | One-Piece | Two-Piece |
| | 7660313 | 15cc | PE | White | 7660198 | 7660343 | 7660329 | 7660333 |
| | 7660399 | 32cc | PE | White | 7660198 | 7660452 | — | 7660436 |
| | 7660571 | 100cc | PP | Clear | 7660198 | 7660580 | — | 7660581 |
| Nozzle Style: Posi-Dose 25/64" ID | | | | | | | | |
|  | Syringe | Size | Material | Color | Cap | Dial-A-Dose | One-Piece | Two-Piece |
| | 7660282* | 6cc | PE | White | 7660206 | — | — | — |
| | | | | | | | | |
| Nozzle Style: Medium Oral 9/32" ID x 1-13/32" Length | | | | | | | | |
|  | Syringe | Size | Material | Color | Cap | Dial-A-Dose | One-Piece | Two-Piece |
| | 7660419 | 32cc | PE | White | 7660207 | 7660452 | — | 7660436 |
| | 7660482 | 34cc | PE | White | 7660207 | 7660452 | — | 7660436 |
| Nozzle Style: Wide Oral 13/32" ID x 1-5/16" Length | | | | | | | | |
|  | Syringe | Size | Material | Color | Cap | Dial-A-Dose | One-Piece | Two-Piece |
| | 7660522 | 60cc | PE | White | 7660191 | 7660538 | — | 7660528 |
| | 7660553 | 80cc | PE | White | 7660191 | — | — | 7660938 |
| | 7660572 | 100cc | PE | White | 7660191 | 7660580 | — | 7660581 |

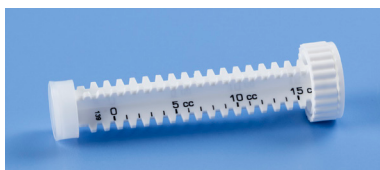
*Note: Posi-Dose plunger included with syringe.

Standard Multi-Dose Plungers

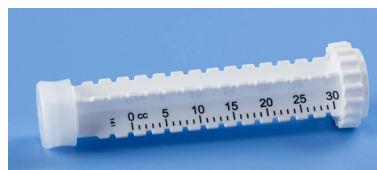
Choose a Dial-A-Dose or Posi-Dose plunger for measured multi-dose use. Sample plunger calibration marks shown below. Custom colors and calibrations available.



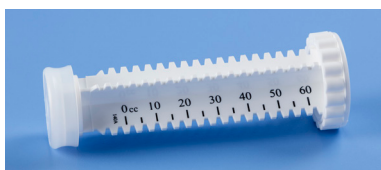
6cc Posi-Dose plunger



15cc Dial-A-Dose plunger



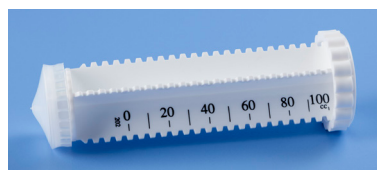
30cc Dial-A-Dose plunger



60cc Dial-A-Dose plunger



80cc Dial-A-Dose plunger



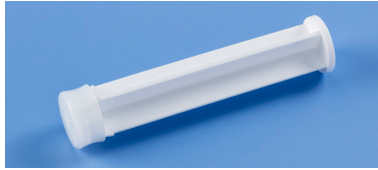
100cc Dial-A-Dose plunger

Standard One- and Two-Piece Plungers

Choose a one-piece or two-piece plunger when measured doses aren't required. One-piece plungers feature integrally-molded seals, while two-piece plungers allow more flexibility for different fluids. Both styles retract easily to eliminate drip and drool, and maximize product use.



One-piece plunger



Two-piece plunger



EFD

For Nordson EFD sales and service in over 40 countries, contact Nordson EFD or go to www.nordsonefd.com.

Global

800-556-3484; +1-401-431-7000
info@nordsonefd.com

Europe

00800 7001 7001
infoefd.europe@nordsonefd.com

Asia

China: +86 (21) 3866 9006; china@nordsonefd.com
India: +91 80 4021 3600; india@nordsonefd.com
Japan: +81 03 5762 2760; japan@nordsonefd.com
Korea: +82-31-736-8321; korea@nordsonefd.com
SEAsia: +65 6796 9522; sin-mal@nordsonefd.com

©2024 Nordson Corporation 120224