

# Syringes for Equine Applications

Single and multi-dose packaging solutions



Dial-A-Dose and Posi-Dose syringes allow users to select exact dosing amount.



Posi-Dose is designed for oral dewormers.



Available in single and multi-dose options.

Nordson EFD offers a comprehensive selection of dosing syringes used in the treatment of horses and other animals.

Available in single or multi-dose options, EFD disposable animal health syringes are used to package medications, supplements, and a variety of other equine-related creams, gels, and pastes.

For multi-dose use, EFD Dial-A-Dose® syringes offer an innovative, customizable solution to tailor doses based on animal size, treatment schedule, and other requirements. The system's integrated ring allows users to "dial in" and administer the correct dose, and then securely reseal the syringe until its next use.

EFD's Posi-Dose® system is designed for oral deworming treatments. Its unique twist-lock ring snaps into position to set the specific dosing volume. And its nozzle-free design ensures positive confirmation that each dose is completely dispensed. Posi-Dose syringes can also be re-sealed for multi-dose use.

Other one-piece and two-piece plungers without the locking mechanism are also available.

Dial-A-Dose and Posi-Dose syringes safely package veterinary pharmaceuticals, nutritional supplements, and other equine products. Available in 6cc to 100cc volumes.

## Features

- Range of sizes, colors, and nozzles
- Self-venting barrels with "lead-in" aid for easy fill

## Benefits






- Dial-A-Dose and Posi-Dose allow veterinarians or owners to dose the horse, cap the syringe, and save for next dose
- Locking ring ensures exact amount is dispensed
- Faster and easier to repeat dose than other syringes
- Different nozzles to easily dispense any material viscosity for oral and topical applications



more info



## Syringe Systems for Equine Applications

EQUINE SYRINGE SYSTEMS								
Syringes include integrated molded nozzle. Order plungers and caps separately. White caps molded in LDPE.								
Nozzle Style: Standard Oral 3/16" ID x 1-13/32" Length								
					Multi-Dose Plunger Options		Single-Dose Plunger Options	
	Syringe	Size	Material	Color	Cap	Dial-A-Dose	One-Piece	Two-Piece
	7660313	15cc	PE	White	7660198	7660343	7660329	7660333
	7660369	30cc	PE	Black	7660198	—	7660380	—
	7660399	32cc	PE	White	7660198	7660452	—	7660436
	7660571	100cc	PP	Clear	7660198	7660580	—	7660581
Nozzle Style: Posi-Dose 25/64" ID								
	Syringe	Size	Material	Color	Cap	Dial-A-Dose	One-Piece	Two-Piece
	7660282*	6cc	PE	White	7660206	—	—	—
Nozzle Style: Medium Oral 9/32" ID x 1-13/32" Length								
	Syringe	Size	Material	Color	Cap	Dial-A-Dose	One-Piece	Two-Piece
	7660419	32cc	PE	White	7660207	7660452	—	7660436
	7660482	34cc	PE	White	7660207	7660452	—	7660436
Nozzle Style: Medium Oral 1/4" ID x 1-23/64" Length								
	Syringe	Size	Material	Color	Cap	Dial-A-Dose	One-Piece	Two-Piece
	7660552	80cc	PE	White	7660207	7660557	—	7660938
Nozzle Style: Wide Oral 13/32" ID x 1-5/16" Length								
	Syringe	Size	Material	Color	Cap	Dial-A-Dose	One-Piece	Two-Piece
	7660522	60cc	PE	White	7660191	7660538	—	7660528
	7660553	80cc	PE	White	7660191	7660557	—	7660938
	7660572	100cc	PE	White	7660191	7660580	—	7660581

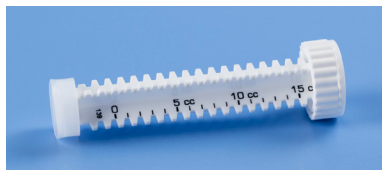
\*Note: Posi-Dose plunger included with syringe.

## Standard Multi-Dose Plungers

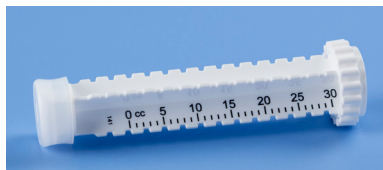
Choose a Dial-A-Dose or Posi-Dose plunger for measured multi-dose use. Sample plunger calibration marks shown below. Custom colors and calibrations available.



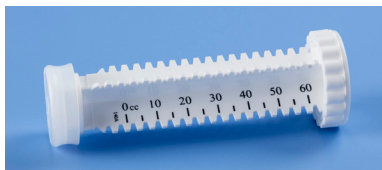
6cc Posi-Dose plunger



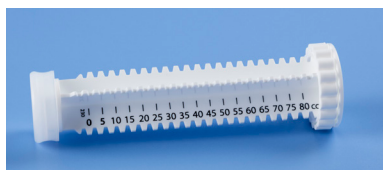
15cc Dial-A-Dose plunger



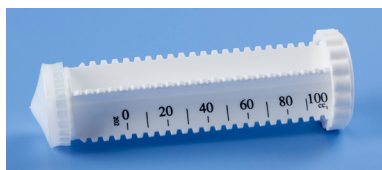
30cc Dial-A-Dose plunger



60cc Dial-A-Dose plunger



80cc Dial-A-Dose plunger



100cc Dial-A-Dose plunger

## Standard One- and Two-Piece Plungers

Choose a one-piece or two-piece plunger when measured doses aren't required. One-piece plungers feature integrally-molded seals, while two-piece plungers allow more flexibility for different fluids. Both styles retract easily to eliminate drip and drool, and maximize product use.



One-piece plunger



Two-piece plunger



For Nordson EFD sales and service in over 40 countries, contact Nordson EFD or go to [www.nordsonefd.com](http://www.nordsonefd.com).

**Global**

800-556-3484; +1-401-431-7000  
[info@nordsonefd.com](mailto:info@nordsonefd.com)

**Europe**

00800 7001 7001  
[infoefd.europe@nordsonefd.com](mailto:infoefd.europe@nordsonefd.com)

**Asia**

China: +86 (21) 3866 9006; [china@nordsonefd.com](mailto:china@nordsonefd.com)  
India: +91 80 4021 3600; [india@nordsonefd.com](mailto:india@nordsonefd.com)  
Japan: +81 03 5762 2760; [japan@nordsonefd.com](mailto:japan@nordsonefd.com)  
Korea: +82-31-736-8321; [korea@nordsonefd.com](mailto:korea@nordsonefd.com)  
SEAsia: +65 6796 9522; [sin-mal@nordsonefd.com](mailto:sin-mal@nordsonefd.com)