

BKG® HyFlex™ Diverter/Discharge Valves

Function

Start-up position: The material is diverted and discharged out of the process into a catch pan

Production position: The melt flow is guided to the downstream components

Processes

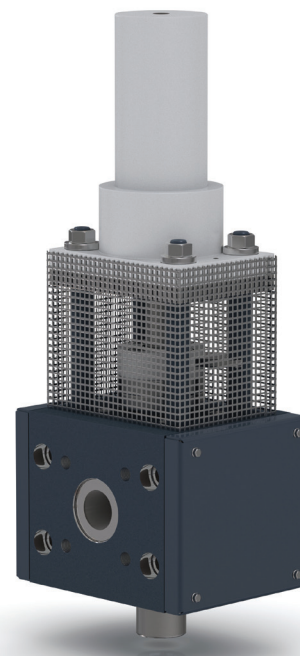
Safety valve for reaction, compounding and extrusion processes

Features

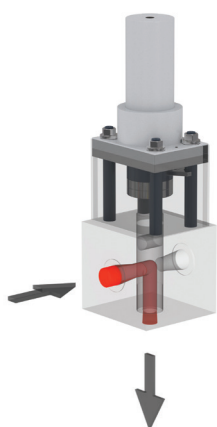
- Optimized flow channels utilizing rheological data
- Wear-free metallic sealing system - no additional seal required
- Easily integrated into the line controls
- Highly customized solutions available
- Proven piston type design
- Additional shut-off position is optional

Benefits

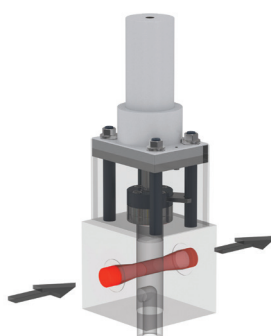
- Automated and simple start-up
- Constant melt flow directly at the start-up
- Safe discharge of contaminated material
- Fast separation of the processes in case of failures



Functional principal



Start-up position



Production position

Nordson BKG GmbH
Hessenweg 3-5
48157 Münster / Germany
Phone +49.251.26501.0

USA
Phone +1.828.326.9888

China
Phone +86.21.5785.091.8

Japan
Phone +81.3.5762.2770



nordsonpolymerprocessing.com | info@nordsonpolymerprocessing.com

BKG is a trademark of Nordson Corporation,
registered in the United States and other countries.

© 2021 Nordson BKG GmbH
Printed in USA
04/2021