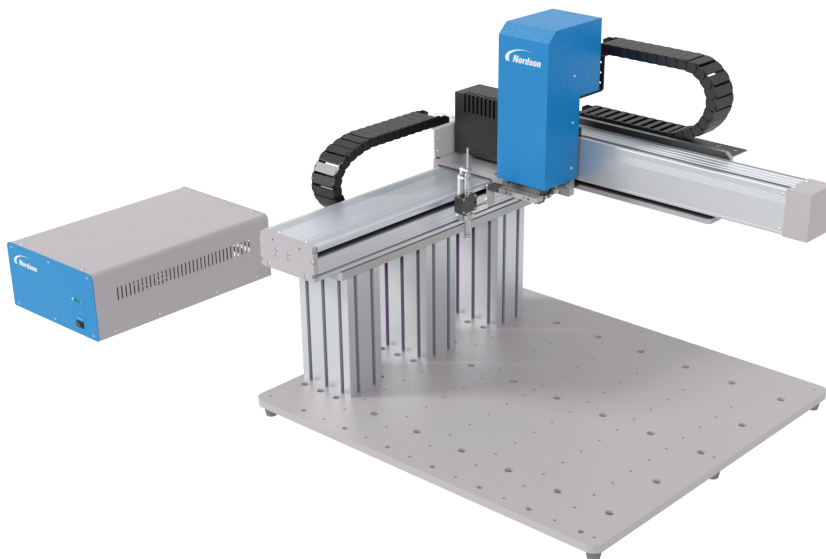


Unity™ Gantry

Automated Dispensing Systems

A complete automated gantry system with vision for precise fluid application



The vision-guided gantry series system is engineered for precise hot melt dispensing using Nordson Unity dispensing systems.

Specialized UNITYMotion™ software and integrated vision capabilities make Unity automated systems easy to quickly set-up and program. The precise three-dimensional motion control provides easy programming of dots, lines, circles, arcs, and compound arcs.

Working envelopes can reach up to 800 mm: making them an optimum solution for precise fluid dispensing onto substrates that require large work envelopes while not sacrificing repeatability.

Features

- Simplified setup and programming with Nordson's advanced vision-guided UNITYMotion™ software
- On-screen preview of the dispensing path, which facilitates programming
- True, three-dimensional motion control
- Work envelopes as large as 800 mm (possible to be 1200mm)
- Unlimited workpiece payload

Benefits

- Market-leading dimensional positioning accuracy and deposit placement repeatability
- Faster cycle and batch times
- Easier to set up and program quickly
- Seamless integration into any manufacturing operation
- Reduced production, material, and ownership costs



Specifications

Model	Unity G4V	Unity 8080
Number of Axes	3 axes	
Maximum Working Area (X/Y/Z/U)	400/400/100 mm (15.7/15.7/3.9 in.)	800/800/100 mm (31.5/31.5/3.9 in.)
Load Tool	3 kg (6.6 lb)	8 kg (17.6 lb)
Maximum Travel Speed (XY/Z)	500/320 mm/sec (19.7/12.6 in./sec)	800/320 mm/sec (31.5/12.6 in./sec)
Unit Weight (Including Control Box)	63.5 kg (140 lb)	95 kg (209 lb)
Dimensions (WxDxH)	833x760x560.5 mm (32.8x29.9x22.1 in.)	1480x1060x520 mm (58.3x41.7x20.5 in.)
Dimensions (Control Box) (WxDxH)	285x460x160 mm (11.2x18.1x57.5 in.)	
Memory Capacity	PC Storage	
Data Storage	PC Storage	
I/O Signal	8 inputs/8 outputs	
Action Method	PTP and CP	
Stepper Motor	5-Phase	XY Axis: Servo Motor Z Axis: 5-Phase Micro
Power Supply	Auto-switching, AC100–240 VAC, 420W	AC220V, 470W
Interpolation	3 axes (3D space)	
Repeatability	±0.02 mm (0.0008 in.)	±0.1 mm (0.0004 in.)
Working Temperature	10–40° C (50–104° F)	

Note

- The travel speed will be changed for different dispensing path and loading.
- The robot loading will be changed according to dispensing path and travel speed.

For more information, speak with your Nordson representative or contact your Nordson regional office.

United States

Duluth, Georgia
(800) 683-2314 **Phone**
(866) 667-3329 **Fax**

Canada

Markham, Ontario
(800) 463-3200 **Phone**
(905) 475-8821 **Fax**

Europe

Erkrath, Germany
(49) 211-9205-0 **Phone**
(49) 211-254658 **Fax**

Japan

Tokyo, Japan
(81) 3-5762-2710 **Phone**
(81) 3-5762-2717 **Fax**

Asia/Australia/ Latin America

Amherst, Ohio
(440) 985-4797 **Phone**
(440) 985-1096 **Fax**

Find us on:



Issued 06/20
© 2020 Nordson Corporation
All Rights Reserved.
Printed in U.S.A.
Nordson reserves the right to
make design changes between
printings.