

Count on us™



Assure™ Series

X-ray Component Counters

www.nordson.com/TestInspect

Nordson
TEST & INSPECTION

Nordson TEST & INSPECTION

Founded in 1954, Nordson Corporation is a market leading industrial technology company with annual revenues of over \$2.1 billion and more than 7,500 employees worldwide.

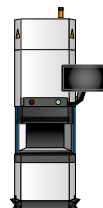
Nordson TEST & INSPECTION offers its SMT & Semiconductor customers a robust product portfolio, including Acoustic, Optical and both Manual and Automated X-ray Inspection systems, X-ray Component Counting systems and Semiconductor measurement sensors. Nordson TEST & INSPECTION is uniquely positioned to serve its customers with best-in-class precision technologies, passionate sales and support teams, global reach, and unmatched consultative applications expertise.

Exceptional support
from Nordson's worldwide network

CC Products

Count On Us™

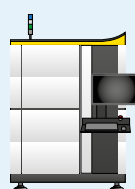
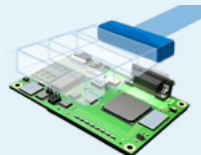
X-ray Component Counting



AXI Products

High Speed High Flexibility

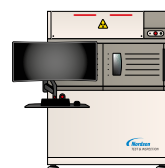
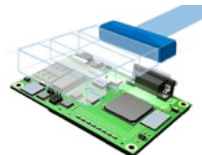
Automated
X-ray Inspection



MXI Products

Making the Invisible, Visible

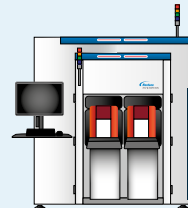
Manual
X-ray Inspection



AXM Products

Measuring the Invisible

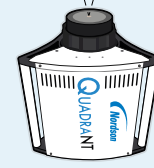
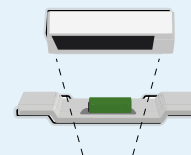
Automated
X-ray Metrology



XRT Products

High Speed High Resolution

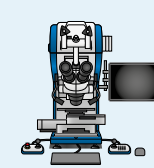
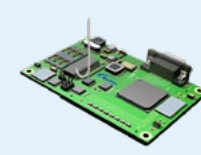
X-ray
Technologies



BT Products

Test Your Design

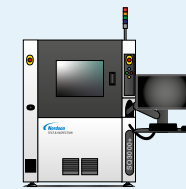
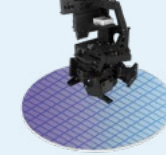
Bondtesters



AOI Products

Proprietary Advanced Technology

Optical Inspection
& Metrology



WS Products

Improve Your Yields

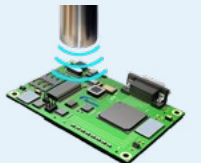
Semiconductor
Metrology Sensors



AMI Products

Qualify Your Design

Acoustic
Inspection



Live Inventory

**The correct material in the correct quantity,
at the right time in the right place.**

Inventory knowledge is essential for modern industry. Whether you are a SMT manufacturer, component supplier or broker, live assurance of correct inventory in your MRP system at all times minimizes stock, labor, errors and costs ensuring customer confidence and trust. Whether you are a small contract manufacturer or a large OEM, keep your SMT lines running.

Ensure your production is smooth running and cost efficient with Assure™.

“A Line-Down means you are not producing. It’s not about counting components that cost a penny, it’s about preventing the line from stopping because you’re missing a component worth a penny”.



Your Live Inventory Solution

Assure™ is the most reliable way to implement live component inventory management into your organization. Intelligent, simple, fast, and trustworthy, Assure enables you to increase productivity and minimize component shortage downtime.

Intelligent

Specialized logical algorithms and self-learning capabilities empower operators to add (not teach) new component types without needing cumbersome libraries that require programming, or reliance on “cloud-only” support.

Simple

One button operation and an intuitive touchscreen interface means users can learn to operate Assure within minutes. Installation is easy with an exceptionally small footprint and system weight. Maintenance free operation minimizes disruption during day to day use.

Fast

Optimized for speed, Assure Pro counts components fast so you can process inventory sooner, and minimize labor time and cost. Count a single reel in as little as 8 seconds, and four reels in as little as 11 seconds. Assure Pro includes an integrated barcode reader to further increase your counting speed.

Trust

If a result should be off, Assure will detect this and notify the operator.



Industry 4.0

Save time and guarantee precise, live inventory knowledge within the factory by interfacing Assure™ to your ERP, MRP, pick and place and storage systems.

Is your storage system already integrated with your MRP? Assure communicates with a range of popular automated storage solutions which relay component counts on to MRP.

Connect Assure with your pick and place equipment to ensure sufficient material is loaded to complete each production cycle.

Automatically monitor reel handling component loss. Assure compares components counted with those issued by the pick and place equipment.



Intelligence As Standard

Plug and Play

Be up and running fast. Assure™ uses advanced algorithms to identify new components and does not rely on libraries or require a connection to the cloud.

A true plug-and-play solution, Assure is fully functional within a few hours of arriving.

Automatic Barcode Detection

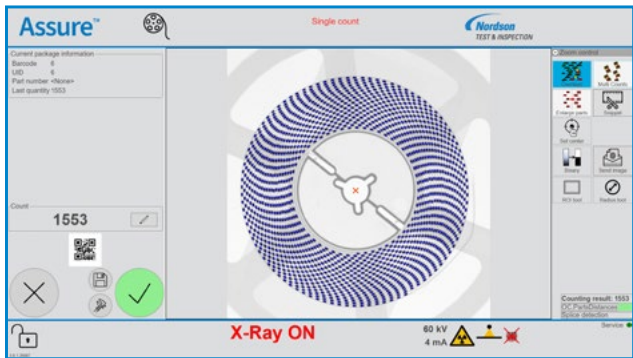
Eliminate the risks of operator barcode scanning. Auto barcode allows you to teach Assure the specific barcode formats used in your operation so other barcodes cannot be entered in error. Auto barcode automatically prompts the operator for the correct barcode should more than one match the format.

Work Order Specific Group Counting

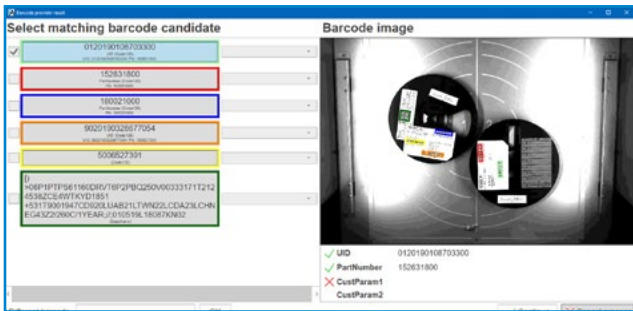
Group inventory counts together per Work Order assignments, even in Quad Count mode.

Generate result reports for the complete group, categorized by part numbers.

Ensure all materials in the group are counted at the same time.



Intuitive touchscreen user interface.



Multi-barcode handling and automatic camera based detection.

Configurable Reporting

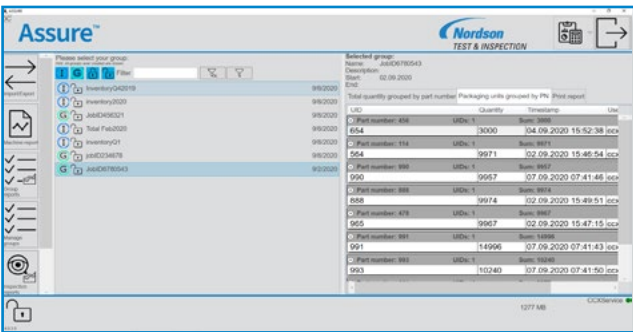
Powerful reporting allows you to export master and result data or monitor machine usage. Reports are easily configured and can be created in a variety of output formats including CSV, XML, JSON and PDF.

Data Import

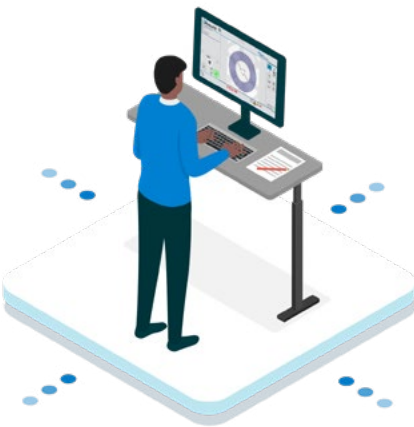
Easily import useful data information about production, such as UID and Part numbers. Automatically link UID, customer part numbers, and manufacturing numbers during a programmable import schedule for complete traceability of each cycle.

Remote Control Station

Complete monitoring and control away from the line, the Remote Control Station allows you administration access to Assure, and access to all features: review results, algorithm teaching, machine settings, user settings and radiation safety officer settings.



Easy reporting of groups of materials, ideal for customer consignment inventory.



Assure remote control station.

Assure Connectivity Pack

Count on us™

Depending on requirements, Assure can be expanded with a Data Connectivity Pack. The Assure includes versatile tools for barcode identification and data import & export to/from text files as a standard. If required, the Connectivity Pack adds even more powerful facilities on top of that.

Standard System Integrators

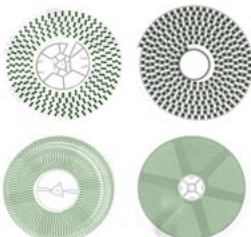

Synchronous connectors to common 3rd party systems. Data connectors are available for a range of different target systems, like ASMP MaterialManager, Cogiscan, Mycronic MyData, JUKI and Essegi ISM/IMS and many more. These seamlessly integrate component counting into your materials workflows.

Assure API

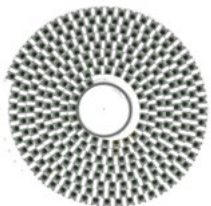
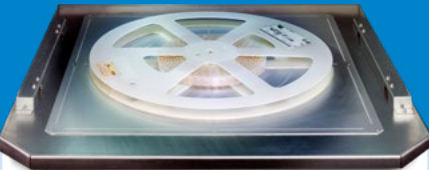
The Assure API (Application Programming Interface) is a RESTful web service, offering a simple and flexible interface for exchanging data or receiving live machine status updates, thus enabling our customers to develop their own system integration.

	Assure	Assure Pro
Integrated code reader		✓
Manual Barcode Reader	✓	✓
Label Printer	✓	✓
Data Import/Export	✓	✓
API		✓
Standard System Integration		✓

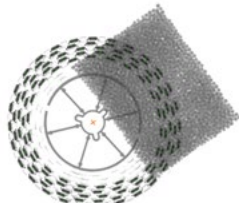

Quad reel count



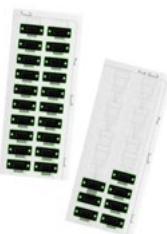

Single and spliced reel count




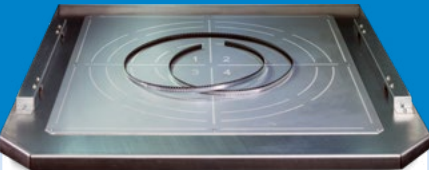
ESD and moisture sensitive bags




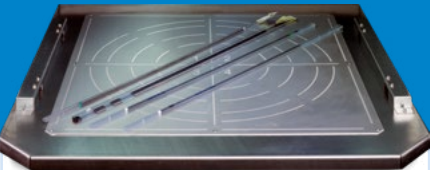
Trays

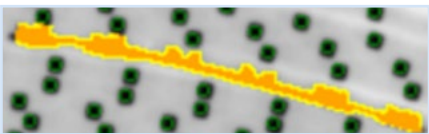
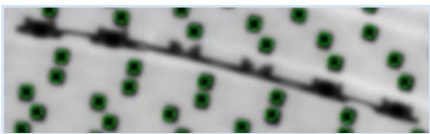


Loose belt/tape



Tubes





Tape splice detected automatically.

Specifications

Assure™		Assure™ Pro	
Performance			
Maximum reel diameter	43 cm / 17"		
Maximum reel height	10 cm / 4"		
Processing time:	~ 10s single reel		
Accuracy	Quad count < 15s (any combination of 7" reels)		
Minimum component size	> 99.9 % (most components)		
Barcode tracking	01005		
	Manual scan		Automatic integrated barcode scan
Installation			
Footprint	(W x D x H) 0.76 m x 0.88 m x 2.36 m / 30" x 34" x 93"		
Weight	360 kg / 790 lbs		370 kg / 820 lbs
Power	~ 110...230V, 16 A, 50/60 Hz		
Max. power consumption	1000 W		1000 W
Grounding	0.75 mm² (via main power supply)		
Noise emission	< 60 dB		
Operating temperature/humidity	15 °C to 28 °C / 30 -70% non condensing		
ESD	DIN EN 61340-5-1		
Shielding	<0.5 µSv / hour 5 cm from surface, meets all international standards		
Software			
Operating system	Win 10 Enterprise LTSC		
Application software	ASSURE.Shell		
Flat Panel Detector			
Pixel area / Active area	43 x 43 cm (17" x 17")		
Resolution	139 µm (3.6 lp / mm)		
X-Ray Module			
Power / Voltage / Current	240 W / 60 kV / 4 mA		

For more information, speak with your Nordson representative or contact your Nordson regional office

Nordson Test & Inspection Europe, SEA, Africa
ti-sales-eu@nordson.com

Nordson Test & Inspection Americas
ti-sales-us@nordson.com

Nordson Test & Inspection China
ti-sales-cn@nordson.com

Nordson Test & Inspection Japan
ti-sales-jp@nordson.com

Nordson Test & Inspection Singapore
ti-sales-eu@nordson.com

Nordson Test & Inspection Taiwan
ti-sales-tw@nordson.com

Nordson Test & Inspection Korea
ti-sales-korea@nordson.com



Specifications subject to change without prior notice.
Copyright © Nordson 2024. Other products and company names mentioned are trademarks or trade names of their respective companies.

Nordson TEST & INSPECTION products are patent protected and covered by the patent listed at www.nordson.com.

BR-XRCC-25/03/2024-V1