

CORDIS™ VT Powder Feed Center

With a world-class team driving innovation, Nordson reimagined the powder feed center from the ground up. The result is CORDIS™ VT—a platform engineered for smooth, reliable, and consistent performance that brings automatic systems into perfect rhythm.

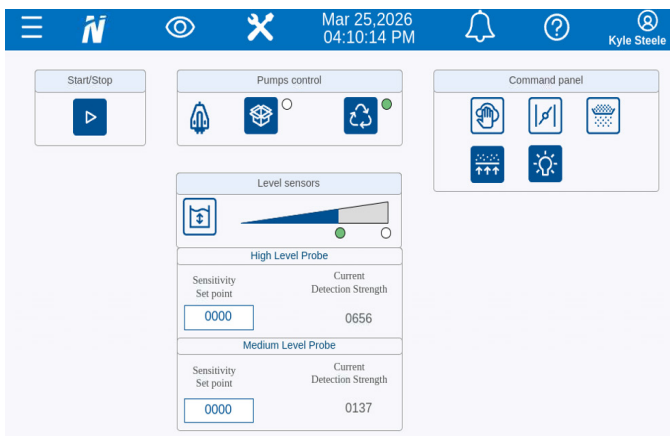
REDEFINING COATING FLEXIBILITY

CORDIS™ features a compact footprint and fully ambidextrous layout, making it easy to integrate into a variety of line configurations. As your operation evolves, CORDIS adapts—ensuring long-term system efficiency and performance.



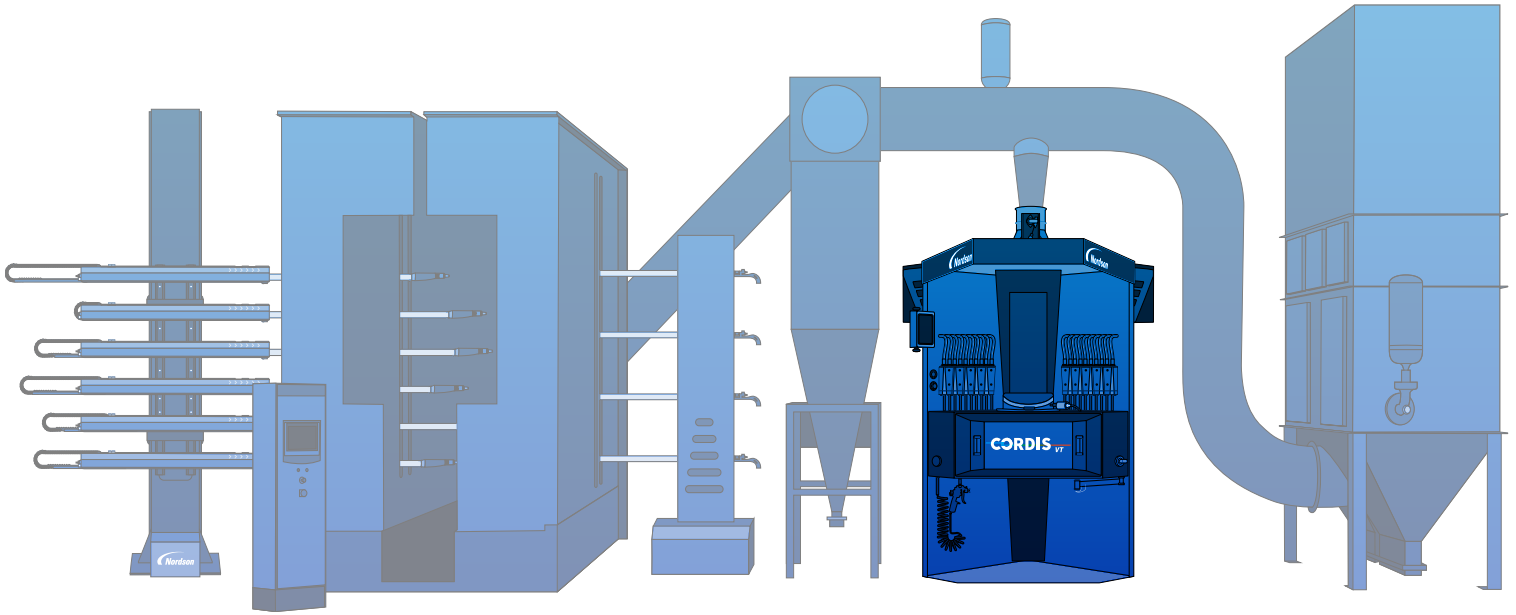
FEED CENTER CONTROL FEATURES

- **Intuitive HMI Touchscreen Controller** - Provides user-friendly access to settings, diagnostics, and advanced features on a 7" touch screen.
- **Integrated Lighting** - Main lighting with built-in indicator LEDs for status visibility and workspace illumination.
- **Automatic Hopper Fill & Level Detection** - Uses VBF bulk feed and reclaimed powder to maintain consistent fill levels and performance.
- **User Logins with Permissions & Language Preferences** - Supports secure access, role-based controls, and multilingual operation.



- **Guided Color Change Procedure** - Step-by-step visual interface ensures proper execution and repeatable results.
- **Rapid and Contactless Color Changes** - Designed for powder coating operations requiring frequent color shifts.
- **Completely Isolated Storage** - The powder hopper is isolated, eliminating the risk of cross-contamination between batches.
- **Automatic Hopper Cleaning** - Bidirectional, alternating airflow combined with systematic purging thoroughly cleans hopper walls.

CORDIS™ VT: A New Standard in Powder Coating



- **Digitally Controlled Drain Valve** - Enables automated cleaning cycles and reduces manual intervention.
- **Patent-Pending Hopper Design** - Achieve perfect fluidization with lower compressed air consumption for high-quality finish on every part.
- **Selective Purge Technology** - Patent-pending valve cartridges direct airflow precisely during color changes and line clearances—streamlining maintenance and reducing downtime.
- **Feed Center Ventilation** - Actively captures airborne powder and vents the hopper, promoting a cleaner environment and enhancing operator safety.



TECHNICAL SPECIFICATIONS

Weight: 850 lb / 385.5 kg

Dimensions (L × W × H): 41.88 in × 55.97 in × 90.63 in
1063.6 mm × 1421.7 mm × 2302 mm

Pump Capacity: 9 pumps (supports up to 18 applicator guns)

Hopper Powder Capacity: 20 lb / 9 kg

Required Air Flow: 88 CFM


© 2026 Nordson Corporation | All Rights Reserved | PWL- 25-5827 | Issued 04/26

Nordson Industrial Coating Systems

100 Nordson Drive
Amherst, OH 44001
USA

Phone: 1 (800) 433-9319
www.nordson.com/ics

 /NordsonICS

 /company/nordson-industrial-coating-systems

Find your local Nordson office:
www.nordson.com/icslocations

Performance by design



