

# TruFlow™ Flex

Flow Controllers

Economical, easy-to-use monitoring and closed-loop control of material delivery for enhanced product quality.



Flow rate monitoring is the ability to measure per product and improve material delivery and dispensing during all production phases. This allows manufacturers to reduce waste, boost product quality, and enhance production efficiency.

TruFlow Flex flow controllers enable flow monitoring and control for the installed base of material delivery systems when used with a Nordson TruFlow meter. These flow controllers support closed-loop flow control for continuous applications. When operated in control mode, the TruFlow Flow flex controllers measure actual material delivery compared to the requirement and continuously adjust pumps in real-time; thus, vastly improving material delivery accuracy.

The user interface offers a color LCD touch-screen for intuitive control and visibility of the system status at a glance. Additionally, the touch-screen interface provides data logging and on-screen graphing capabilities.

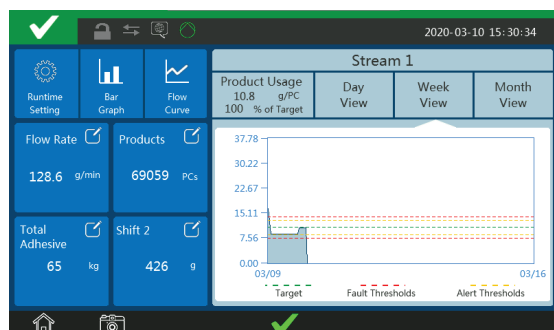
TruFlow Flex flow controllers also provide heating channels to support the additional TruFlow equipment and hoses.

## Features

- Integrated or remote control panel
- System status at a glance
- Data export with USB or host communication
- Customizable process control parameters

## Benefits

- Accurately monitor or control up to two flow channels in real-time
- Intuitive touch-screen interface simplifies set-up and operation
- Data logging and graphing improve operational control
- Easily integrates with existing systems

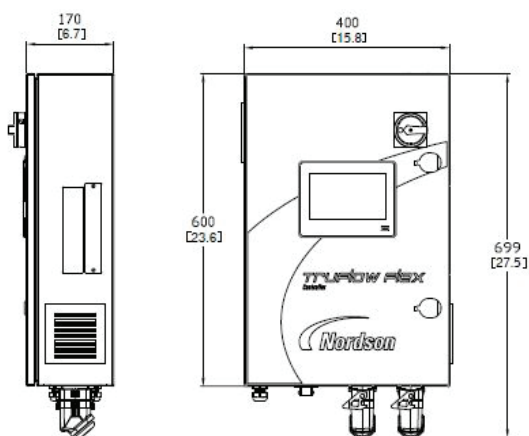


*Touch-screen interface on-screen graphing*

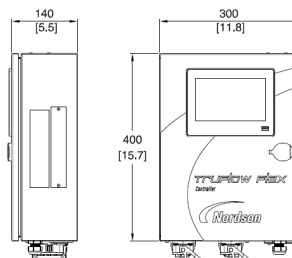


## Specifications

Control modes	Monitoring, Closed loop (Continuous applications only)
Number of flow channels	2
Product trigger inputs	2
Flow control outputs	0-10 VDC, 4-20mA
Ambient temperature range	0° to 50° C (32° to 120° F)
Operating temperature range	40° to 230° C (100° to 446° F)
Temperature control stability	± 1° C (2° F)
Temperature control sensor options	Nickel 120 Ohm RTD, Platinum 100 Ohm RTD
Input/output capability	4 inputs/3 outputs
Ingress protection rating	IP54
Electrical requirements	200/240 VAC 50/60 Hz single-phase
Number of heating zones	0, 2 or 4
Maximum heating capacity	2800 watts
Channel 1	1200 watts per channel/600 watts per zone
Channel 2	1600 watts per channel/800 watts per zone
Weight	20 kg (with heating channels), 9.5 kg (without heating channels)



TruFlow Flex with Heating Channels



TruFlow Flex without Heating Channels

# TruFlow Flex Flow Controllers

## TruFlow Meters

Displacement	Flow Range*
1.8 cc/rev	0.5 cc/min to 4 liters/min
4.2 cc/rev	10 cc/min to 15 liters/min
13.5 cc/rev	25 cc/min to 45 liters/min
38 cc/rev	75 cc/min to 105 liters/min
133 cc/rev	250 cc/min to 240 liters/min

\*Application and adhesive dependent



TruFlow meters

## Controller Options



TruFlow Flex remote mounted flow controller



TruFlow Flex OEM controller with display

For more information, speak with your Nordson representative or contact your Nordson regional office.

### United States

Duluth, Georgia  
(800) 683-2314 **Phone**  
(866) 667-3329 **Fax**

### Canada

Markham, Ontario  
(800) 463-3200 **Phone**  
(905) 475-8821 **Fax**

### Europe

Erkrath, Germany  
(49) 211-9205-0 **Phone**  
(49) 211-254658 **Fax**

### Japan

Tokyo, Japan  
(81) 3-5762-2710 **Phone**  
(81) 3-5762-2717 **Fax**

### Asia/Australia/ Latin America

Amherst, Ohio  
(440) 985-4797 **Phone**  
(440) 985-1096 **Fax**

### Find us on:



Issued 10/20  
© 2020 Nordson Corporation  
All Rights Reserved.  
Printed in U.S.A.  
Nordson reserves the right to make design changes between printings.