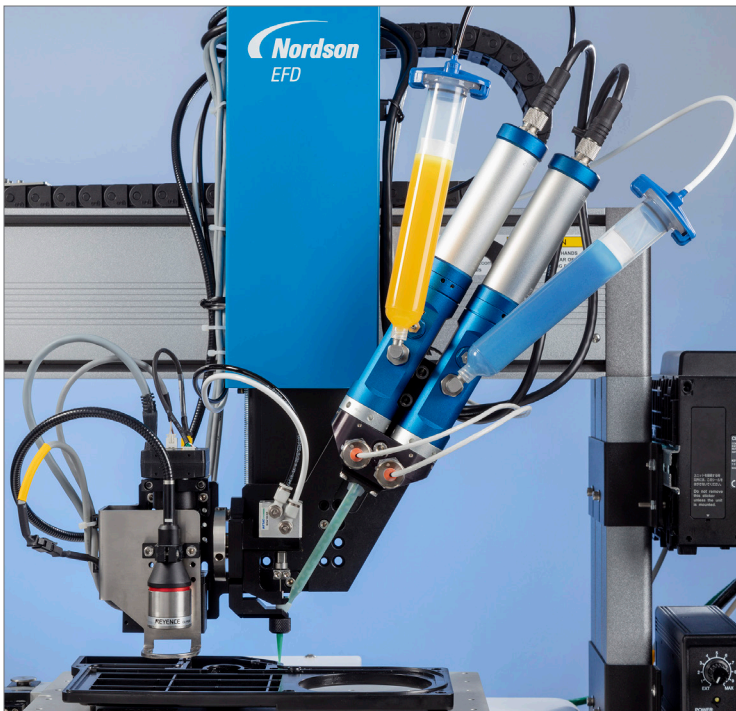
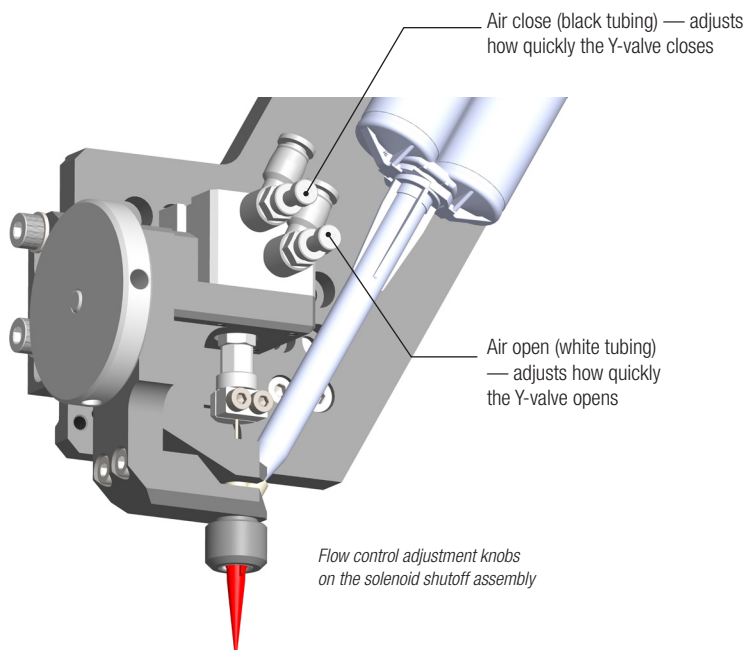


# 797PCP-2K Shutoff Bracket Assembly

Eliminates Drooling, Dripping, and Leaking



Nordson EFD shutoff bracket technology eliminates leaking, drooling, and dripping at the dispensing tip.



Dispense two-component (2K) adhesives and sealants with confidence because the Nordson EFD 797PCP-2K shutoff bracket technology eliminates leaking, drooling, and dripping at the outlet of 797PCP-2K progressive cavity pumps. Manufacturers can reduce 2K production waste, lower manufacturing costs, decrease production time, and improve quality — putting an end to long set times or stringing challenges.

The shutoff bracket assembly offers seamless compatibility with Nordson EFD automated fluid dispensing solutions. The system operates with the E Series (E3 — E5 only), EV Series (E3V — E6V only), and all PROX / PROPlus / PRO Series, and GVPlus / GV Series robots.

The 797PCP-2K shutoff bracket adds value to your manufacturing line, delivering a rapid return on investment with improved production efficiency and waste reduction.

## Features

- Includes bracket, control box, regulator, cables, tubing, Y-valves, fittings, and hardware
- Securely attaches to your automated dispensing system and 797PCP-2K pumps

## Benefits

- Eliminates drooling, leaking, and dripping at the outlet of your progressive cavity pump
- Offers rapid return on investment, improving production efficiency and reducing waste
- Easily integrates with the 797PCP-2K progressive cavity pump
- Dispensing tips deliver precise, consistent deposits and ensure drip-free dispensing

Part #	Description
7365000	Shutoff bracket assembly for 797PCP-2K pumps (pumps not included)

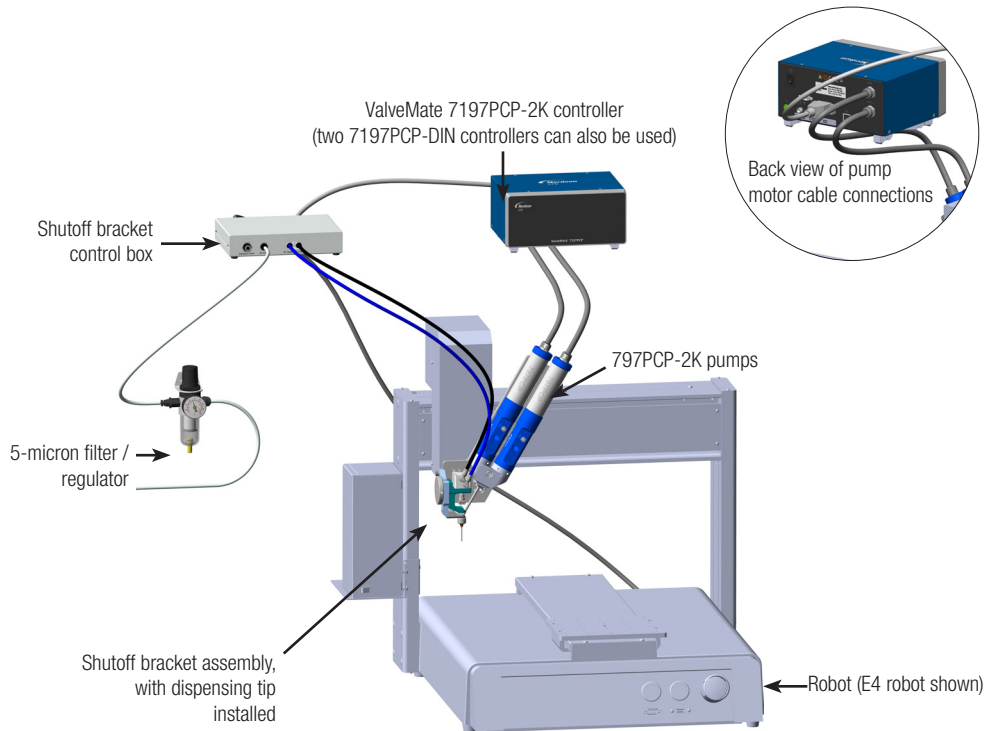


more info



## Specifications

Item	Specification
Shutoff valve dimensions	28.68 <sub>H</sub> x 22.08 <sub>w</sub> x 8.66 <sub>D</sub> cm (11.3 <sub>H</sub> x 8.7 <sub>w</sub> x 3.4 <sub>D</sub> " With mixer, add to height: 16.0 <sub>L</sub> cm (6.0 <sub>L</sub> " With 12.7 mm (0.50") dispensing tip, add to height: 4.05 <sub>L</sub> cm (1.6 <sub>L</sub> "
Shutoff bracket control box dimensions	4.3 <sub>H</sub> x 20.0 <sub>w</sub> x 17.0 <sub>D</sub> cm (1.7 <sub>H</sub> x 7.9 <sub>w</sub> x 6.7 <sub>D</sub> "
Weight	1.75 kg (3.9 lb)
Output voltage from robot I/O Port	24 VDC
7197PCP controller connection	DB15 cables (2)
Air Inlet (to pressure regulator)	6.0 mm
Input air pressure	2.8–3.1 bar (40–45 psi)



## Automated Dispensing Systems

Nordson EFD automated dispensing systems deliver market-leading repeatability and accuracy in fluid placement and positioning. Specialized dispensing software simplifies setup and programming. Optimize dispensing results with features such as laser height sensing and smart vision CCD cameras.

## Request a Process Evaluation

Contact Nordson EFD to configure a precision dispense system that meets your specific needs, with:

- A complimentary process evaluation by experienced fluid dispensing experts
- Samples processed for customer evaluation and approval prior to purchase



For Nordson EFD sales and service in over 40 countries, contact Nordson EFD or go to [www.nordsonefd.com](http://www.nordsonefd.com).

### Global

800-556-3484; +1-401-431-7000  
info@nordsonefd.com

### Europe

00800 7001 7001  
infoefd.europe@nordsonefd.com

### Asia

China: +86 (21) 3866 9006; china@nordsonefd.com  
India: +91 80 4021 3600; india@nordsonefd.com  
Japan: +81 03 5762 2760; japan@nordsonefd.com  
Korea: +82-31-736-8321; korea@nordsonefd.com  
SEAsia: +65 6796 9522; sin-mal@nordsonefd.com