

BKG® HyFlex™ Start-Up Valves

Function

- Shut-off position (optional): The melt flow is blocked
- Start-up position: The material is discharged out of the process
- Production position: The melt flow is guided to the die plate

Process

Underwater pelletizing

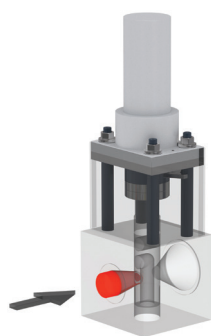
Features

- Designed to match the cone design of a die plate for a pelletizer in order to optimize the flow and minimize melt residence time
- Optimized flow channels utilizing rheological data
- Wear-free metallic sealing system - no additional sealing required
- Easily integrated into the line controls
- Highly customized solutions available
- Proven piston type design

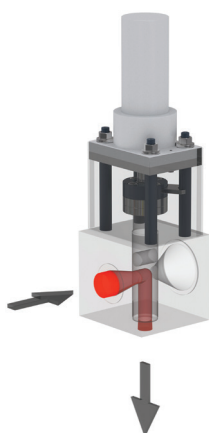
Benefits

- Automated and simple start-up
- Full melt flow directly at start-up
- Easy flushing of the die plate before startup
- Safe discharge of contaminated material
- Fast separation of the process in case of a failure
- Short residence time of the melt
- Quick removal and exchange of die plates

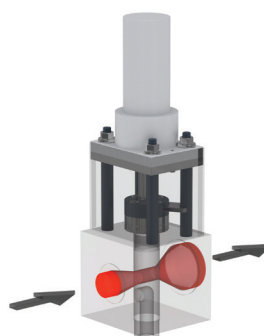
Functional principal



**Shut-off position
(optional)**



Start-up position



Production position



Nordson BKG GmbH
Hessenweg 3-5
48157 Münster / Germany
Phone +49.251.26501.0

USA
Phone +1.828.326.9888

China
Phone +86.21.5785.091.8

Japan
Phone +81.3.5762.2770



nordsonpolymerprocessing.com | info@nordsonpolymerprocessing.com

© 2021 Nordson BKG GmbH
Printed in USA
04/2021

BKG is a trademark of Nordson Corporation,
registered in the United States and other countries.