

BKG® HyFlex™ Shut-Off Valves

Function

Shut-off position:	An interruption of the melt flow is caused
Production position:	The melt flow is guided to the down stream components

Processes

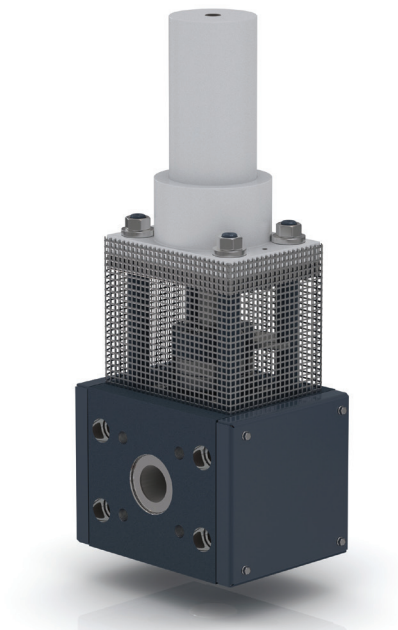
Multi-layer film lines and reactor processes

Features

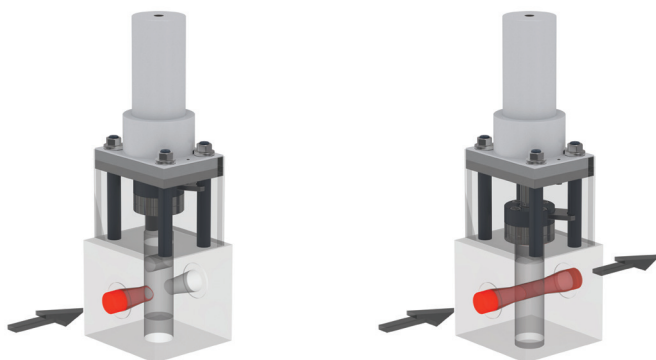
- Optimized flow channels utilizing rheological data
- Wear-free metallic sealing system - no additional seal required
- Easily integrated into the line controls
- Highly customized solutions available
- Proven piston type design

Benefits

Controlled shut-off of the melt flow during maintenance, product interruptions or other events that require the flow to be shut-off



Functional principal



Shut-off position

Production position

Nordson BKG GmbH
Hessenweg 3-5
48157 Münster / Germany
Phone +49.251.26501.0

USA
Phone +1.828.326.9888

China
Phone +86.21.5785.091.8

Japan
Phone +81.3.5762.2770



nordsonpolymerprocessing.com | info@nordsonpolymerprocessing.com

BKG is a trademark of Nordson Corporation,
registered in the United States and other countries.

© 2021 Nordson BKG GmbH
Printed in USA
04/2021