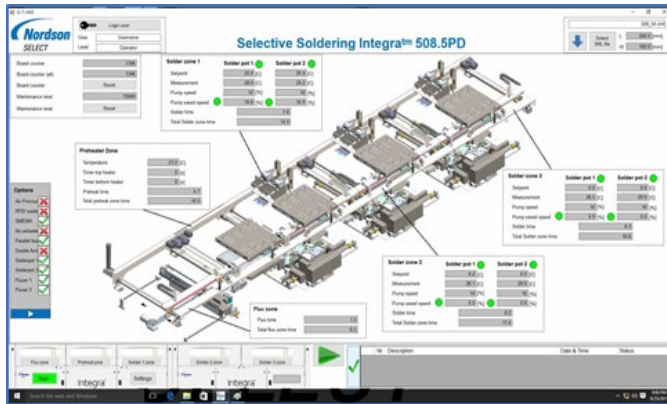


# PhotoScan Software

Point-and-Click Programming with Highly Editable Program Monitoring

## Features and Benefits

- Easy “point-and-click” program generate with highly editable graphical monitoring of entire soldering process
- Fully network compatible with remote machine control and remote maintenance
- Factory information system (FIS) capability and direct linkage to customer’s FIS for ultimate in traceability
- Production data and quality reporting to customer’s internal SQL database
- Compatible with Novo® 300, 300SD, 460, Cerno® 300S, 508.1, Integra® 508.2, 508.3, 508.4 and 508.5 models



PhotoScan software's user-friendly interface

**Overview.** PhotoScan software provides easy “point-and-click” programming with highly editable graphical monitoring of programs throughout the selective soldering process. All machine parameters are accessible through a single graphical user interface for both programming and machine operations. This software is fully network compatible through either cable or wi-fi, providing backup capabilities for programs and project storage. Our highly functional control system allows that all parameters of each soldering and flux location can be easily adjusted to obtain optimal soldering performance.



PhotoScan graphics-based programming software

**Integrated Solution.** The Nordson SELECT PhotoScan Software fully integrates with all closed-loop process controls providing seamless operation for your entire selective soldering process. Nordson SELECT’s closed-loop process controls enable successful results for a full range of soldering applications and ensures stable and repeatable results for high-yield production.

**Experience.** With over a decade of selective soldering experience and more than a thousand systems currently in production, Nordson SELECT is committed to providing innovative solutions for all selective soldering needs. Our global support network, including state-of-the-art application development labs, provides customers with world-class know-how and application expertise.

## Standard Features

PhotoScan equipped machines have an extensive feature set of unique software capabilities including:

- Integrated board scanning creates true-to-scale image of entire board]
- Automatic fiducial alignment with single click fiducial teach capability
- Remote machine control and remote machine maintenance
- Full connectivity to customer's company network
- Factory information system (FIS) capability
- Production data and quality reporting to customer's SQL database
- Direct linkage to FIS system for ultimate in traceability

Compatible with Novo® 300, 300SD, 460, Cerno® 300S, 508.1, Integra® 508.2, 508.3, 508.4 and 508.5 models

**For more information  
speak with your local sales  
rep or contact your regional  
office.**

[nordsonselect.com](http://nordsonselect.com)

### Europe

Hagenbach, Germany  
+49.7273.949466.0 **Phone**  
[sales.eu@nordsonselect.com](mailto:sales.eu@nordsonselect.com)  
Nordson SELECT GmbH  
Perläckerstraße 11  
76767 Hagenbach

Maastricht, Netherlands  
+31.43.352.4466 **Phone**  
[info.eu@nordsonselect.com](mailto:info.eu@nordsonselect.com)

### North America

Headquarters  
Liberty Lake, WA, USA  
+1.509.924.4898 **Phone**  
[sales.usa@nordsonselect.com](mailto:sales.usa@nordsonselect.com)

### China

[info.cn@nordsonselect.com](mailto:info.cn@nordsonselect.com)

Shanghai  
+86.21.3866.9166 **Phone**

Beijing  
+86.10.8453.6388 **Phone**

Guangzhou  
+86.20.8554.9996 **Phone**

### Japan

Tokyo  
+81.3.5639.7020 **Phone**  
[Info.japan@nordsonselect.com](mailto:Info.japan@nordsonselect.com)

### Korea

Seoul  
+82.31.765.8337 **Phone**  
[info.kr@nordsonselect.com](mailto:info.kr@nordsonselect.com)

### India

Chennai  
+91.44.4353.9024 **Phone**  
[info.in@nordsonselect.com](mailto:info.in@nordsonselect.com)

### S.E Asia/Australia

Singapore  
+65.6796.9514 **Phone**  
[info.sg@nordsonselect.com](mailto:info.sg@nordsonselect.com)

### Taiwan

+886.229.02.1860 **Phone**  
[info.sg@nordsonselect.com](mailto:info.sg@nordsonselect.com)