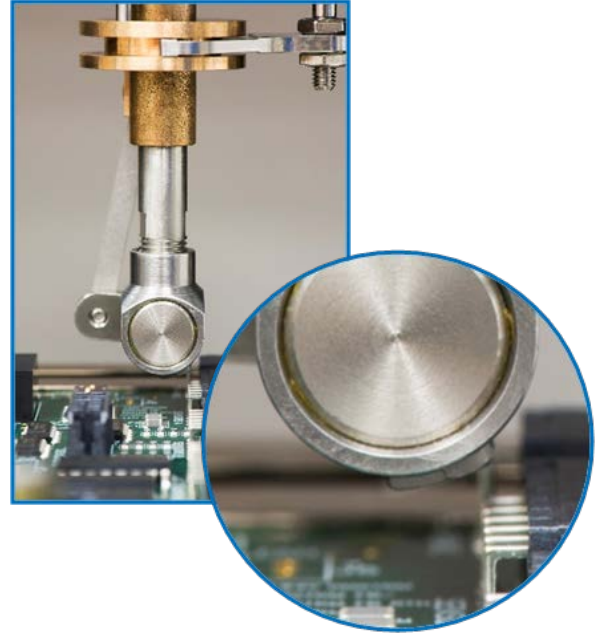
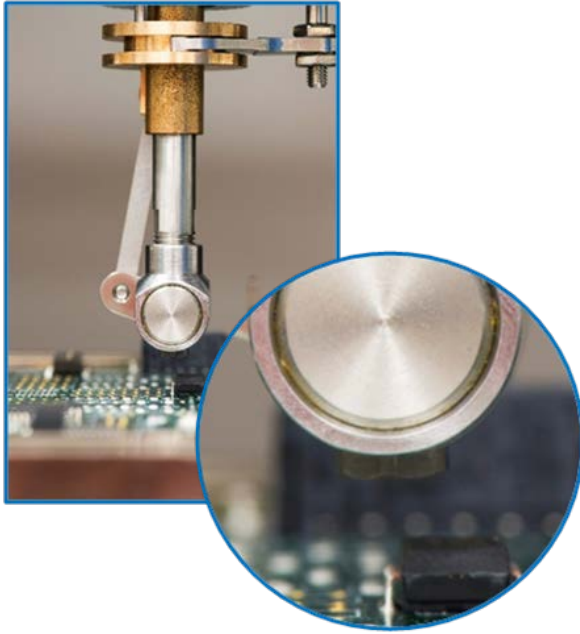


Fifth-Axis Tilt Accessory

Enhances Conformal Coating Access



The Nordson ASYMTEK Fifth-Axis Tilt accessory together with the Four-Position Rotate provides film coater applicators greater flexibility and increased access while conformal coating a printed circuit board (PCB).

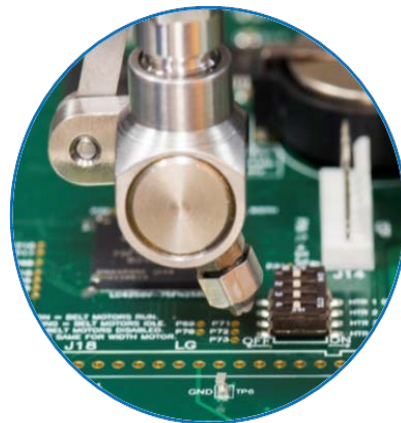
Fifth-Axis Tilt allows the film coater nozzle to be rotated and tilted to access hard-to-reach areas of the product. It is ideal for coating vertical surfaces and underneath components.

When the nozzle is orientated perpendicular to the product, a fan pattern can be applied at a 30 degree angle using the tilt capability. With the nozzle mounted parallel to the product, a thin line of conformal coating can be applied at a 30 degree angle into narrow openings with high accuracy.

Programmers can easily set and modify the rotate and tilt parameters for an applicator within the Easy Coat® software.

- Nozzle can be tilted from 0 to 30 degrees and rotated 0 to 270 degrees to reach all four sides of a component
- Retrofittable for existing Select Coat® SL-940 conformal coating systems
- Compatible with SC-104/105, SC-204/205, and SC-280N/280C Film Coater applicators

The tilt and rotate accessory uses dual pneumatic motors, which provide smooth, fast and quiet rotate action. The single action rotate speed is variable using flow controls.



Fifth-Axis Tilt Accessory Specifications

Tilt Positions: 0°, 30°
Rotate Positions: 0°, 90°, 180°, 270°
Rotate Speed: ~0.3 sec.
Control: Easy Coat® software
Weight: 0.9Kg (2.0 lbs.)
Nozzle End Footprint: 27 x 23mm (1.1 x 0.9 in.)

Dispense Area:

		X-axis - mm (in.)	Y-axis - mm (in.)
Standard		500 (19.7)	440 (17.3)
With tilt mode engaged (Approaching from the outside into each of the four sides of a PWA)	Without nozzle ext. (-2mm per side)	496 (19.5)	436 (17.2)
	With 13mm nozzle ext. (-6.5mm per side)	487 (19.2)	423 (16.7)
	With 25mm nozzle ext. (-12.5mm per side)	475 (18.7)	411 (16.2)
NO CAMERA ALLOWANCE			



Fifth-Axis Tilt for the SC-280

Nordson ASYMTEK
+1.760.431.1919
2747 Loker Avenue West
Carlsbad, CA USA 92010-6603

Published 2018-03-26 (Updated)

**For more information,
visit our website to
locate your local
representative or
contact your regional
office:**

nordsonasymtek.com
info@nordsonasymtek.com

North America

Headquarters
Carlsbad, CA

China

Shanghai
Beijing
Guangzhou
Taipei

EMEA

Deurne, Netherlands

S.E. Asia/Australia

Singapore

Korea

Seoul

Japan

Tokyo

India

Chennai